

AGENCY NAME:	South Carolina Commission on Higher Education		
AGENCY CODE:	H03	SECTION:	011



Fiscal Year 2014-15 Accountability Report

SUBMISSION FORM

AGENCY MISSION	<p>MISSION: <i>The South Carolina Commission on Higher Education (CHE) will promote quality and efficiency in the state system of higher education with the goal of fostering economic growth and human development in South Carolina.</i></p> <p>VALUES: CHE values</p> <ul style="list-style-type: none"> • the importance of quality higher education • the accessibility of this education to the citizens of the state • the accountability of the institutions to their students and the General Assembly • excellence on the part of its staff in performing its functions <p>excellence on the part of the institutions in providing educational opportunities</p>
-----------------------	--

Please identify your agency's preferred contacts for this year's accountability report.

	<u>Name</u>	<u>Phone</u>	<u>Email</u>
PRIMARY CONTACT:	Julie Carullo	803-737-2292	jcarullo@che.sc.gov
SECONDARY CONTACT:	Argentini Anderson	803-737-2276	aanderson@che.sc.gov

I have reviewed and approved the enclosed FY 2014-15 Accountability Report, which is complete and accurate to the extent of my knowledge.

AGENCY DIRECTOR (SIGN/DATE):	
(TYPE/PRINT NAME):	Gary S. Glenn, Interim Executive Director
BOARD/CMSN CHAIR (SIGN/DATE):	
(TYPE/PRINT NAME):	Mr. Tim M. Hofferth, Chair

AGENCY NAME:	South Carolina Commission on Higher Education		
AGENCY CODE:	H03	SECTION:	011

AGENCY’S DISCUSSION AND ANALYSIS

The South Carolina Commission on Higher Education (CHE), established in 1967, serves as the coordinating board for SC’s 33 public institutions of higher learning. It acts both as an oversight entity on behalf of the General Assembly and an advocate for higher education. The Commission is responsible for assuring a balance between student and taxpayer interests and institutional policies, aspirations, and needs. Our offices are located in Columbia, SC, at 1122 Lady Street, Suite 300, and CHE’s website is www.che.sc.gov.

CHE carries out its mission through statewide planning and approval authority to promote quality, access, and efficiency in the state’s higher education enterprise, while balancing stewardship, accountability, and advocacy. The major functions of CHE can be categorized broadly into four major areas: coordination and planning; research and information services; accountability and reporting; and program administration. In performing its responsibilities, CHE works closely with institutions to expand educational opportunities for all of the state’s citizens, to invest in research for economic development and a better quality of life, and to increase cooperation and collaboration for higher levels of efficiency and quality in higher education opportunities throughout the state.

CHE operates pursuant to the SC Code of Laws, as amended, §59-103-5, *et seq.*, and is governed by a board of 15 members who are appointed by the Governor pursuant to §59-103-10 including: one statewide at-large member appointed as chair; three other statewide at-large members; seven members, one from each of the state’s seven Congressional Districts; three members, college and university trustees representing the public sectors of higher learning which include research institutions, four-year comprehensive teaching institutions, and technical colleges; and one member, a president of an independent college representing the independent higher learning institutions. Appointees representing Congressional Districts are appointed by the Governor upon recommendation of a majority of the State Senators and House members comprising the District’s legislative delegation. The remaining appointees are recommended and appointed based on the advice and consent of the Senate. Commissioners serve four-year terms with the exception of the institutional representatives who serve two-year terms. All except the independent institution representative are voting members.

In brief, CHE provides statewide policy direction, management, and oversight of the state’s higher education enterprise. In carrying out its responsibilities, CHE

- Oversees academic program quality including approval of academic programs at public institutions and licensing of non-public institutions that operate in SC;
- Maintains funding system and data/accountability systems essential for understanding performance and productivity that serve as the source of required state and national data;
- Approves all public higher education capital projects, leases, and land purchases, and collects and reports building data to help determine state capital priorities and maintenance needs;
- Provides administrative oversight and coordination of student financial aid to provide statewide equity of awards and consistency of selection criteria;
- Supports increased access to and success in higher education, improving the transition from K-12 to higher education, ensuring effective transfer and articulation, promoting programs that are responsive to adult learners, veterans, and other non-traditional students; and
- Supports increased public awareness of the importance of higher education to help all South Carolinians earn a certificate or diploma that prepares them to be successful, productive citizens in a changing global environment.

AGENCY NAME:	South Carolina Commission on Higher Education		
AGENCY CODE:	H03	SECTION:	011

CHE conducts its business through the work of standing committees of the board (the Commission) organized along the functional lines of CHE’s responsibilities. The standing committees include the Committee on Academic Affairs and Licensing (CAAL), Finance and Facilities, Student Services and Access and Equity, and Governmental and Administrative Affairs. CHE’s chair, vice chair, and committee chairs make up the Executive Committee of CHE. The standing committees bring recommendations forward to the full CHE for consideration. The work of these committees is supported by CHE staff who are assisted and informed by various advisory committees made up of institutional representatives. The full Commission meets regularly throughout the year, typically on the first Thursday of the month. During the year, CHE strives to hold one or two of the business meetings offsite at an institution. The meeting schedule of the Commission, as well as those of the standing committees, are posted online, and meeting agendas and materials are typically posted one week in advance of meetings.

An Executive Director oversees daily operations of CHE and its supporting staff. CHE staff is organized in divisions (Academic Affairs, Student Affairs, Fiscal Affairs, and External Affairs) that provide support for the committees. Work of the divisions is also informed on a regular basis by formal and informal advisory committees comprised of institutional representatives and other appropriate stakeholders. The Executive Director and division directors make up the staff’s Executive Leadership Team. CHE continues to serve as the fiscal agent for PASCAL and also provides staff support, as required by statute, for the SmartState® (the Research Centers of Economic Excellence) Program Review Board.

CHE experienced a number of changes in leadership at the Commission and staff levels during FY 2014-15. In spring 2015, the Commission welcomed six new commissioners. The new appointments included: Mr. Paul O. Batson, an area commissioner of Greenville Technical College, who was appointed as the representative of the public technical college system; Mr. Tim M. Hofferth who was appointed as a statewide at-large member; Ms. Allison Dean Love, a trustee of The Citadel, who was appointed as the representative of the public 4-year comprehensive teaching universities; Dr. Louis B. Lynn, a trustee of Clemson University, who was appointed as the representative of the public research institutions; Mr. Clark B. Parker who was appointed as a statewide at-large member; and Dr. Evans P. Whitaker, president of Anderson University, who was appointed as the representative of the independent colleges and universities. Dr. Jennifer Settlemeyer, who serves as a statewide at-large member, was reappointed to a second term. As of the end of FY 2014-15, 14 of the 15 board seats are filled with the seventh Congressional District seat not yet named. While outside of the timeframe of this report, it is noted that CHE Chair Brig. General John Finan, USAF (Ret), announced his resignation from the Commission on September 3, 2015. Governor Haley announced on September 15, 2015, the appointment of Mr. Tim Hofferth to fill the position of chair. Mr. Hofferth has been serving on the Commission since his confirmation as a statewide at-large member in March 2015, and the seat he formerly held is now vacant.

In late spring 2015, two members of CHE’s executive leadership team resigned. The agency’s executive director, Dr. Richard Sutton, vacated his position after two-years effective April 2, 2015, and in May 2015, Dr. MaryAnn Janosik, the Director of Academic Affairs vacated her position after one-and-a half years. CHE Staff Ms. Julie Carullo and Dr. John Lane were tasked with serving as interim executive director and director of Academic Affairs, respectively. The Commission organized a search committee of Commission members and outside advisory members, chaired by Commissioner Allison Dean Love, in order to strategically and expeditiously begin the search for a new executive director. As of the end of FY 2014-15, the work of the Executive Director Search Committee continued. In August 2015, Ms. Carullo announced her desire to step down as interim executive director, and the Commission appointed Mr. Gary Glenn, Director of Fiscal Affairs, on September 3 to serve as interim until the permanent director is selected. Information about the Executive Director Search committee is available at <http://www.che.sc.gov/ExecutiveDirectorSearch2015.aspx>.

AGENCY NAME:	South Carolina Commission on Higher Education		
AGENCY CODE:	H03	SECTION:	011

CHE engaged in renewed strategic planning in the prior year, FY 2013-14. In fall 2014, the Commissioners reviewed and affirmed strategic priorities which included focus on 1) strengthening academic program monitoring, assessment, planning, 2) developing new higher education funding models/accountability based funding, 3) improving P-20 collaboration, and 4) improving monitoring of non-public education providers. See attached Template D for an outline of the strategic agenda.

Throughout the year, the agency mobilized to support the identified priorities and develop strategies to allow CHE to address the priorities. The Executive Director provided progress reports at monthly Commission meetings during FY 2014-15. Work continued in FY 2014-15 to integrate fully within budgetary constraints the Executive Director’s plan for restructuring the agency staffing organization to provide for a greater alignment of functions to strategic priorities, improve alignment of talents and skill sets, and better distribute authority and workload.

The strategic goal template provided with this report reflects the identified goals and objectives as a result of strategic planning discussions of the Commission in summer 2014 that largely affirmed strategic priorities previously identified at the beginning of FY 2013-14. Work on the identified priorities carried out through CHE’s staff and committee process continued during FY 2014-15. However, specific metrics have not yet been identified as noted in the attached template for performance measures and strategic planning. It is expected that during FY 2015-16, upon the hiring of a new executive director, refinement of strategies and objectives and development of related performance metrics will be pursued. A description of key activities during FY 2014-15 with respect to the plan as outlined in the aforementioned four areas follows, and references to goal, strategy, and objective as delineated in Template D are provided.

CHE also worked during the year to provide for the efficient and effective management of programs under its purview. Programs managed by CHE in FY 2014-15, as well as those programs for which funds pass through CHE to other higher education entities, are described briefly in the attached program Template B. This template includes all programs funded as of FY 2014-15. Select data are provided on many of the programs in the performance measurement Template C.

Strengthening academic program monitoring, assessment, planning

CHE staff, through the Advisory Committee on Academic Programs (ACAP) and the Committee on Academic Affairs and Licensing (CAAL), worked to clarify data measures for program approval and re-assess the academic program approval process to recommend changes to strengthen and streamline the approval process for public institutions. These recommendations advanced by CAAL were approved by the Commission in October 2014. (1.1.1, 1.1.2)

Efforts in FY 2014-15 continued to focus on improving academic degree program monitoring. By year-end, recommendations relating to program productivity and program monitoring for public colleges and universities were developed and sent through CAAL, reaching CHE in September 2015. Recommendations to improve the biennial productivity review advanced by CAAL and approved by CHE in September 2015 include: increasing the “satisfactory” threshold for program completers for baccalaureate degree programs from five to eight (the threshold remains unchanged for master’s, first professional, specialist, and doctoral degree programs); changing the criterion for satisfactory program productivity from meeting either enrollment or completion thresholds to the new standard of meeting *both* enrollment and completion benchmarks for all programs; considering specialized accreditation status of applicable programs that do not meet the enrollment or completion thresholds when determining whether the programs are granted an exemption, placed on

AGENCY NAME:	South Carolina Commission on Higher Education		
AGENCY CODE:	H03	SECTION:	011

probation, or recommended for termination; and adding the monitoring of licensure and/or certification pass rates for applicable programs (e.g. nursing, education, engineering, etc.). Additionally, efforts begun in FY 2013-14 continue in reviewing statutory and regulatory changes needed to improve the monitoring and planning process. (1.1.1, 1.1.2)

CHE requested the re-establishment of funding for the Governor’s Professor of the Year program. The request was not supported. The program was not held in 2014-15 and will be revisited in the upcoming year. (1.1.3)

CHE made efforts to re-establish its audit program for state student aid programs. CHE requested funding for FY 2015-16, which was supported, for an audit position and will re-establish its on-site review process as a result in the upcoming year. CHE also requested that institutions assist in the audit process in the interim by including in their institutional audit processes specific reporting on state scholarships and grants. (1.1.5)

CHE staff also placed increased emphasis on data security and actively engaged in state activities and requirements of agencies to assess data security needs. CHE continues to move forward with implementing newly developed statewide security policies and will conduct a risk assessment of data security vulnerabilities in accordance with this work. (1.1.4)

Developing new higher education funding models/accountability based funding

In past years, CHE was supportive of bills advanced to revise the funding formula by developing an accountability-based funding system. The legislation was not enacted as of the end of the 2014 session and was not re-introduced or considered in 2015. CHE budget requests again supported the need for core funding targeted to providing incentives for programs to enhance student affordability and completion and also for routine funding for capital and maintenance needs. CHE’s initiative on affordability was not funded. The General Assembly included funding directed to public institutions’ specific capital projects and maintenance needs. Efforts initiated in the General Assembly to pass a bond bill during the session were not successful. (2.1.1, 2.1.2, 2.1.3, 2.1.4, 2.1.6)

CHE staff participated as required in the Higher Education Efficiency and Accountability Review Committee that had been established by proviso in FY 2014-15. Staff conducted the requisite survey of institutional reviews and efficiency studies and reported the findings to the committee. The committee did not pursue an independently funded study and appropriated funds were determined in the FY 2015-16 budget to be authorized for institutional expenditure on energy efficiency repair and related maintenance projects. (2.1.1)

In FY 2014-15, CHE continued to work with the institutions on implementation and provided year-round scholarship guidelines for institutions. After review of the process for awarding year-round scholarships in FY 2014-15, CHE will seek to permanently codify the allowance for year-round scholarship awards. In addition, staff began work to review regulations of South Carolina’s various scholarship and grant programs and residency for tuition and fee purposes. (2.2.1, 2.1.6)

Improving P-20 collaboration

As to the CHE strategic goal of improving P-20 collaboration, the Executive Director established regular meetings with the Superintendent of Education. CHE invited a member of the State Board of Education (SBE) to attend CHE board meetings, and in turn, a member of the Commission began attending meetings of SBE in addition to routine CHE staff presence at the SBE meetings. A staff vacancy at CHE in Academic Affairs was jointly selected by CHE and the State Department of Education; however, the position was later vacated during the year. (3.1.2)

AGENCY NAME:	South Carolina Commission on Higher Education		
AGENCY CODE:	H03	SECTION:	011

CHE worked during the year to establish a Council of P-20 Agency Heads which was accepted by all six agencies (CHE, State Department of Education, Education Oversight Committee, State Board of Technical & Comprehensive Education, Department of Commerce, and Department of Education and Workforce). The Council met twice in FY 2014-15. (3.1.1)

CHE also worked in collaboration with education partners in approving a new EIA-funded Center of Excellence to focus on college and career readiness. Funding requested for the new EIA-funded Center was supported by the Governor and approved by the General Assembly in the FY 2014-15 Appropriations Act. (3.1.3)

Improving monitoring of non-public education providers.

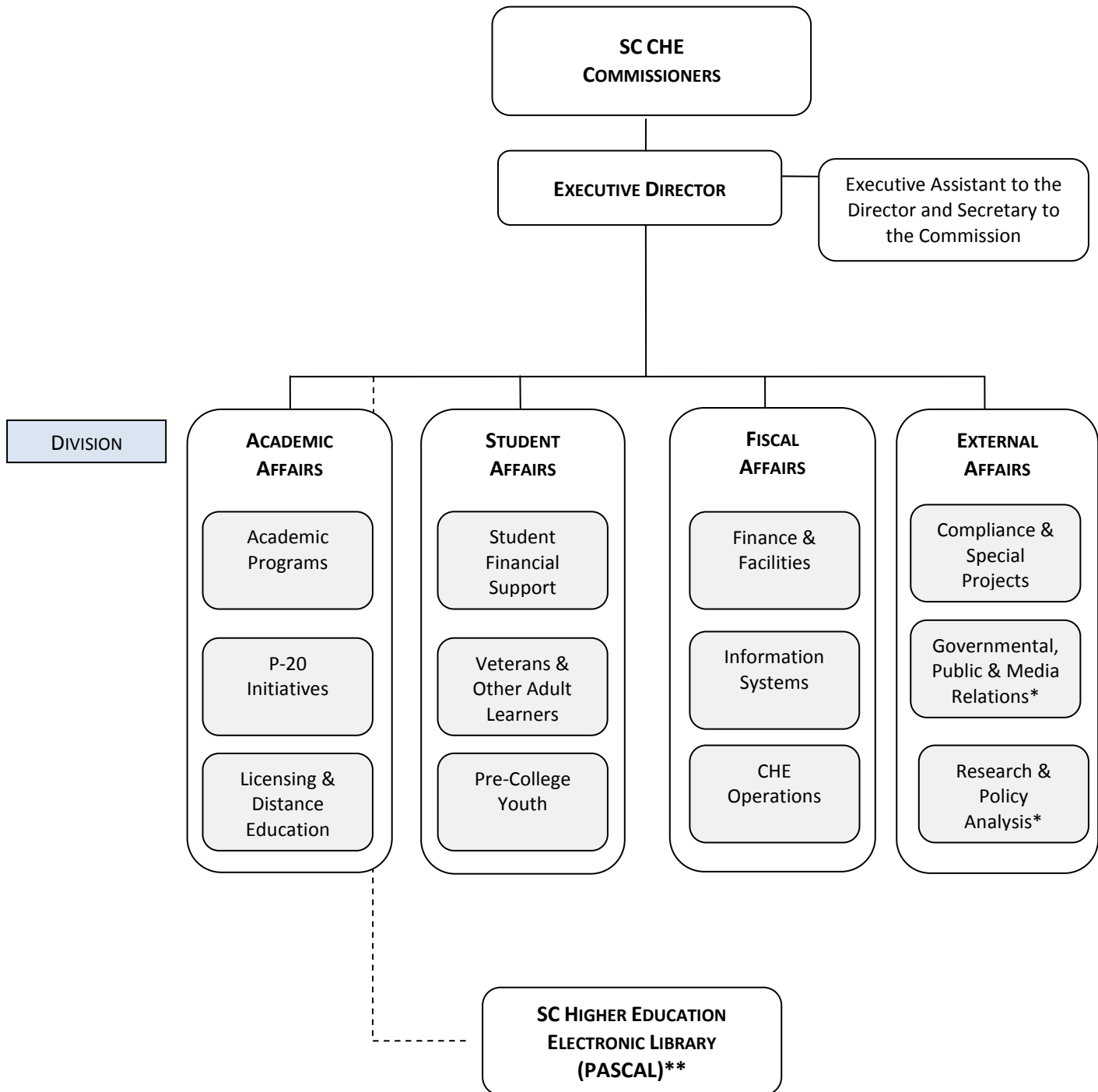
CHE continued work begun in FY 2013-14 to clarify data measures required for approval. Staff continues to research and draft statutory amendments to authorize CHE to establish assessment/outcome criteria and align legislative authority to the current education environment and best practices. The staff continued to monitor and review a nationwide-initiative for licensing reciprocity (State Authorization Reciprocity Agreement (SARA), which began in 2010. Currently, 29 states have been approved to participate. SARA is meant to reduce costs to institutions that offer distance learning and provide access to students who reside in other states. With the approval of the Commission, CHE staff will seek to join SARA as the state’s portal agency and work in concert with legal counsel to determine the necessary actions to do so. (1.2.1, 1.2.2)

CHE has endeavored to accomplish its mission in the face of diminished resources. A lack of incentive funds to bring together stakeholders to implement collaborative initiatives poses challenges in reaching mission goals. Budget cuts since the economic downturn at the end of FY 2007-08 have also taken their toll, leaving CHE with reductions nearing half of the previous staffing and funding levels. As would be expected, the reduced staffing levels are not ideal. With the reductions in available resources, CHE has and continues to look very critically at how functions are performed and for potential efficiencies.

In the upcoming year, CHE will continue to carry out mission critical responsibilities, to maximize statewide capacity in higher education, and to promote statewide programs to improve the affordability, quality, and effectiveness.

AGENCY NAME:	South Carolina Commission on Higher Education		
AGENCY CODE:	H03	SECTION:	011

SC COMMISSION ON HIGHER EDUCATION, STAFFING ORGANIZATION

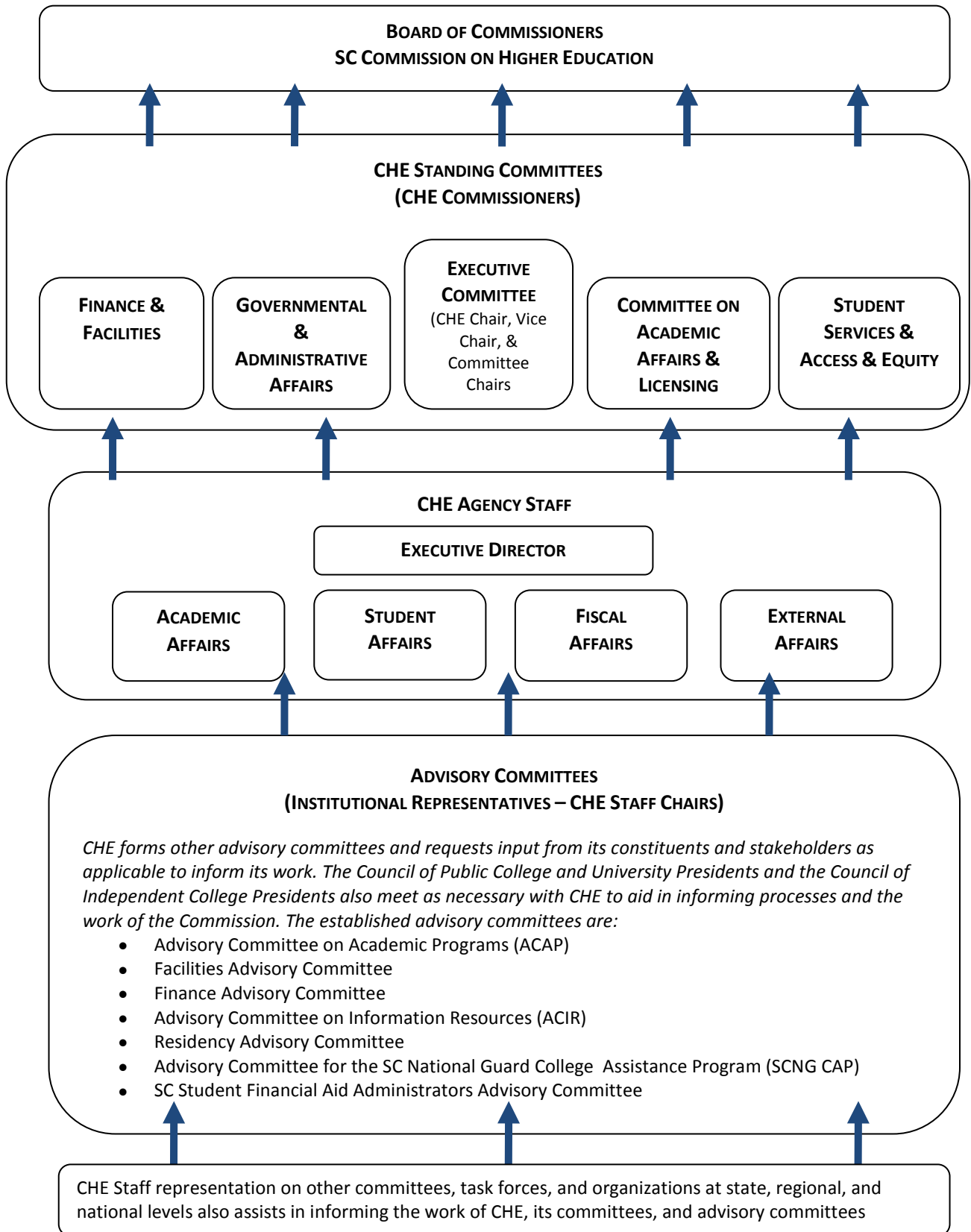


* Areas have not yet been staffed and consideration is in process.

**CHE serves as the fiscal agent for PASCAL, a consortium of institutional higher education academic libraries.

AGENCY NAME:	South Carolina Commission on Higher Education		
AGENCY CODE:	H03	SECTION:	011

SC COMMISSION ON HIGHER EDUCATION, COMMISSION AND COMMITTEE STRUCTURE



Agency Name: SC Commission on Higher Education

Agency Code: H03 Section: 011



Fiscal Year 2014-15
Accountability Report

Program Template

Program/Title	Purpose	FY 2013-14 Expenditures				FY 2014-15 Expenditures				Associated Objective(s)
		General	Other	Federal	TOTAL	General	Other	Federal	TOTAL	
1. Administration										
Administration	CHE's role is to promote access and provide pertinent information about higher education to interested constituents; Review and approve new degree program proposals and evaluate existing academic programs; Develop and present annual appropriation requests to the General Assembly; Administer state, regional, and federal programs affecting SC higher education; Maintain a statewide planning and institutional effectiveness system; Monitor access to and equality of higher education opportunities for minority groups; Examine and license non-public educational institutions; Collect data, conduct research and studies, and report recommendations regarding policies, roles, operations, and structure of SC's higher education institutions to the Governor and the General Assembly; Maintain the CHE Management Information System (CHEMIS); Establish polices and procedures for the transferability of courses at the undergraduate level between 2-year and 4-year institutions, remedial education, and admissions standards. (SC Code of Laws authorizing legislation 59-103-10 et seq. Regulations promulgated by the agency are included in Chapter 62 of the State Code of Regulations.)	\$ 1,705,837	\$ 207,739		\$ 1,913,576	\$ 1,698,423	\$ 236,645		\$ 1,935,068	1.1.1, 1.1.2, 1.1.3, 1.1.4, 1.1.5; 1.2.1, 1.2.2, 1.2.3, 1.2.4; 2.1.1, 2.1.2, 2.1.3, 2.1.4, 2.1.5, 2.1.6; 2.2.1, 2.2.2, 2.2.3, 2.2.4; 3.1.1, 3.1.2, 3.1.3, 3.1.4, 3.1.5, 3.1.6
<i>(Appropriations Act does not include Roman Numeral II)</i>					\$ -				\$ -	
III. Other Agencies & Entities - Special Items										
Greenville Technical College - University Center	The University Center of Greenville is a consortium of public and private colleges and universities offering degree programs to the citizens of the Upstate and surrounding areas. The program is described more fully below for the UCG Operations appropriation. UCG was originally located on the Greenville Technical College Campus and relocated to its current site when Greenville Technical College and the Greenville Tech Foundation purchased the neighboring McAlister Square Mall. State support for rent and operations flows through the CHE budget to UCG and Greenville Technical College.	\$ 594,390			\$ 594,390	\$ 594,390			\$ 594,390	Funds flow through to intended recipient. Related 2.2.1, 2.2.3, 3.1.6

Agency Name: SC Commission on Higher Education

Agency Code: H03 Section: 011



Fiscal Year 2014-15
Accountability Report

Program Template

Program/Title	Purpose	FY 2013-14 Expenditures				FY 2014-15 Expenditures				Associated Objective(s)
		General	Other	Federal	TOTAL	General	Other	Federal	TOTAL	
University Center of Greenville - Operations	The University Center of Greenville (UCG) consortium was established in 1987 to meet the need for 4-year public education in the Greenville Area. Institutions presently include: Clemson, SC State, USC Columbia, USC Upstate, Furman, Anderson, and Greenville Technica College. State support for rent and operations flows through CHE budget to UCG and Greenville Technical College. In the mid-1990s Clemson became the fiscal agent for UCG. UCG was developed to meet two challenges facing the surrounding Greenville metropolitan and county area - 1) provide a facility that gives access to public higher education for two-year colleges graduates who cannot leave Greenville County to pursue a four-year or graduate degree and 2) provide that same level of access to working professionals so that they are able to pursue Bachelor's, Master's and Doctoral degrees without having to disrupt their family lives and job responsibilities. UCG's website is www.ucgreenville.org .	\$ 1,284,899			\$ 1,284,899	\$ 1,084,899			\$ 1,084,899	Funds flow through to intended recipient. Related 2.2.1, 2.2.3, 3.1.6
Lowcountry Graduate Center	The Lowcountry Graduate Center (LGC) was created in 2001 by the College of Charleston, The Citadel, and the Medical University of South Carolina in response to the urging of the Charleston Legislative Delegation and the local business community to increase the range of graduate opportunities to support and improve the economic and workforce development of the Lowcountry. Working with the founding institutions, plus the University of South Carolina and Clemson University, LGC continually assesses the educational needs of the Lowcountry and seeks to develop programs that respond to those needs. Funds flow through the CHE to the College of Charleston, the LGC's fiscal agent. LGC's website is www.lowcountrygradcenter.org	\$ 785,099			\$ 785,099	\$ 1,085,099			\$ 1,085,099	Funds flow through to intended recipient. Related 2.2.1, 2.2.3, 3.1.6
Academic Endowment	The Academic Endowment Fund, created through 59-118-10, et seq, enacted in 1997, encourages public colleges to seek out private sector investments. The Endowment provides a modest match to those private sector monies raised by the public 2-year and 4-year colleges to expand on instructional enhancements. Ref: 59-118-10 et. seq.	\$ 160,592			\$ 160,592	\$ 160,592			\$ 160,592	Funds flow through to intended recipient. Related 2.1,2.2, 3.1.6

Agency Name: SC Commission on Higher Education

Agency Code: H03 Section: 011



Fiscal Year 2014-15
Accountability Report

Program Template

Program/Title	Purpose	FY 2013-14 Expenditures				FY 2014-15 Expenditures				Associated Objective(s)
		General	Other	Federal	TOTAL	General	Other	Federal	TOTAL	
EPSCOR	The Experimental Program to Stimulate Cooperative Research (EPSCoR) uses state funding to leverage federal grant funding from NASA, NSF, and NIH for scientific research at public institutions. FY15 Budget Proviso, 11.5 provides direction with respect to EPSCoR Committee Representation and FY15 Proviso 11.7 directs additional funds to the program. Website: scepscoridea.org	\$ 161,314			\$ 161,314	\$ 161,314			\$ 161,314	Funds flow through to intended recipient. Related 2.2, 3.1.6
African American Loan Program	The African American Loan program supports minority teacher education at Benedict College and South Carolina State University. FY15 budget proviso 11.3 provides directs funding to the institutions and provides that CHE has monitoring and reporting responsibilities. Promulgated program regulations are found in the SC Code of Regulations, R.62.540 - R.62.590.	\$ 87,924			\$ 87,924	\$ 150,676			\$ 150,676	Funds flow through to intended recipient. FY15 funds include \$31,376 from FY14. 2.1.6
Performance Funding	Funds related to this CHE budget line were re-directed in the early to mid-2000s to provide funding fo EPSCoR and also SC State University. In FY15, budget Proviso 11.7 directs 80% of the line item funding to EPSCoR and 20% to support the management education programs of the School of Business at SC State. The funds flow through CHE to the intended recipients.	\$ 1,397,520			\$ 1,397,520	\$ 1,397,520			\$ 1,397,520	Funds flow through to intended recipient. Related 2.2, 3.1.6

Agency Name: SC Commission on Higher Education

Agency Code: H03 Section: 011



Fiscal Year 2014-15
Accountability Report

Program Template

Program/Title	Purpose	FY 2013-14 Expenditures				FY 2014-15 Expenditures				Associated Objective(s)
		General	Other	Federal	TOTAL	General	Other	Federal	TOTAL	
Charleston Transition Connection	In 2008, the General Assembly provided funds to a nonprofit organization dedicated to expanding education, employment and independent living opportunities for individuals with intellectual disabilities. Project funds were to be used in the support of the development of postsecondary programs for students with intellectual disabilities such as significant learning, cognitive or developmental disabilities. The postsecondary programs provide the opportunity for these students to learn social, academic and vocational skills needed to be successfully employed and live independently. As of FY14 and continuing in FY15, the General Assembly directed that the existing funds be transferred to the CHE Need-Based Grant Program and dedicated for the purpose of need-based grants to students in identified transition programs. Presently, the recognized programs include Clemson, Coastal Carolina, College of Charleston, USC, and effective spring 2015, Winthrop. The FY15 related budget proviso is 11.16.				See Need-Based Grants below. (Program funds of \$179,178 transferred as of FY13-14 to need-based and dedicated to grants to students in CTC programs.)				See Need-Based Grants below. (Program funds of \$179,178 transferred as of FY13-14 to need-based and dedicated to grants to students in CTC programs.)	2.1.6
State Electronic Library	The Statewide Electronic Library, known as PASCAL, is a cooperative and collaborative effort among our public and private higher education libraries that is transforming how our state's citizens access vital academic information. It connects SC's 58 public and independent (private) higher education libraries to enable an enhanced and more cost-effective means of sharing academic collections statewide. Through SC's Higher Education Libraries, 250,000+ post-secondary students, faculty, and researchers will benefit from expanded access to sophisticated academic resources. Others in the state will benefit by gaining access to the higher education academic resources through the State Library or via "Walk-In" use of academic libraries. The program helps the State avoid duplicated expenditures by enabling a mechanism for group purchases of essential sophisticated electronic academic databases that will be available to all of SC's higher education libraries. Program website: www.pascal.org.	\$ 164,289	\$ 3,395,597		\$ 3,559,886	\$ 164,289	\$ 2,573,922		\$ 2,738,211	Funds flow through to PASCAL. CHE serves as fiscal agent. 2.1, 3.1.6

(Appropriations Act does not include IV)

Agency Name: SC Commission on Higher Education

Agency Code: H03 Section: 011



Fiscal Year 2014-15
Accountability Report

Program Template

Program/Title	Purpose	FY 2013-14 Expenditures				FY 2014-15 Expenditures				Associated Objective(s)
		General	Other	Federal	TOTAL	General	Other	Federal	TOTAL	
V. Licensing										
Licensing	The Commission is the sole authority for licensing nonpublic educational institutions established in South Carolina and for those established elsewhere which want to operate in or confer degrees in this State. SC Code of Laws 59-58-10 et seq and SC Code of Regulations, R.62.1-R.62.100	\$ 47,016	\$ 236,490		\$ 283,506	\$ 47,972	\$ 306,327		\$ 354,299	1.2.1, 1.2.2, 1.2.3, 1.2.4
VI. State Approving Section										
State Approving Section	The Veterans Education & Training Section functions as the SC State Approving Agency (SAA). The SAA is part of the National Association of SAA's (NASAA), comprised of state agencies that have responsibility for the approval and training available through the GI Bill. The SAA acts on behalf of the Federal Government to evaluate educational/vocational institutions and training establishments. SAA's focus is the review, audit, evaluation, and approval of quality programs under state and federal criteria where veterans may use their education benefits. Approval may be granted for private for-profit degree-granting colleges & universities; professional/vocational certificate or diploma granting institutions (non-college degree); On-the-Job-Training establishments (6 - 24 mos training programs); non-registered apprenticeship establishments (more than 24 mos and annual related training); and flight training schools (for pilot licenses and aviation employment), and licensing and certificates testing. Upon approval, SAA provides oversight by conducting on-site compliance survey visits and when deemed necessary, technical assistance visits.			\$ 272,495	\$ 272,495		\$ 266,782		\$ 266,782	1.2.3, 1.2.6

(Appropriations Act does not include IV)

Agency Name: SC Commission on Higher Education

Agency Code: H03 Section: 011



Fiscal Year 2014-15
Accountability Report

Program Template

Program/Title	Purpose	FY 2013-14 Expenditures				FY 2014-15 Expenditures				Associated Objective(s)		
		General	Other	Federal	TOTAL	General	Other	Federal	TOTAL			
VIII. CHE Grant & Other Higher Education Collaborations - Special Items												
EEDA	The Education and Economic Development Act of 2005 (EEDA) required a career cluster model be developed in secondary education in order to promote pathways to success for the state's students. As part of the initiative, CHE and the public institutions of higher learning were directed to work with state education partners in ensuring seamless pathways from high school to college and to support activities related to workforce promotion. The funding supports staff work on alignment issues and related projects developed during the implementation of the legislation including the electronic (on-line) SC Transfer and Articulation System (www.SCTRAC.org) for public colleges and the SC Course Alignment Project which brings together high school and college professors to work on alignment of related ending high school courses and beginning college courses.	\$	1,171,983		\$	1,171,983	\$	1,190,635		\$	1,190,635	1.1, 2.2, 3.1.3, 3.1.6 (Note on Expenditures: FY15 includes \$21,423 from FY14)
Improving Teacher Quality (ITQ)	The federal Improving Teacher Quality (ITQ) grant program was enacted as Title II of the No Child Left Behind Act to provide funds to local education agencies, higher education institutions, and nonprofit organizations to: conduct professional development activities in core academic subjects to ensure that teachers, highly qualified paraprofessionals and principals have subject matter knowledge in the academic subjects they teach, including computer-related technology to enhance instruction. There are currently 6 funded projects for the 2014-15 year. Ref: 59-103-140, 59-26-20	\$	925,908		\$	925,908		\$	538,184	\$	538,184	3.1.6

Agency Name: SC Commission on Higher Education

Agency Code: H03 Section: 011



Fiscal Year 2014-15
Accountability Report

Program Template

Program/Title	Purpose	FY 2013-14 Expenditures				FY 2014-15 Expenditures				Associated Objective(s)
		General	Other	Federal	TOTAL	General	Other	Federal	TOTAL	
GEAR UP	Gaining Early Awareness and Readiness for Undergraduate Programs (GEAR UP) is a federal discretionary program to significantly increase the number of low-income students who are prepared to enter and succeed in postsecondary education. The US Department of Education (USED) awards federal funds for state and local partnership grants through a competitive grant process. CHE is designated by the Governor as the lead state agency to apply for and administer the grant. CHE is presently managing its 3rd GEAR UP grant which was awarded in September 2011 and provides \$22.3 million over 7 years. SC GEAR UP serves 7th grade students in middle schools along the state's I-95 corridor providing services in a cohort-based approach through the freshman year in college. The program seeks to increase academic readiness for secondary and postsecondary challenges. FY15 budget proviso 11.4	\$ 177,201		\$ 2,711,780	\$ 2,888,981	\$ 177,201		\$ 4,129,179	\$ 4,306,380	3.1.6

Agency Name: SC Commission on Higher Education

Agency Code: H03 Section: 011



Fiscal Year 2014-15
Accountability Report

Program Template

Program/Title	Purpose	FY 2013-14 Expenditures				FY 2014-15 Expenditures				Associated Objective(s)
		General	Other	Federal	TOTAL	General	Other	Federal	TOTAL	
College Access Challenge Grant	College Access Challenge Grants (CACG) are federal challenge grants available to states since 2008 for purposes of fostering partnerships among federal, state, and local governments and philanthropic organizations to increase the number of low-income students prepared to enter and succeed in postsecondary education. Grants are awarded annually through USED, and states must apply and demonstrate a maintenance of effort requirement (MOE) with respect to higher education funding. CHE was identified by the Governor as the lead state agency. Under CACG, CHE initiated an array of services including 1) support for SC College Access Network; 2) Higher Ed. Awareness Program support; 3) College Application Month; 4) guidance counselor resources, training, and recognition; 5) SC CAN GO media campaign, awareness polling, and website; and 5) partnerships with SC Higher Ed Foundation & pilot communities to increase postsecondary access and awareness. CACG is no longer available to SC as a result of the State's failure to meet the required MOE that focuses on state financial support of higher education (i.e., support for public institutions and for public and private institutions with respect to student financial aid) in comparison to the past five-year average. SC's support for public education falls far short of the MOE provision and a waiver of the MOE was not granted in 2013. As a result, CACG funding ended in 2015.	\$ 1,217,148			\$ 1,217,148			\$ 1,143,479	\$ 1,143,479	3.1.6
College Goal Sunday	In 2012 CHE was granted and received a one-year award from USA Funds to implement College Goal Sunday. The program aims to increase the number of college-bound students completing the "Free Application for Federal Student Aid" (FAFSA). The grant has continued and the program has grown from an initial pilot along the I-95 corridor to a statewide program. Grant funding for all College Goal programs is anticipated to end in FY16.	\$	34,902		\$ 34,902	\$	18,498		\$ 18,498	3.1.6

Agency Name: SC Commission on Higher Education

Agency Code: H03 Section: 011



Fiscal Year 2014-15
Accountability Report

Program Template

Program/Title	Purpose	FY 2013-14 Expenditures				FY 2014-15 Expenditures				Associated Objective(s)	
		General	Other	Federal	TOTAL	General	Other	Federal	TOTAL		
SmartState Program Administration (Note: Program expenditures shown here reflect administration and also include for approved Centers the state matching funds authorized during the fiscal year by the Other Funds Oversight Committee for drawdown upon confirmation of the requisite 1:1 non-state match.)	In 2002, the General Assembly established a competitive grants program, the SC Centers of Economic Excellence Program, now known as SmartState, to award to South Carolina's three research universities funds for endowed professorships in areas that will enhance economic opportunities for the state's citizens. SmartState is overseen by the Research Centers of Excellence Review Board with staff and support for the Board provided by CHE. The program has been funded through lottery revenues which are held in trust for the program to be matched on a dollar-for-dollar basis with non-state funds to carry out the purpose of the program. No new funding has been provided since FY09. The other funds here provide for program administration at CHE and the institutions. For more information about SmartState, www.smartstatesc.org. SC Code of Laws 2-75-05 et. seq. and FY15 budget proviso 3.5.	\$	9,629,566		\$ 9,629,566	\$	7,056,153		\$ 7,056,153	2.1, 2.2, 3.1.6	
IX. Employee Benefits											
Employee Benefits	State Employer Contribution (Employee Benefits) consist of payments made on behalf of employees for retirement, social security, worker's compensation & unemployment insurance, health and dental insurance. And pre-death retirement benefits.	\$	371,493		\$ 371,493	\$	379,410		\$ 379,410	n/a	
X. Scholarships and Assistance - Special Items											
South Carolina National Guard College Access Program (SCNG CAP)	South Carolina National Guard (SCNG CAP) provides financial incentives for enlisting in the Army or Air National Guard in areas of critical need. Effective with the passage of Act 40 of 2007, SCNG CAP replaced a former loan repayment program for SCNG CAP members which ended and phased-out. In accordance with the program's authorizing legislation, CHE administers the program in coordination with the SC NG. The program regulations provide for eligibility/commitment requirements for qualifying for tuition benefits, limitations on the amount of tuition assistance, and qualifications for successful program participation in relation to SC NG. SC Code of Laws 59-114-10 et seq. and SC Regulation, R.62.250-R.62.263, and FY15 budget proviso 11.15.	\$	89,930	\$	2,779,525	\$	90,006	\$	3,119,526	\$ 3,209,532	2.1.6, 1.1.5 (Note: FY15 General Fund expenditures include \$38 from FY14)

Agency Name: SC Commission on Higher Education

Agency Code: H03 Section: 011



Fiscal Year 2014-15
Accountability Report

Program Template

Program/Title	Purpose	FY 2013-14 Expenditures				FY 2014-15 Expenditures				Associated Objective(s)
		General	Other	Federal	TOTAL	General	Other	Federal	TOTAL	
LIFE Scholarships	The Legislative Incentive for Future Excellence Scholarship (LIFE) is a merit-based scholarship administered by the financial aid office at eligible SC public/independent colleges and universities. LIFE may be used towards cost-of-attendance for up to 8 terms based on initial college enrollment. Students must be enrolled in their first program - one-year, associate's degree, two-year program leading to a baccalaureate degree, baccalaureate degree, or professional degree. For initial eligibility at a 4-year institution, students must be an SC resident and attain 2 of 3 criteria; 1) have a 3.0 high school GPA (based on the UGP) 2) attain a 1100 SAT/ACT equivalent or 3) class rank in the top 30% of their graduating class. Initial eligibility at a 2-year college requires that students be a SC resident and have a 3.0 high school GPA (based on the UGP). LIFE recipients may earn up to \$5,000 and an additional up to \$2,500 beginning in the second year if majoring in eligible math/science programs. SC Code of Laws 59-149-10 et seq, 59-111-25, 59-101-430(B), Regulations, R .62-1200.1-1200.70, and related FY14 budget provisos 3.5, 11.11, 117.45.	\$ 59,754,048	\$ 120,741,190		\$ 180,495,238	\$ 48,856,393	\$ 138,335,420		\$ 187,191,813	2.1.6, 1.1.5 (Note: FY15 appropriations included funds for implementing summer awards for LIFE and PF. The expenditures of \$436,0095.74 are reflected in the LIFE program)

Agency Name: SC Commission on Higher Education

Agency Code: H03 Section: 011



Fiscal Year 2014-15
Accountability Report

Program Template

Program/Title	Purpose	FY 2013-14 Expenditures				FY 2014-15 Expenditures				Associated Objective(s)
		General	Other	Federal	TOTAL	General	Other	Federal	TOTAL	
Palmetto Fellows Scholarships	The Palmetto Fellows Scholarship(PF) is a merit-based scholarship program administered by CHE. PF requires that the student be an SC resident and attain a minimum 1200 SAT/ACT equivalent, a class rank in the top 6% (or for classes in which the top 6% is not a whole number, the next student), and a high school grade point average (GPA) of 3.5 based on the uniform grading policy (UGP). Alternatively, students may attain a 1400 SAT/or ACT equivalent and a high school GPA of 4.0 on the UGP. This award is provided for 8 semesters provided eligibility is maintained. Students must be enrolled in 4-year SC institutions. Effective in 2007 with legislation passed by the General Assembly, recipients beginning in the sophomore year may receive an enhanced award for majoring in math, science, engineering and health-related areas. Fellows may earn up to \$6,700 in the 1st year, \$2,500 in the 2nd through 4th years, and may additionally receive up to \$2,500 beginning in the second year if majoring in eligible math/science programs. SC Code of Laws 59-104-20, 59-143-10 et seq, 59-101-345, 59-111-25, Regulations R.62.300-375, and related FY15 budget provisos 11.11 and 117.45.	\$ 8,439,310	\$ 35,043,477		\$ 43,482,787	\$ 8,439,310	\$ 36,866,748		\$ 45,306,058	2.1.6, 1.1.5. See also Education Endowment.
SC HOPE Scholarships	The SC HOPE Scholarship Program was established under the SC Education Lottery Act approved by the General Assembly during the 2001 legislative session. The program is a merit-based scholarship created for students attending a four-year institution who do not qualify for the LIFE or Palmetto Fellows Scholarship. The scholarship is awarded during the freshman-year of attendance only. SC HOPE requires that students be an SC resident and have a 3.0 high school GPA (based on UGP) be enrolled in a four-year institution, and not be receiving the LIFE or Palmetto Fellows Scholarship. The award is for the first year only and students may receive up to \$2,800 toward the cost of attendance. SC HOPE recipients may become eligible for the LIFE Scholarship in subsequent years. SC Code of Laws 59-150-370, 59-101-430(B), Regulation 62.900.85-900.140, and related FY15 budget proviso 3.5.		\$ 231,727	\$ 8,394,400	\$ 8,626,127	\$ 231,727	\$ 8,716,241		\$ 8,947,968	2.1.6, 1.1.5

Agency Name: SC Commission on Higher Education

Agency Code: H03 Section: 011



Fiscal Year 2014-15
Accountability Report

Program Template

Program/Title	Purpose	FY 2013-14 Expenditures				FY 2014-15 Expenditures				Associated Objective(s)
		General	Other	Federal	TOTAL	General	Other	Federal	TOTAL	
SREB Contract Program & Assessments	The Southern Regional Education Board (SREB) was founded in 1948 by Governors of member states to help states improve and share resources in higher education. Today, SREB continues to organize and administer regional arrangements to avoid costly duplication and expensive development of new programs such as the voluntary Academic Common Market program. SREB data collection, policy documents, comparative research and publications on K-20 issues, as well as participation in other programs are benefits of SC's membership in this 16 state consortium. SREB operates through state support provided by member states. Each year, Governors of member states receive an invoice for their share of SREB general operations and regional education programs of the SREB and contracts-for-services. CHE coordinates SC's participation in higher education programs. SREB contract programs offer students pursuing professional health degrees admission to schools in other states for the price of in-state tuition and fees or reduced tuition at private institutions. Participating states pay schools to maintain slots in their professional programs and save the expense of building and staffing these schools. SC funds slots in optometry and veterinary medicine at 5 partner institutions. SREB serves as the fiscal agent and handles the administrative duties. Related FY15 budget provisos: 11.1, 11.2, 11.6.	\$ 3,555,000			\$ 3,555,000	\$ 3,684,450			\$ 3,684,450	2.1.6, 1.1.5, 3.1.6 (Note: Expenditures in FY15 include \$102,510 from FY14.)
SREB Arts Program	This is an SREB program that provides tuition assistance to SC residents to attend the NC School of the Arts, a conservatory-based high school program that provides for the training of professionals in the arts. The school is located in Winston-Salem, NC. The amount per student is determined by the amount appropriated divided by the number of South Carolina residents who attend. See above description of SREB and FY15 budget proviso 11.2.	\$ 7,177			\$ 7,177	\$ -			\$ -	2.1.6, 1.1.5, 3.1.6

Agency Name: SC Commission on Higher Education

Agency Code: H03 Section: 011



Fiscal Year 2014-15
Accountability Report

Program Template

Program/Title	Purpose	FY 2013-14 Expenditures				FY 2014-15 Expenditures				Associated Objective(s)
		General	Other	Federal	TOTAL	General	Other	Federal	TOTAL	
Educational Endowment	Funds provided for the educational endowment are directed for higher education to be halved between the Palmetto Fellows Scholarships and Need Based Grants. Additional funding for these programs is provided through the Education Lottery. SC Code of Laws 59-140-30 and 48-46-40(F).	\$ 24,000,000			\$ 24,000,000	\$ 24,000,000			\$ 24,000,000	By statute, funds are divided equally in support of Palmetto Fellows Scholarships and Need-Based Grants. See the related programs.
SC Need-Based Grants	Need-based funds provided to South Carolina college students at public institutions. A portion of these funds are authorized for private institutions (approximately 17% which is based on enrollments). Per statute, qualified students at public institutions may receive up to \$2,500 annually. The program is campus administered at the public institutions. The funds for independent institutions supplement the S.C. Tuition Grants program through which need based grants are provided for students attending the private institutions. The program has been funded additionally through the Education Endowment which is supported with Barnwell Nuclear Waste fee revenues and general fund appropriations. Need-based grants include funds transferred from the Charleston Transition Connection (see above) to provide need-based grants to students in recognized transition programs. SC Code of Laws 59-142-10 et seq, 59-143-10 et seq, 59-101-345, 59-111-25, Regulations R. 62.450-505, and related FY15 budget provisos 3.5 and 11.9.	\$ 179,178	\$ 12,934,183		\$ 13,113,361	\$ 2,779,178	\$ 12,217,919		\$ 14,997,097	2.1.6, 1.1.5. For other funding received, see also Education Endowment. See also Charleston Transition Connection above. Expenditures reported here reflect the transferred funds for this program.

Agency Name: SC Commission on Higher Education

Agency Code: H03 Section: 011



Fiscal Year 2014-15
Accountability Report

Program Template

Program/Title	Purpose	FY 2013-14 Expenditures				FY 2014-15 Expenditures				Associated Objective(s)
		General	Other	Federal	TOTAL	General	Other	Federal	TOTAL	
Other Programs not listed in CHE Part 1A - EIA-funded programs and Lottery-funded programs that flow through CHE										
EIA-Funded Centers of Excellence	The purpose of the EIA - Centers of Excellence competitive grant program is to enable eligible institutions or groupings of institutions, to serve as "state-of-the-art" resource centers for South Carolina in a specific area related to the improvement of teacher education. Teacher education encompasses both in-service and pre-service training. These "resource centers" develop and model state-of-the-art teaching practices, conduct research, disseminate information and provide training for K-12 and higher education personnel in the Center's specific area of expertise. In 2014-15, there are currently 14 active centers, 5 of which are currently receiving state support. EIA funds appropriated for the CHE Centers of Excellence program flow-through the State Department of Education (Part 1A Education Improvement Act, F. Partnerships, Centers of Excellence (H03)) to CHE. Included in the appropriation are \$350,000 in funds to support an active center at Francis Marion University that had been initiated as a Center of Excellence. In FY15, the program grant funding was increased by \$250,000 to fund a new Center of Excellence in College and Career Readiness at Francis Marion University. SC Code of Laws 59-103-140 and 59-26-20 and related FY15 budget proviso, 1A.36 and 1A.9.	\$	887,526		\$ 887,526	\$	1,137,526		\$ 1,137,526	3.1.4, 3.1.6

Agency Name: SC Commission on Higher Education

Agency Code: H03 Section: 011



Fiscal Year 2014-15
Accountability Report

Program Template

Program/Title	Purpose	FY 2013-14 Expenditures				FY 2014-15 Expenditures				Associated Objective(s)
		General	Other	Federal	TOTAL	General	Other	Federal	TOTAL	
EIA-Funded Teacher Recruitment Programs	Two separate teacher recruitment projects provide leadership in identifying, attracting, placing and retaining well-qualified individuals for the teaching profession in our state. <u>SC State's Program for the Recruitment of Minority Teachers (SCPRRMT)</u> seeks to promote teaching as a career choice by publicizing the many career opportunities and benefits in the field of education in SC. The mission of SCPRRMT is to increase the pool of minority teachers in the State by making education accessible to non-traditional students (teacher assistants, career path changers, and technical college transfer students) and by providing an academic support system to help students meet entry, retention, and exit program requirements. SCPRRMT provides financial aid for its teacher education students and technical college studies. The purpose of <u>Winthrop's Center for Educator Recruitment, Retention, & Advancement (CERRA)</u> is to provide leadership in identifying, attracting, placing and retaining well-qualified individuals for the teaching profession in our state. In doing so, CERRA will respond to changing needs for teachers from underrepresented populations, in critical subject fields and in under-served geographical areas in South Carolina. The Center will work cooperatively with other organizations to promote the teaching profession. SC Code of Laws 59-26-20 abd 59-103-130 and related FY15 budget provisos 1A.8 and 1A.66		\$ 4,243,517		\$ 4,243,517		\$ 4,243,527		\$ 4,243,527	Funds flow through to intended recipients. CHE has responsibilities in review and recommending budgets of programs. 3.1.6
Higher Education Excellence Enhancement	Aid to public and private Historically Black Colleges and Universities as well as other institutions identified in law for infrastructure development and enhancement of educational programs. The program was authorized by the General Assembly through 2-77-10, et seq, with the stated general purpose of enhancing the educational opportunities of low-income and educationally disadvantaged students. Funds for this activity flow-through CHE to eligible institutions as mandated. SC Code of Laws 2-77-10 et. seq. and FY15 budget proviso 11.3 and 3.5.		\$ 3,978,053		\$ 3,978,053		\$ 4,307,095		\$ 4,307,095	Funds flow through to intended recipients. 3.1.6

Agency Name: SC Commission on Higher Education

Agency Code: H03 Section: 011



Fiscal Year 2014-15
Accountability Report

Program Template

Program/Title	Purpose	FY 2013-14 Expenditures				FY 2014-15 Expenditures				Associated Objective(s)
		General	Other	Federal	TOTAL	General	Other	Federal	TOTAL	
Lottery Tuition Assistance	Lottery Tuition Assistance (LTA) provides aid for eligible students at two-year public and independent institutions. Students must complete the Free Application for Federal Student Aid (FAFSA), be degree-seeking, and be enrolled in a minimum of six hours to be eligible. Award amounts are set annually based on estimated student numbers and appropriations. In FY14, students may be awarded \$1,140 per semester full-time or \$95 per credit hour. Appropriated total program funds are allocated and divided between CHE and State Technical College Board for the program as directed. The funds through CHE support students at eligible public 2-year campuses of USC and the eligible private institution. SC Code of Laws 59-150-360, Regulation R.62.900.150 -62.900.195, and FY15 budget proviso 3.5.		\$ 2,558,656		\$ 2,558,656		\$ 3,076,925		\$ 3,076,925	2.1.6, 1.1.5 (Funds reported here are for students enrolled in USC's 2-year campuses and Spartanburg Methodist. Appropriations for technical colleges are allocated to SBTCE.)
Lottery Technology	These Educational Lottery funds are specifically intended to assist the 20 public 2-year (USC 2-yr Regional Campuses and Technical Colleges) and 4-year Comprehensive Teaching Institutions in supporting higher education technology needs and facilitating the acquisition of advanced technology. Ref: 59-150-355, and FY15 Part 1B Proviso 3.2 and 3.5.		\$ 9,576,816		\$ 9,576,816		\$ 8,860,457		\$ 8,860,457	2.1.6
Public 2-yr & 4-yr colleges and universities, Critical Equipment, Repair & Replacement	Since FY 2012-13, funds have been provided through the lottery to support to public 2-year and 4-year colleges and universities for maintenance, repair and equipment needs. The funds flow through CHE to the institutions; a portion of the funds is directed to the State Technical College Board for the technical colleges and a portion to allocated by formula as directed to the research, comprehensive and 2-year regional campuses of USC. As of FY14, the funds must be matched by an equivalent amount by the institutions. Related FY15 budget proviso 3.5.		\$ 22,584,883		\$ 22,584,883		\$ 4,227,500		\$ 4,227,500	2.1.4
Nonprofit 4-year institution of higher learning founded in 1956, is a member of ASCI, whose campus has been continuously situated in the same location since 1961	Lottery funds provided in FY15 to Southern Methodist College for maintenance and improvement in classroom, library, laboratory, or other institutional facilities.				n/a		\$ 75,933		\$ 75,933	Funds flow through to intended recipients.

Agency Name: SC Commission on Higher Education

Agency Code: H03 Section: 011



Fiscal Year 2014-15
Accountability Report

Program Template

Program/Title	Purpose	FY 2013-14 Expenditures				FY 2014-15 Expenditures				Associated Objective(s)
		General	Other	Federal	TOTAL	General	Other	Federal	TOTAL	
Nonprofit bachelors level institution of higher learning, established in 1894, is a member of TRACS, with 60% or more low-income students	Lottery funds provided in FY15 to Clinton College for maintenance & improvement in classroom, library, laboratory, or other institutional facilities.				n/a		\$ 75,933		\$ 75,933	Funds flow through to intended recipients.
Non-profit 4-year comprehensive institution of higher learning, first established as a college in 1908, is SACS accredited, with 40% or more minority enrollment	Lottery funds provided in FY15 to Coker College for maintenance and improvement in classroom, library, laboratory or other institutional facilities.				n/a		\$ 75,933		\$ 75,933	Funds flow through to intended recipients.
Dayco Scholarships	The Dayco Scholarship is a merit-based/need-based scholarship administered byCHE. To be eligible, applicants must be either an employee or a dependent of an employee of Dayco Products, Inc. employed by a branch of the company located inSC for at least four calendar years. The Dayco Scholarship may be used towards the cost of attendance for up to eight terms based on the student's initial college enrollment date. Students must be enrolled in their first one-year program, first associate's degree, first two-year program leading to a baccalaureate degree, first baccalaureate degree, or first professional degree.	\$	-			\$	4,280		\$ 4,280	
Child Abuse Medical Response Program	Funds allocated through FY15 budget proviso 118.16 as a pass through to USC for the intended program.				n/a	\$	225,000		\$ 225,000	Funds flow through to intended recipients.
Summary Totals		\$ 106,277,256	\$ 229,063,847	\$ 11,378,675	\$ 346,719,778	\$ 96,598,483	\$ 235,532,507	\$ 6,077,624	\$ 338,208,614	

Agency Name: SC Commission on Higher Education

Fiscal Year 2014-15
Accountability Report

Agency Code: H03 Section: 011

Performance Measurement Template

Item	Performance Measure	Last Value FY13-14 Report	Current Value FY14-15 Report	Target Value	Time Applicable	Data Source and Availability	Reporting Freq.	Calculation Method	iated Object
------	---------------------	------------------------------	---------------------------------	--------------	-----------------	------------------------------	-----------------	--------------------	--------------

NOTE: The data below continue to represent program data reported in accountability reports prior to the format change as of the FY 2013-14 Accountability Reports and include primarily measures of activity. CHE recently engaged in new strategic planning and specific metrics have not yet been identified to more directly support the identified strategic objectives in support of planning priorities. The Agency Discussion and Analysis included with this report identifies progress and activities made on identified strategic goals in FY 2014-15.

Scholarship and Grant Programs

1	Palmetto Fellows (PF), # Student Awards	7,082	pending, not yet available		Annual, Academic Year	CHE Annual Disbursement Report, CHEMIS Data	Data collected each semester during academic year	Number of awards made, unduplicated	2.1.6
2	Palmetto Fellows (PF), Dollars Awarded	\$49,531,341	pending, not yet available		Annual, Academic Year	CHE Annual Disbursement Report, CHEMIS Data	Data collected each semester during academic year	Number of dollars awarded, unduplicated	2.1.6
3	LIFE, # Student Awards	36,877	pending, not yet available		Annual, Academic Year	See PF Awards above	See PF Awards above	See PF Awards above	2.1.6
4	LIFE, Dollars Awarded	\$157,685,397	pending, not yet available		Annual, Academic Year	See PF Dollars Awarded above	See PF Dollars Awarded above	See PF Dollars Awarded above	2.1.6
5	HOPE, # Student Awards	3,401	pending, not yet available		Annual, Academic Year	See PF Awards above	See PF Awards above	See PF Awards above	2.1.6
6	HOPE, Dollars Awarded	\$7,821,792	pending, not yet available		Annual, Academic Year	See PF Dollars Awarded above	See PF Dollars Awarded above	See PF Dollars Awarded above	2.1.6
7	Need-Based Grants, # Student Awards	29,975	pending, not yet available		Annual, Academic Year	See PF Awards above	See PF Awards above	See PF Awards above	2.1.6
8	Need-Based Grants, Dollars Awarded	\$24,411,522	pending, not yet available		Annual, Academic Year	See PF Dollars Awarded above	See PF Dollars Awarded above	See PF Dollars Awarded above	2.1.6
9	Lottery Tuition Assistance, # Student Awards	40,986	pending, not yet available		Annual, Academic Year	See PF Awards above	See PF Awards above	See PF Awards above	2.1.6
10	Lottery Tuition Assistance, Dollars Awarded	\$49,584,171	pending, not yet available		Annual, Academic Year	See PF Dollars Awarded above	See PF Dollars Awarded above	See PF Dollars Awarded above	2.1.6
11	National Guard College Assistance Program, # Student Awards	754	pending, not yet available		Annual, Academic Year	CHEMIS program data collection	Data collected each semester during academic year	Number of awards made, unduplicated	2.1.6
12	National Guard College Assistance Program, Dollars Awarded	\$2,807,030	pending, not yet available		Annual, Academic Year	CHEMIS program data collection	Data collected each semester during academic year	Number of dollars awarded, unduplicated	2.1.6
13	# of Events in which staff participated to provide scholarship and grant programs updates to students, parents, and guidance counselors and to increase awareness	32	10		Fiscal Year	CHE Program Data, Staff Report	Tracked throughout the year	Number	2.1.6
14	Workshops hosted for financial aid representatives to review regulations and program changes to ensure proper administration	6	14		Fiscal Year	CHE Program Data, Staff Report	Tracked throughout the year	Number	2.1.6

Agency Name: SC Commission on Higher Education

Fiscal Year 2014-15
Accountability Report

Agency Code: H03 Section: 011

Performance Measurement Template

Item	Performance Measure	Last Value FY13-14 Report	Current Value FY14-15 Report	Target Value	Time Applicable	Data Source and Availability	Reporting Freq.	Calculation Method	Related Objectives
------	---------------------	------------------------------	---------------------------------	--------------	-----------------	------------------------------	-----------------	--------------------	--------------------

NOTE: The data below continue to represent program data reported in accountability reports prior to the format change as of the FY 2013-14 Accountability Reports and include primarily measures of activity. CHE recently engaged in new strategic planning and specific metrics have not yet been identified to more directly support the identified strategic objectives in support of planning priorities. The Agency Discussion and Analysis included with this report identifies progress and activities made on identified strategic goals in FY 2014-15.

15	Number of student scholarship/grant appeals processed for which decisions were rendered	169	163		Fiscal Year	CHE Program Data, Staff Report	Tracked throughout the year	Number	2.1.6
Students participating in SREB programs									
16	SREB School of Arts Student Participation (new and continuing)	3	0		Academic Year	CHE participant information	Annual review, data collected as enrolled	Number of new and continuing participants	2.1.6
17	SREB Contract Programs for Veterinary Medicine and Optometry (new and continuing)	123	123		Academic Year	CHE participant information	Annual review, data collected as enrolled	Number of new and continuing participants	2.1.6
18	SREB Academic Common Market Participation	100	88		Calendar Year	Annually. CHE program report	Annual review, data collected as enrolled	Number of new and continuing SC students certified for participation	2.1.6
19	Doctoral Scholar Participants (new and continuing)	15	15		Academic Year	CHE participant information	Annual review, data collected as enrolled	Number of new and continuing participants	2.1.6
Institutional Program Licensing Activity									
20	Licensing - Agent Permits	344	283		Fiscal Year	CHE Program Data, Staff Report	Tracked throughout the year	Number	1.1.4
21	Licensing - Transcripts Requested	198	189		Fiscal Year	CHE Program Data, Staff Report	Tracked throughout the year	Number	1.1.4
22	Licensing - New Degree Granting Licenses, Initial	7	0		Fiscal Year	CHE Program Data, Staff Report	Tracked throughout the year	Number	1.1.4
23	Licensing - Degree Granting Licenses, Amendments to Existing Licenses	4	1		Fiscal Year	CHE Program Data, Staff Report	Tracked throughout the year	Number	1.1.4
24	Licensing - Initial Non-degree licenses	8	12		Fiscal Year	CHE Program Data, Staff Report	Tracked throughout the year	Number	1.1.4
25	Licensing - Total Licenses Issued	209	219		Fiscal Year	CHE Program Data, Staff Report	Tracked throughout the year	Number	1.1.4
26	Licensing - Licenses Relinquished, Deferred, Denied, or Revoked	6	13		Fiscal Year	CHE Program Data, Staff Report	Tracked throughout the year	Number	1.1.4
27	Licensing - Student Complaints	82	55		Fiscal Year	CHE Program Data, Staff Report	Tracked throughout the year	Number	1.1.4
Veterans Education and Training Programs									
28	SAA - Number of program approvals for degree, diploma, and certificate programs at each school approved for veterans benefits	1,383	1,403		Federal Fiscal Year (Oct 1-Sept 30, FY14 & FY15)	CHE Program Data, Staff Report	Tracked throughout the year	Number	1.1.4

Agency Name: SC Commission on Higher Education

Fiscal Year 2014-15
Accountability Report

Agency Code: H03 Section: 011

Performance Measurement Template

Item	Performance Measure	Last Value FY13-14 Report	Current Value FY14-15 Report	Target Value	Time Applicable	Data Source and Availability	Reporting Freq.	Calculation Method	iated Object
------	---------------------	------------------------------	---------------------------------	--------------	-----------------	------------------------------	-----------------	--------------------	--------------

NOTE: The data below continue to represent program data reported in accountability reports prior to the format change as of the FY 2013-14 Accountability Reports and include primarily measures of activity. CHE recently engaged in new strategic planning and specific metrics have not yet been identified to more directly support the identified strategic objectives in support of planning priorities. The Agency Discussion and Analysis included with this report identifies progress and activities made on identified strategic goals in FY 2014-15.

29	SAA - OJT Apprenticeships and Training: Number of Business Organizations across SC involved	50	68		Federal Fiscal Year (Oct 1-Sept 30, FY14 & FY15)	CHE Program Data, Staff Report	Tracked throughout the year	Number	1.1.4
30	SAA - OJT Apprenticeships and Training: Number of Veterans enrolled in career and training programs	179	238		Federal Fiscal Year (Oct 1-Sept 30, FY14 & FY15)	CHE Program Data, Staff Report	Tracked throughout the year	Number	1.1.4
31	SAA - OJT Apprenticeships and Training: Number of Approved Career Training Objectives (i.e., types of available jobs)	192	197		Federal Fiscal Year (Oct 1-Sept 30, FY14 & FY15)	CHE Program Data, Staff Report	Tracked throughout the year	Number	1.1.4
32	SAA - OJT Apprenticeships and Training: Number of the types of career training objectives in which veterans participated.	16	17		Federal Fiscal Year (Oct 1-Sept 30, FY14 & FY15)	CHE Program Data, Staff Report	Tracked throughout the year	Number	1.1.4
CHE Academic Program Approval									
33	Academic Program Approval & Review - New Proposals Reviewed	33	26		Fiscal Year	CHE Program Data, Staff Report	Tracked throughout the year	Number	1.1
34	Academic Program Approval & Review - Existing Programs Terminated by Institutions	48	61		Fiscal Year	CHE Program Data, Staff Report	Tracked throughout the year	Number	1.1
35	Academic Program Approval & Review - Program Modifications Reviewed	20	38		Fiscal Year	CHE Program Data, Staff Report	Tracked throughout the year	Number	1.1
36	Academic Program Approval & Review - Existing Centers Terminated by Institutions	0	1		Fiscal Year	CHE Program Data, Staff Report	Tracked throughout the year	Number	1.1
37	Academic Program Approval & Review - Number of Notification Changes	88	85		Fiscal Year	CHE Program Data, Staff Report	Tracked throughout the year	Number	1.1
CHE Competitive Grant Programs for Public Institutions									
38	Improving Teacher Quality Awards	8	6		Fiscal Year	CHE Program Data, Staff Report	Tracked throughout the year	Number	3.1.6
39	Improving Teacher Quality Submissions	9	10		Fiscal Year	CHE Program Data, Staff Report	Tracked throughout the year	Number	3.1.6
40	EIA-Centers of Excellence Awards	4	5		Fiscal Year	CHE Program Data, Staff Report.	Tracked throughout the year	Number (New & continuing awards. FY14: 1 new, 3 continuing)	3.1.6
41	EIA-Centers of Excellence Submissions (New Proposals & Continuing Requests)	6	8		Fiscal Year	CHE Program Data, Staff Report	Tracked throughout the year	Number	3.1.6
42	Service Learning Awards	3	3		Fiscal Year	CHE Program Data, Staff Report	Tracked throughout the year	Number	3.1.6

Agency Name: SC Commission on Higher Education

Fiscal Year 2014-15
Accountability Report

Agency Code: H03 Section: 011

Performance Measurement Template

Item	Performance Measure	Last Value FY13-14 Report	Current Value FY14-15 Report	Target Value	Time Applicable	Data Source and Availability	Reporting Freq.	Calculation Method	Related Objectives
------	---------------------	------------------------------	---------------------------------	--------------	-----------------	------------------------------	-----------------	--------------------	--------------------

NOTE: The data below continue to represent program data reported in accountability reports prior to the format change as of the FY 2013-14 Accountability Reports and include primarily measures of activity. CHE recently engaged in new strategic planning and specific metrics have not yet been identified to more directly support the identified strategic objectives in support of planning priorities. The Agency Discussion and Analysis included with this report identifies progress and activities made on identified strategic goals in FY 2014-15.

43	Service Learning Submissions	14	14		Fiscal Year	CHE Program Data, Staff Report	Tracked throughout the year	Number	3.1.6
SmartState Program									
44	SmartState Centers Awarded	51	51	n/a	Year-end as of June 30	CHE Program Data	last approved Centers in 2013	Total Centers awarded via the competitive process since FY03 with the last Centers awarded in FY 2012-13.	3.1.6
45	Lottery Funds Awarded for Approved Centers	\$197,600,000	\$197,600,000	n/a	Year-end as of June 30	CHE Program Data	last awards for Centers in 2013	Total lottery funds and program interest made available for awards since FY03	3.1.6
46	Lottery Funds Matched 1:1 and Drawn	\$188,705,157	\$196,951,058	\$197,600,000	Year-end as of June 30	CHE Program Data	Tracked throughout the year	State matching funds drawn upon certification of 1:1 non-state match	3.1.6
47	Percent of Funds Matched & Drawn	95.5%	99.7%	100%	Year-end as of June 30	CHE Program Data	Tracked throughout the year	Percentage Matched & Drawn / Available Dollars for Approved	3.1.6
48	Percent of Non-state Match Funds Pledged	100%	100%	100%	Year-end as of June 30	CHE Program Data	Tracked throughout the year	Percentage of Approved Lottery Funds for which the requisite 1:1 match is pledged	3.1.6
49	Endowed Chairs Created for Funded Centers	88	84		Year-end as of June 30	CHE Program Data	Tracked throughout the year	Total chairs identified for approved Centers.	3.1.6
50	Endowed Chairs Appointed	48	48	84	Year-end as of June 30	CHE Program Data	Tracked throughout the year	Total chairs appointed to date	3.1.6
51	Percent of Chairs Appointed	55%	55%	100%	Year-end as of June 30	CHE Program Data	Tracked throughout the year	Percentage Hired / Appointed Chairs	3.1.6
College Access and Awareness Programs									
52	College Goal Sunday - Participating families	719	1,028		Fiscal Year	CHE Program Data, Staff Report	Tracked throughout the year	Number	3.1.6
53	College Goal Sunday - FAFSAs completed	321	306		Fiscal Year	CHE Program Data, Staff Report	Tracked throughout the year	Number	3.1.6
54	College Goal Sunday - Participating volunteers	325	338		Fiscal Year	CHE Program Data, Staff Report	Tracked throughout the year	Number	3.1.6
55	College Application Month - Participating high schools	186	214		Fiscal Year	CHE Program Data, Staff Report	Tracked throughout the year	Number	3.1.6
56	College Application Month - Participating students	39,358	43,931		Fiscal Year	CHE Program Data, Staff Report	Tracked throughout the year	Number	3.1.6
57	College Application Month - Applications completed	59,184	64,598		Fiscal Year	CHE Program Data, Staff Report	Tracked throughout the year	Number	3.1.6

SC GEAR UP

Agency Name: SC Commission on Higher Education

Fiscal Year 2014-15
Accountability Report

Agency Code: H03 Section: 011

Performance Measurement Template

Item	Performance Measure	Last Value FY13-14 Report	Current Value FY14-15 Report	Target Value	Time Applicable	Data Source and Availability	Reporting Freq.	Calculation Method	Related Object
------	---------------------	------------------------------	---------------------------------	--------------	-----------------	------------------------------	-----------------	--------------------	----------------

NOTE: The data below continue to represent program data reported in accountability reports prior to the format change as of the FY 2013-14 Accountability Reports and include primarily measures of activity. CHE recently engaged in new strategic planning and specific metrics have not yet been identified to more directly support the identified strategic objectives in support of planning priorities. The Agency Discussion and Analysis included with this report identifies progress and activities made on identified strategic goals in FY 2014-15.

58	SC GEAR UP - Services to STUDENTS: # Receiving Tutoring and/or Academic Enrichment / Average # Hours of Service Per Student Receiving the Service Per Year	2,508 / 19.6	1,950 / 31.9		Federal Fiscal Year (Oct 1-Sept 30, FY14 & FY15)	CHE Program Data, Reports of GEAR UP Graduation Coaches.	Tracked throughout the year	Number / Average Hours per Participant	
59	SC GEAR UP - Services to STUDENTS: # Participating in Rigorous Academic Curricula / Average # Hours of Service Per Student Receiving the Service Per Year	1,505 / 135	803 / 135		Federal Fiscal Year (Oct 1-Sept 30, FY14 & FY15)	CHE Program Data, Reports of GEAR UP Graduation Coaches.	Tracked throughout the year	Number / Average Hours per Participant	
60	SC GEAR UP - Services to STUDENTS: # Receiving Comprehensive Mentoring / Average # Hours of Service Per Student Receiving the Service Per Year	3,292 / 10.8	3,023 / 15.2		Federal Fiscal Year (Oct 1-Sept 30, FY14 & FY15)	CHE Program Data, Reports of GEAR UP Graduation Coaches.	Tracked throughout the year	Number / Average Hours per Participant	
61	SC GEAR UP - Services to STUDENTS: # Receiving Advising and/or Academic and Career Planning / Average # Hours of Service Per Student Receiving the Service Per Year	2,993 / 8.3	3,174 / 3.9		Federal Fiscal Year (Oct 1-Sept 30, FY14 & FY15)	CHE Program Data, Reports of GEAR UP Graduation Coaches.	Tracked throughout the year	Number / Average Hours per Participant	
62	SC GEAR UP - Services to STUDENTS: # Participating in College Visits/College Student Shadowing / Average # Hours of Service Per Student Receiving the Service Per Year	1,026/4.9	1,034 / 7.1		Federal Fiscal Year (Oct 1-Sept 30, FY14 & FY15)	CHE Program Data, Reports of GEAR UP Graduation Coaches.	Tracked throughout the year	Number / Average Hours per Participant	
63	SC GEAR UP - Services to STUDENTS: # Participating in Summer Programs / Average # Hours of Service Per Student Receiving the Service Per Year	743 / 3.8	185 / 2.6		Federal Fiscal Year (Oct 1-Sept 30, FY14 & FY15)	CHE Program Data, Reports of GEAR UP Graduation Coaches.	Tracked throughout the year	Number / Average Hours per Participant	
64	SC GEAR UP - Services to STUDENTS: # Receiving Financial Aid Counseling / Average # Hours of Service Per Student Receiving the Service Per Year	916 / 3.9	781 / 2.2		Federal Fiscal Year (Oct 1-Sept 30, FY14 & FY15)	CHE Program Data, Reports of GEAR UP Graduation Coaches.	Tracked throughout the year	Number / Average Hours per Participant	
65	SC GEAR UP - Services to PARENTS: # Participating in Workshops on College Prep/Financial Aid / Average # Hours of Service Per Participant Receiving the Service Per Year	528 / 11.5	236 / 2.0		Federal Fiscal Year (Oct 1-Sept 30, FY14 & FY15)	CHE Program Data, Reports of GEAR UP Graduation Coaches.	Tracked throughout the year	Number / Average Hours per Participant	
66	SC GEAR UP - Services to PARENTS: # Receiving Counseling and/or Advising / Average # Hours of Service Per Participant Receiving the Service Per Year	8,281 / 14.8	8,264 / 14.5		Federal Fiscal Year (Oct 1-Sept 30, FY14 & FY15)	CHE Program Data, Reports of GEAR UP Graduation Coaches.	Tracked throughout the year	Number / Average Hours per Participant	

Agency Name: SC Commission on Higher Education



Fiscal Year 2014-15
Accountability Report

Agency Code: H03 Section: 011

Strategic Planning Template

NOTE: The Commission held a strategic planning session in fall 2014 that resulted in the following strategic agenda that was approved in October 2014. The strategic objectives and targets identified by the Commission are organized below under three broadly stated goals. Objectives related to management of programs (1.2.4, 2.1.6, and 3.1.6) have been added as under the appropriate strategy.

Type	Goal	Item # Strat	Object	Description
G	1			Promote <u>Quality and Effectiveness</u> of South Carolina's Higher Education System
S		1.1		Improve Monitoring and Assessment of Academic Programs and Student Services at SC Public Colleges and Universities
O			1.1.1	Establish performance metrics and outcome measures for assessment of programs
O			1.1.2	Redirect CHE staffing and resources to focus on performance metrics of academic programs approved in past five years
O			1.1.3	Determine options for re-visioning of the Governor's Professor-of-the-Year program (§59-104-220)
O			1.1.4	Conduct risk assessments of data security vulnerabilities
O			1.1.5	Conduct periodic institutional audits of state scholarship and student aid programs funded through CHE
S		1.2		Strengthen Monitoring and Assessment of Non-Public Postsecondary Institutions Operating in SC
O			1.2.1	Establish performance metrics and outcome measures for assessment of programs at non-public institutions
O			1.2.2	Redirect CHE staffing and resources to focus on performance metrics of programs at non-public institutions approved in past five years
O			1.2.3	Improve functional collaboration between CHE's State Approving Agency (veterans' benefit programs) and Academic Affairs and Licensing Division
O			1.2.4	Provide for the efficient and effective management of licensing of non-public postsecondary education programs and responsibilities as the State Approving Agency
G	2			Improve <u>Affordability and Accessibility</u> of South Carolina Higher Education Programs and Services
S		2.1		Strengthen Existing and/or Develop New Funding Models to Sustain Public Higher Education in South Carolina
O			2.1.1	Engage the legislatively mandated Efficiency Studies Review Committee in seeking systemic approaches to higher education cost savings and economies
O			2.1.2	Seek state appropriations to encourage funding innovations by institutions that increase college affordability for students
O			2.1.3	Seek executive, legislative, and institutional support for adherence to statutory requirements of §59-103-35
O			2.1.4	Seek executive, legislative, and institutional support for a bond bill or infrastructure bank to achieve economical financing of capital projects
O			2.1.5	Re-evaluate CHE's membership in the South Carolina Higher Education Foundation
O			2.1.6	Provide for the efficient and effective management of student financial aid and other programs under the purview of CHE that promote affordability and accessibility

Agency Name: SC Commission on Higher Education



Fiscal Year 2014-15
Accountability Report

Agency Code: H03 Section: 011

Strategic Planning Template

NOTE: The Commission held a strategic planning session in fall 2014 that resulted in the following strategic agenda that was approved in October 2014. The strategic objectives and targets identified by the Commission are organized below under three broadly stated goals. Objectives related to management of programs (1.2.4, 2.1.6, and 3.1.6) have been added as under the appropriate strategy.

Type	Goal	Item # Strat	Object	Description
S		2.2		Align SC's Higher Education Resources to Meet Current and Future Needs of the State Most Effectively and Efficiently
O		2.2.1		<i>Initiate a study of SC's higher education resources with recommendations to identify their most effective deployment in support of state needs</i>
O		2.2.2		<i>Investigate the need to revise statutory sector definitions for SC's public colleges and universities</i>
O		2.2.3		<i>Work with partner agencies and organizations to integrate workforce needs assessment into long-term statewide planning</i>
O		2.2.4		<i>[See also Item 2.1.1--Efficiency Studies]</i>
G	3			Foster <u>Collaboration</u> to Strengthen Higher Education's Value to the State's Economic Growth and Human Development
S		3.1		Improve Collaboration among All Tiers of the State's Education Enterprise from Pre-K through College/Career
O		3.1.1		<i>Work through the Council of P-20 Agency Heads to coordinate key objectives of participating agencies</i>
O		3.1.2		<i>Continue to strengthen communications between CHE and SDE/SBE at board, executive, and staff levels</i>
O		3.1.3		<i>Work with SDE to align new K-12 college readiness standards with institutional admissions and math/English placement</i>
O		3.1.4		<i>Work with SDE to develop college-ready remediation strategies prior to high school graduation and establish consequences for unsatisfactory institutional performance</i>
O		3.1.5		<i>Coordinate forums to provide continuing education opportunities for institutional trustees to promote collaboration and sharing of best practices</i>
O		3.1.6		<i>Provide for the efficient and effective management for programs under CHE's purview that promote higher education attainment and foster collaborations of higher education and external stakeholders to improve programs and services</i>