



# House Ways & Means Healthcare Subcommittee Presentation

January 24, 2023

# SC DMH Agency Attendees



- Robert Bank, MD, Acting State Director
- Deborah Blalock, Deputy Director, Community Mental Health Services
- Versie Bellamy, DNP, Deputy Director, Inpatient Services
- Debbie Calcote, Acting Deputy Director, Administrative Services
- Elizabeth Hutto, General Counsel
- Lee Bodie, Acting Chief Financial Officer
- Mark Binkley, Executive Project Manager
- Robin Crawford, Legislative Liaison

# SC DMH Overview

SCDMH operates 16 mental health centers with locations in 46 counties, two Psychiatric hospitals, one hospital for addictive disease treatment, the state's Sexually Violent Predator program, and 6 nursing homes including 5 veterans' nursing homes. All centers, hospitals, and nursing homes are accredited by respective national accreditation and licensing bodies.

"The State of Mental Health in America 2023," published by Mental Health America ranked states' access to mental health care based on data from 2019 to 2020. South Carolina ranked the fifteenth best among the 50 states.

In Fiscal Year 2022, SCDMH served 94,666 individuals. 92,045 adults and children were served by a mental health center. 2,621 adults, children and elderly were served in hospitals and nursing homes.

SCDMH's Telepsychiatry Program serves 27 Emergency Departments and its 16 mental health centers' offices and community locations. In FY22, 73,910 telepsychiatry services were provided, 9,048 in Emergency Departments, and 64,862 in mental health centers/community sites.

Transition Specialists working in collaboration with Bryan and Harris Psychiatric Hospitals, facilitated the discharge to community living and treatment for 112 adults in FY22. The average length of inpatient hospitalization for this cohort was 2 years.

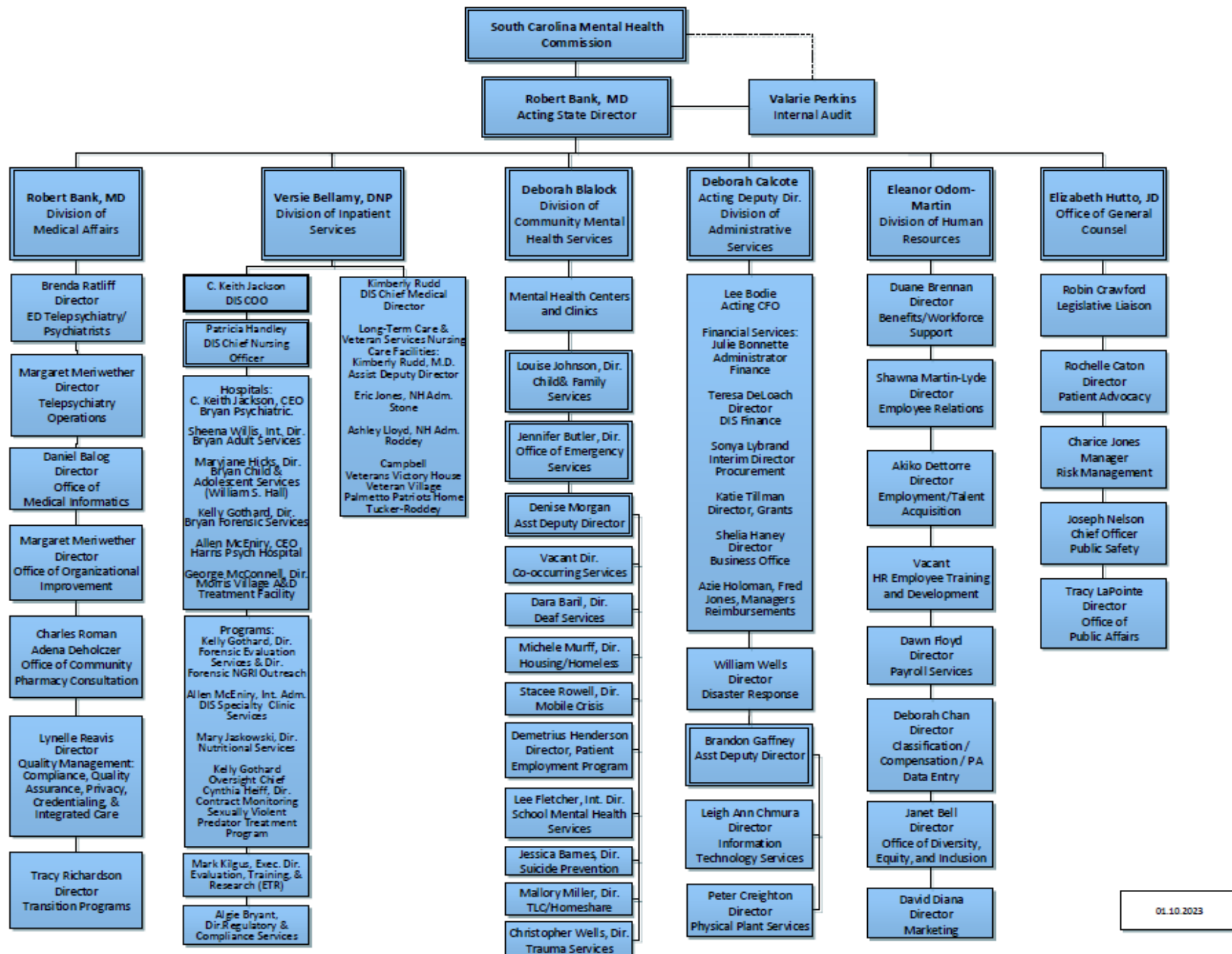
Across the state, SCDMH mental health professionals are embedded in 19 law enforcement agencies and 10 mental health professionals are embedded in county jails.

The Forensic Hospital waiting list has decreased substantially since the inception of outpatient and jail based competency restoration in July 2022.

SCDMH's community mental health centers are the only system in the country which develop a safety plan for every adult and child served to support suicide prevention.

In Fiscal Year 2022, the state-wide Mobile Crisis network received 26,820 calls about individuals with acute mental health needs. 3,357 of these calls resulted in dispatch/responding to community settings. 1,835 of the individuals seen were diverted from Emergency Departments, jails and psychiatric hospitals and referred to other types of community based services.

# S.C. Department of Mental Health Organization Chart



01.10.2023

# SC DMH FTE Breakdown

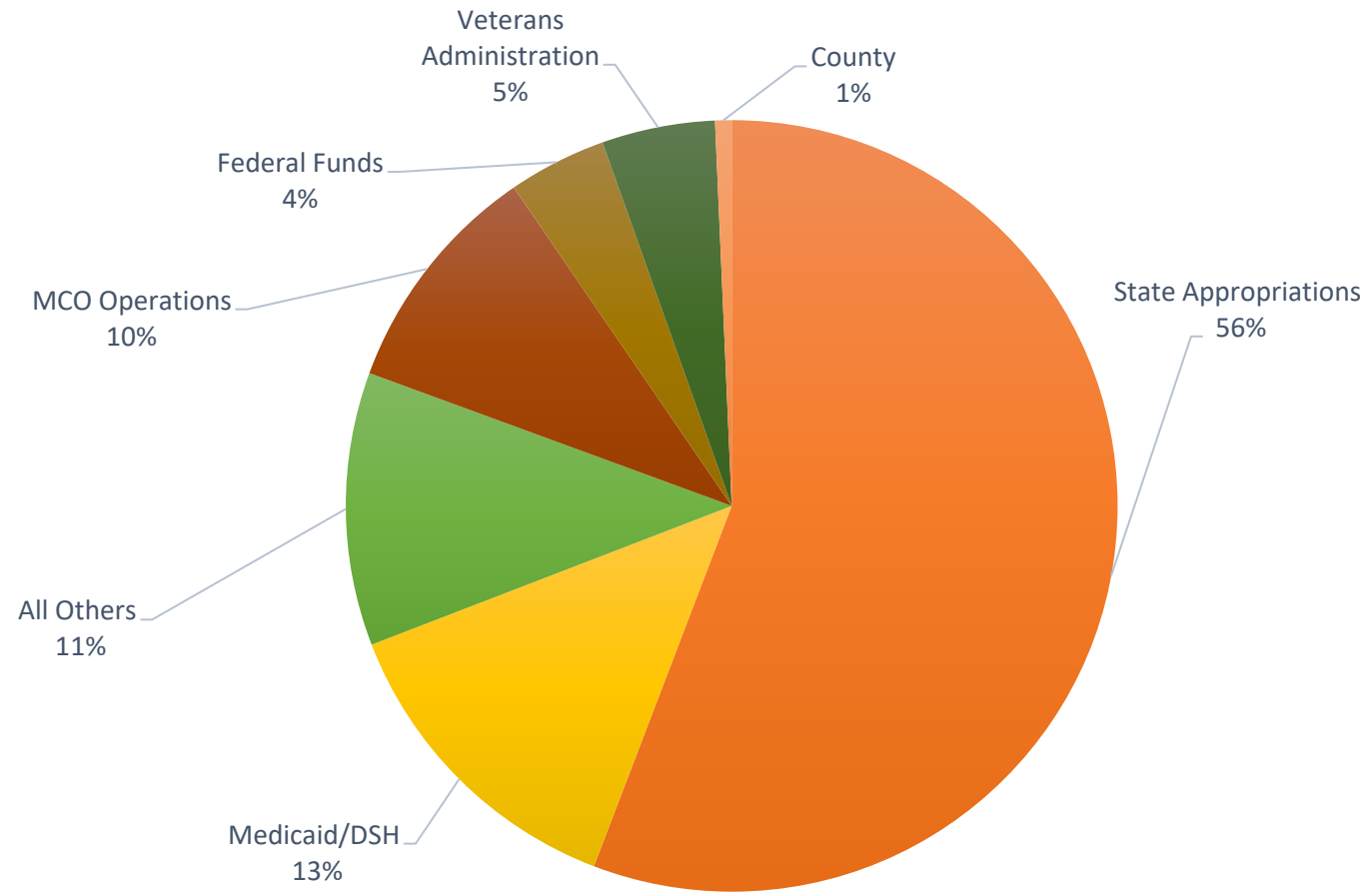
J120 Department of Mental Health (report date: 12/31/2022)

<b>State FTEs</b>	3,120.46	<b>State Filled</b>	2,421.93	<b>State Vacant</b>	698.53
<b>Federal FTEs</b>	134.81	<b>Federal Filled</b>	95.29	<b>Federal Vacant</b>	39.52
<b>Other FTEs</b>	1,371.43	<b>Other Filled</b>	1,027.33	<b>Other Vacant</b>	344.1
<b>Total FTEs</b>	4,626.70	<b>Total Filled FTEs</b>	3,544.55	<b>Total Vacant FTEs</b>	1,082.15
		<b>Total Salary</b>	<b>\$232,284,724.88</b>		

# SC DMH Funding Streams

	FY22 YE	%
State Appropriations	287,069,315	56%
Medicaid/DSH	68,581,917	13%
All Others	58,899,120	11%
Medicaid MCO Operations	50,693,293	10%
Federal Grant Funds	21,175,256	4%
Veterans Administration	24,389,106	5%
County	3,550,765	1%
<b>Total Revenue</b>	<b>514,358,772</b>	<b>100%</b>

## FY2022 Operating Budget



All Others Includes: Patient Fee, Other Fees, Drug Fines, Earmark Grant, Other Revenues, Prior Year Carry Forward, Cares Act, and Community Bed Day Funding

# SC DMH FY24 Budget Requests

## Community Mental Health Services

### **\$10,740,000 – Mental Health Professionals Salary Increase**

Allows DMH to increase starting salaries by an average of up to 25% to allow the agency to compete with other employers to recruit and retain Master's prepared Mental Health Professionals (MHPs), who provide the vast majority of the agency's community mental health services.

### **\$8,508,000 – 988 Crisis Continuum of Care**

- **988 Suicide Prevention Lifeline Call Center - \$2,208,000**  
Supports the continuous operations of a secondary call center in Charleston, adequately staffed by specially trained individuals, and ensure that all 988 calls, texts, and messages are answered in-state
- **Mobile Crisis Dispatch and Response Teams - \$4,800,000**  
Expansion of the statewide Mobile Crisis program which provides telephonic, telehealth, and in-person emergency assessments 24/7/365 in all 46 counties
- **Crisis Stabilization Units and Crisis Receiving Units - \$1,500,00**  
Allows for operation of new short-term residential psychiatric programs where non-violent persons in a behavioral crisis can be cared for and safely assessed, generally as a more appropriate and less expensive alternative to a hospital emergency department or inpatient psychiatric hospital unit.

# SC DMH FY24 Budget Requests (Continued)

## **\$4,000,000 – Alternative Transportation**

Allows DMH to continue the pilot program for transporting non-violent adults subject to an involuntary psychiatric emergency admission without the need to use law enforcement for some patient transports.

## **\$648,000 – Office of Suicide Prevention**

Supports the critical and important suicide prevention efforts of the suicide prevention program, aiming to reduce suicide rates among youth and young adults.

## **\$790,000 – Assertive Community Treatment**

Allows DMH to continue its practice with this proven multi-disciplinary team approach which is highly successful for the sub-set of patients who are most risk of involvement in the criminal justice system or hospitalization but are not ready engage in clinic-based treatment.



# SC DMH FY24 Budget Requests (Continued)

## Inpatient Services

### **\$7,310,000 – Restoring and Sustaining Hospital and Long-Term Care Services**

Allows DMH to increase starting salaries by an average of up to 25% to allow the agency to compete with other employers to recruit and retain clinical and support staff including Nurses, Certified Nursing Assistants, LPNs, Behavioral Health Assistants, Lab and Pharmacy Techs, Food and Environmental Services, Building Maintenance staff, and others who are critical to ensuring the health and safety of patients in hospitals and vulnerable residents in nursing homes.

### **\$5,430,000 – Expansion of Bed Capacity**

Allows DMH to increase available bed capacity at Bryan Psychiatric Hospital by 24 beds to an average daily census of 136. This request represents the cost to hire the needed additional staff to care for those patients.

### **\$10,000,000 – Contracted Community Beds**

DMH contracts with community and private hospitals to pay for indigent patients' psychiatric hospital admissions, giving those hospitals the ability to increase the number of indigent patients they care for, and alleviating hospital emergency departments around the state from holding patients while they wait on acceptance into available beds.

# SC DMH FY24 Budget Requests (Continued)

## **\$900,000 – State Operated Intensive Group Home**

Allows DMH to create and operate a Group Home with intensive therapeutic services to serve adolescents in State care or custody, frequently from DJJ, who because of past behaviors are not accepted for services in the State's privately operated licensed Group Homes.

## **\$318,000 – DMH Medical Clinic**

Allows DMH to continue operation of its Medical Clinic in Columbia which houses an employee health clinic and specialty ambulatory health care services for patients of the Department's psychiatric hospitals.

# SC DMH FY24 Budget Requests (Continued)

## State Veterans Nursing Homes/Long-term Care

### **\$8,840,000 – State Nursing Homes**

Please note that there are pending rate increase requests for all of the contractually operated State Veterans Nursing Homes. The amounts in red will increase, but the amount of the increases is still being determined.

- Campbell State Veterans Nursing Home (Anderson) - **\$3,092,000**
- Veteran Village Veterans Nursing Home (Florence) - **\$1,574,000**
- Palmetto Patriots Veterans Nursing Home (Gaffney) - **\$1,339,000**
- C.M. Tucker Nursing Care Center – Stone Veterans Pavilion - \$920,000
- C.M. Tucker Nursing Care Center – Roddey Pavilion - \$1,915,000

# SC DMH FY24 Budget Requests (Continued)

## Sexually Violent Predator Treatment Program

### **\$1,455,000 – Sexually Violent Predator Treatment Program (SVPTP)**

- **Annual Increase for Contracted Management, Staffing, and Operation - \$1,360,355**  
This figure includes a 3% projected increase in the average daily census based on trends; a request of additional funds due to a rising census in the program and associated contractual obligations of \$215,555; and a contractual annual rate increase based on the South Region Medical Services CPI cost increase of 5.2% or \$1,145,400.
- **Increase in Direct Expenses - \$94,345**  
Includes contract oversight staff, building utilities, and supplies

# SC DMH FY24 Proviso Requests

## Elimination of Remittances

DMH requests removing the requirement to send \$290,963 of its earned revenue to the General Fund, as directed in Proviso 35.1. Elimination of this requirement will allow the Department to spend its earned revenue on DMH operations.

DMH also requests removing the requirement to send \$400,000 of its earned revenue to the Continuum of Care, as directed in Proviso 35.1. Elimination of this requirement will allow the Department to spend its earned revenue on DMH operations. DMH understands the Department of Child Advocacy will submit a budget request supporting the elimination of the transfer of funding from DMH to Continuum of Care out of agency patient fee revenues and request replacement funding in the form recurring state appropriations.

35.1 (DMH: Patient Fee Account) The Department of Mental Health is hereby authorized to retain and expend its Patient Fee Account funds. In addition to funds collected for the maintenance and medical care for patients, Medicare funds collected by the department from patients' Medicare benefits and funds collected by the department from its veteran facilities shall be considered as patient fees. The department is authorized to expend these funds for departmental operations, for capital improvements and debt service under the provisions of Act 1276 of 1970, and for the cost of patients' Medicare Part B premiums. The department shall remit ~~\$290,963 to the General Fund, \$400,000 to the Continuum of Care~~, \$50,000 to the Alliance for the Mentally Ill, and \$250,000 to S.C. Share Self Help Association Regarding Emotions.

# SC DMH FY24 Proviso Requests (Continued)

## **One-time Amendment to SVP Lease Payments Proviso**

DMH requests a one-time amendment to authorize its receipt of Excess Lease Funds in accordance with its Agreement with the SFAA arising from the issuance of Lease Revenue bonds to fund the construction of the buildings housing the Sexually Violent Predator Treatment Program.

35.8 (DMH: Lease Payments to SFAA for SVP Program; Excess Lease Funds) In the current fiscal year, funds appropriated and authorized to the Department of Mental Health for Lease Payments to the State Fiscal Accountability Authority for the Sexually Violent Predator Program are exempt from any across-the-board base reductions. In accordance with the Lease and Use Agreement between the Department of Mental Health and the State Fiscal Accountability Authority, the Department is authorized to receive excess lease funds in the amount of \$1,914,471.41 and utilize such funds for the Department's deferred maintenance, capital projects, ordinary repair and maintenance.

# SC DMH FY24 Proviso Requests (Continued)

## ISCEDC Proviso 117.51

DMH requests to permanently transfer \$595,000 in recurring appropriations to the Department of Social Services and eliminate reference to the Department of Mental Health within Proviso 117.51.

117.51. (GP: ISCEDC Funding Transfer) The departments of ~~Mental Health~~, Disabilities and Special Needs, and Juvenile Justice are directed to transfer a total of ~~\$1,199,456~~ \$604,456 in funds to the Department of Social Services for the support of the Interagency System for Caring for Emotionally Disturbed Children. Funding transfers shall be in the following amounts: ~~Department of Mental Health - \$595,000~~, Department of Disabilities and Special Needs - \$379,456, and Department of Juvenile Justice - \$225,000. The transfer of funds shall be accomplished by September thirtieth of the current fiscal year.

**Permanent Transfer to DHHS for School Mental Health Funding** **\$(5,700,000)**

*[Note: For the first time in at least 20 years, SCDMH is not including any of its capital needs in its annual budget request. Due to the historically large number of vacant positions, the Department has accumulated a substantial amount of carry forward funding that it is using to address its deferred maintenance and capital needs.]*

# Carry Forward Funds

## South Carolina Enterprise Information System Available Cash Report Year to Date (404)

FY 2022

Run Date: 8/25/2022-11:00 AM

Source: Available Cash by Fund by Fiscal Year  
(with CPST Acts)

J120 MENTAL HEALTH DEPT

1000000 GENERAL FUND

01 GENERAL FUND

FY Fund Mid Level Info	Fund - Key	Fund	Beginning Cash	Cash Receipts	Net Transfers	Cash Disbursements	Net Balance Sheet Activity	Ending Balance
1001 GENERAL FUND	10010000	GENERAL FUND	\$0.00		\$326,644,935.97	(\$328,713,829.45)	\$2,068,893.48	\$0.00
	10010001	CRISIS STABILIZATION	\$0.00		\$3,223,681.07	(\$3,223,954.44)	\$273.37	\$0.00
	10010002	COMMUNITY HOUSING	\$0.00		\$2,119,753.63	(\$2,119,753.63)	\$0.00	\$0.00
	10010003	ACT PROGRAMS	\$0.00				\$0.00	\$0.00
	10010004	CRISIS COMMUNITY BED	\$0.00		\$2,660,875.49	(\$2,660,875.49)	\$0.00	\$0.00
	10010005	INTENSIVE FAMILY SRV	\$0.00			(\$96,549.60)	\$96,549.60	\$0.00
	10010006	ENHANCED ADULT SERV	\$0.00			(\$119,382.90)	\$119,382.90	\$0.00
	10010022	CRISIS OUTREACH	\$0.00		\$2,029,979.08	(\$2,029,979.08)	\$0.00	\$0.00
	10010023	UNCOMPNSD PNT CARE	\$0.00		\$750,000.00	(\$750,000.00)	\$0.00	\$0.00
	10010025	SCHOOL MENTAL HEALTH	\$0.00		\$6,138,441.73	(\$6,138,441.73)	\$0.00	\$0.00
	10010028	IPS (INDV PLACEMENT)	\$0.00				\$0.00	\$0.00
1002 GF DONATED ASSETS	10020000	GF DONATED ASSETS	\$0.00	\$4,999.00		(\$9,998.00)	\$4,999.00	\$0.00
<b>01 GENERAL FUND Total:</b>			<b>\$0.00</b>	<b>\$4,999.00</b>	<b>\$343,567,666.97</b>	<b>(\$345,862,764.32)</b>	<b>\$2,290,098.35</b>	<b>\$0.00</b>



# COVID/Federal Relief Funds

## South Carolina Department of Mental Health Federal Relief Funds Summary as of 12/31/2022

### Relief Funds Received

Amount	Date Received	Date Required to be Spent	Relief Bill or Fed Grant Title	Summary of Need/Use	Spent	Remaining
\$311,558.34	6/2/2020	8/29/2020	Crisis Counseling Assistance and Training Program (CCP)	The CCP is a short-term disaster relief grant for states, U.S. territories, and federally recognized tribes. CCP grants are awarded after a presidential disaster declaration. CCP funding supports community-based outreach, counseling, and other mental health services to survivors of natural and human-caused disasters.	\$75,696.68	\$235,861.66
\$52,052.00	8/26/2020	12/31/2020	Coronavirus Emergency Supplemental Funding Program	Projects funded under the CESF Program must have a nexus to criminal justice and be utilized to prevent, prepare for, and respond to the coronavirus. Allowable projects and purchases include, but are not limited to, overtime, equipment (including law enforcement and medical personal protective equipment), hiring, supplies (such as gloves, masks, sanitizer), training, travel expenses (particularly related to the distribution of resources to the most impacted areas), and addressing the medical needs of inmates in state, local, and tribal prisons, jails, and detention centers.	\$52,052.00	\$0.00
\$7,500.00	4/29/2020	4/30/2021	South Carolina Hospital Association COVID-19 Preparedness & Response	The COVID-19 Preparedness and Response Program seeks to support the urgent preparedness and response needs of hospitals and health systems using funds appropriated pursuant to the Coronavirus Preparedness and Response Supplemental Appropriations Act and Public Health Service Act (the "Grant Program Legislation"). ASPR has awarded Program funds to hospital associations across the country, which are authorized to distribute these funds to hospitals and health systems in their respective states.	\$7,500.00	\$0.00
\$7,500.00	10/7/2020	8/31/2021	South Carolina Hospital Association COVID-19 Preparedness & Response	The COVID-19 Preparedness and Response Program seeks to support the urgent preparedness and response needs of hospitals and health systems using funds appropriated pursuant to the Coronavirus Preparedness and Response Supplemental Appropriations Act and Public Health Service Act (the "Grant Program Legislation"). ASPR has awarded Program funds to hospital associations across the country, which are authorized to distribute these funds to hospitals and health systems in their respective states.	\$7,500.00	\$0.00

# COVID/Federal Relief Funds (Continued)

## South Carolina Department of Mental Health Federal Relief Funds Summary as of 12/31/2022

### Relief Funds Received

Amount	Date Received	Date Required to be Spent	Relief Bill or Fed Grant Title	Summary of Need/Use	Spent	Remaining
\$3,599,353.00	9/10/2020	6/13/2021	RSP – Crisis, Counseling, Assistance and Training Program	The RSP is a CCP grant program that provides disaster relief and crisis counseling services for up to 9 months after a Presidential disaster declaration that includes Individual Assistance. State, territory, and tribal governments are eligible to apply. In their applications, which must be submitted within 60 days of the disaster declaration, state, territory, and tribal governments need to show a continuing need for services.	\$853,620.81	\$2,745,732.19
\$3,375.00	10/08/2020	9/30/2022	Coronavirus Emergency Supplemental Funding Program	Projects funded under the CESF Program must have a nexus to criminal justice and be utilized to prevent, prepare for, and respond to the coronavirus. Allowable projects and purchases include, but are not limited to, overtime, equipment (including law enforcement and medical personal protective equipment), hiring, supplies (such as gloves, masks, sanitizer), training, travel expenses (particularly related to the distribution of resources to the most impacted areas), and addressing the medical needs of inmates in state, local, and tribal prisons, jails, and detention centers.	\$3,375.00	\$0.00
\$1,982,692.00	4/16/2020	5/31/2023	SCDMH COVID-19 Crisis Response Initiative (SC HOPES)	For the purposes of this grant award, SCDMH intends to focus specific attention on the following groups of South Carolina citizens who may or may not have previously been known to the behavioral health system and who are affected by the COVID-19 pandemic: •Serious Mental Illness (SMI) and/or Substance Use Disorder (SUD); •Mental Illness (MI); •Justice-Involved Population Returning to Society who have SMI or MI; and •Healthcare Workers experiencing MI or lesser mental health disorders.	\$1,374,992.86	\$607,699.14
\$14,017,000.00	5/7/2021		State Veterans Home under the Coronavirus Aid, Relief, and Economic Security Act (CARES Act) – Fewell Pavilion	To specifically modify the Fewell Pavilion to serve as a COVID-19 isolation and quarantine area, for veterans in the Stone State Veterans Nursing Home	\$8,505,775.39	\$5,511,224.61

# COVID/Federal Relief Funds (Continued)

## South Carolina Department of Mental Health Federal Relief Funds Summary as of 12/31/2022

### Relief Funds Received

Amount	Date Received	Date Required to be Spent	Relief Bill or Fed Grant Title	Summary of Need/Use	Spent	Remaining
\$12,436,240.00	3/11/2021	3/14/2024	Block Grants for Community Mental Health Services-CARES Act	Programs for prevention, treatment, recovery support, and other services to supplement Medicaid, Medicare, and private insurance services. *Fund priority treatment and support services for individuals without insurance or for whom coverage is terminated for short periods of time. *Fund those priority treatment and support services that demonstrate success in improving outcomes and/or supporting recovery that are not covered by Medicaid, Medicare, or private insurance. *Fund primary prevention by providing universal, selective, and indicated prevention activities and services for persons not identified as needing treatment *Collect performance and outcome data to determine the ongoing effectiveness of behavioral health promotion, treatment, and recovery support services.	\$143,710.95	\$12,292,529.05
\$2,834,901.00	3/19/2021	5/31/2023	SCDMH COVID-19 Crisis Response Initiative (SC HOPES)	This project is considered output-related. The overarching goal the agency intends to achieve is to mitigate the impact of trauma caused by the COVID-19 pandemic by providing a statewide system of expanded services and community support based in evidence-based psychosocial interventions to those affected South Carolinians. In partnership with DAODAS, SCDMH will track these affected persons and the services they have been provided by (1) tabulating the number of callers to the CCP line and applicable callers to the CCRI line, (2) tracking the number of persons receiving HOT services, (3) tracking the number of persons in the JI population who receive services and financial assistance under the initiative, and (4) tracking the number of persons receiving financial assistance under the initiative who have SMI, MI, and or SUD who are not part of the JI population. SCDMH's ONIT will develop a flagging mechanism within our electronic medical record system that will enable an SCDMH provider to denote that services are being requested by or provided to a COVID-19 related patient	\$1,807,010.82	\$1,027,890.18
\$45,952.00	3/16/2022	3/31/2023	Charleston Dorchester Mental Health Center Clinician Program	The ARP funding is for Dorchester County to provide funding to cover the salary for one full time clinician which will remain an employee of CMHC.	\$19,511.66	\$26,440.34
\$739,233.00	8/10/2021	9/30/2025	Block Grants for Community Mental Health Services-Mitigation	Programs for prevention, treatment, recovery support, and other services to supplement Medicaid, Medicare, and private insurance services. *Fund priority treatment and support services for individuals without insurance or for whom coverage is terminated for short periods of time. *Fund those priority treatment and support services that demonstrate success in improving outcomes and/or supporting recovery that are not covered by Medicaid, Medicare, or private insurance. *Fund primary prevention by providing universal, selective, and indicated prevention activities and services for persons not identified as needing treatment *Collect performance and outcome data to determine the ongoing effectiveness of behavioral health promotion, treatment, and recovery support services, and related to the mitigation of COVID-19.	\$25,531.55	\$713,701.45

# COVID/Federal Relief Funds (Continued)

## South Carolina Department of Mental Health Federal Relief Funds Summary as of 12/31/2022

### Relief Funds Received

Amount	Date Received	Date Required to be Spent	Relief Bill or Fed Grant Title	Summary of Need/Use	Spent	Remaining
\$21,480,779.00	5/17/2021	9/30/2025	Block Grants for Community Mental Health Services- ARPA	Programs for prevention, treatment, recovery support, and other services to supplement Medicaid, Medicare, and private insurance services. *Fund priority treatment and support services for individuals without insurance or for whom coverage is terminated for short periods of time. *Fund those priority treatment and support services that demonstrate success in improving outcomes and/or supporting recovery that are not covered by Medicaid, Medicare, or private insurance. *Fund primary prevention by providing universal, selective, and indicated prevention activities and services for persons not identified as needing treatment *Collect performance and outcome data to determine the ongoing effectiveness of behavioral health promotion, treatment, and recovery support services.	\$2,696,921.79	\$18,783,857.21
\$445,000.00	8/18/2021	9/29/2022	American Rescue Plan Act- Pediatric Mental Health Care Access New Area Expansion	This funding is to expand the Pediatric Mental Health Care Access Program into new states and geographic areas. Newly expanded state or regional networks of pediatric mental health care teams will provide tele-consultation, training, technical assistance, and care coordination for pediatric primary care providers to diagnose, treat, and refer children with behavioral health conditions. For the purposes of this funding, telehealth is defined as the use of electronic information and telecommunication technologies to support and promote clinical consultation, patient and professional health-related education, public health, and health administration activities.	\$136,953.92	\$308,046.08
\$445,000.00	8/12/2022	9/29/2023	American Rescue Plan Act- Pediatric Mental Health Care Access New Area Expansion	This funding is to expand the Pediatric Mental Health Care Access Program into new states and geographic areas. Newly expanded state or regional networks of pediatric mental health care teams will provide tele-consultation, training, technical assistance, and care coordination for pediatric primary care providers to diagnose, treat, and refer children with behavioral health conditions. For the purposes of this funding, telehealth is defined as the use of electronic information and telecommunication technologies to support and promote clinical consultation, patient and professional health-related education, public health, and health administration activities.	\$39,205.33	\$405,794.67
\$135,000.00	10/20/2023	6/30/2023	Richland County/CMHC Highway to Hope	Mental Health Services (SMHS) provider across SC. SMHS provides school children diagnostic services, intervention services, and a range of treatments including individual, group, and family therapy. As a result of COVID-19, the demand for mental health services for students has increased significantly. However, the number of clinicians available to meet those needs is not sufficient. Several schools around the state have rarely had enough clinicians to meet the demand, so the pandemic has exacerbated the problem. Additionally, many mental health clinicians currently serving in schools have indicated that they are preparing to leave the field. This one-time funding provides for the ability to assist and facilitate efforts by the DMH to stabilize its current SMH workforce.	\$9,589.84	\$125,410.16

# COVID/Federal Relief Funds (Continued)

South Carolina Department of Mental Health Federal Relief Funds Summary as of 12/31/2022						
Relief Funds Received						
Amount	Date Received	Date Required to be Spent	Relief Bill or Fed Grant Title	Summary of Need/Use	Spent	Remaining
\$648,000.00	12/19/2022	12/31/2022	SC Department of Ed – ESSER Funds	Mental Health Services (SMHS) provider across South Carolina. SMHS provides school children diagnostic services, intervention services, and a range of treatments including individual, group, and family therapy. As a result of COVID-19, the demand for mental health services for students has increased significantly. However, the number of clinicians available to meet those needs is not sufficient. Several schools around the state have rarely had enough clinicians to meet the demand, so the pandemic has exacerbated the problem. Additionally, many mental health clinicians currently serving in schools have indicated that they are preparing to leave the field. The goal of this agreement, then, is to provide one-time funding to assist and facilitate efforts by the DMH to stabilize its current SMH workforce.	\$0.00	\$648,000.00
\$4,037,673.41	3/1/2020	12/30/2020	Coronavirus Relief Funds (Guide house)	The State of South Carolina has received funds pursuant to the CARES Act. The CARES Act established the Coronavirus Relief Fund (CRF) and the State of South Carolina received an allocation of funds from the CRF under section 601 (a) of the Social Security Act, as added by section 5001 of the CARES Act. The State of South Carolina has elected to distribute funding from the CRF to eligible subrecipients. Subrecipients may include, but are not limited to state agencies, municipalities, counties, higher education institutions, technical colleges, hospitals, and special purpose districts within the State of South Carolina. Subrecipients may request reimbursement for expenditures made as a result of COVID-19 pursuant to the procedures defined in this Agreement or subsequently defined in program policies and procedures or guidance issued by the State. Requests will be reviewed by the State of South Carolina/or eligibility before reimbursements are issued.	\$4,037,673.41	\$0.00
\$19,130,340.42	4/10/2020	Dates Vary	HRSA Provider Relief Fund	PRF and ARP Rural recipients must only use payments for eligible expenses, including services rendered and lost revenues (up to the end of the Public Health Emergency), during the period of availability. The period of availability of funds is based on the date the payment is received. The payment is received on the deposit date for automated clearing house (ACH) payments or the check cashed date. Providers must follow their basis of accounting (e.g., cash, accrual, or modified accrual) to determine expenses.	\$9,547,856.89	\$9,582,483.53