

AGENCY NAME:	Lander University		
AGENCY CODE:	H210	SECTION:	018

**2022
Accountability Report**

SUBMISSION FORM

I have reviewed and approved the data submitted by the agency in the following templates:

- Data Template
 - Reorganization and Compliance
 - FY2022 Strategic Plan Results
 - FY2023 Strategic Plan Development
 - Legal
 - Services
 - Partnerships
 - Report or Review
 - Budget
- Discussion Template
- Organizational Template

I have reviewed and approved the financial report summarizing the agency’s budget and actual expenditures, as entered by the agency into the South Carolina Enterprise Information System.

The information submitted is complete and accurate to the extent of my knowledge.

AGENCY DIRECTOR <i>(SIGN AND DATE):</i> <i>(TYPE/PRINT NAME):</i>	SIGNATURE ON FILE	Signature Received: 9/15/2022 14:42
	Richard Cosentino	

BOARD/CMSN CHAIR <i>(SIGN AND DATE):</i> <i>(TYPE/PRINT NAME):</i>	SIGNATURE ON FILE	Signature Received: 9/15/2022 14:42
	Donald H. Scott	

AGENCY NAME:	Lander University		
AGENCY CODE:	H210	SECTION:	018

AGENCY'S DISCUSSION AND ANALYSIS

LANDER UNIVERSITY

9/15/2022.

ACCOUNTABILITY REPORT – OUTCOMES FOR FY2022

(JULY 1, 2021 – JUNE 30, 2022)

1. Increased the number of students enrolled in 100% online programs by 59%, exceeding target of a 31% increase in enrollment.
2. Increased total enrollment of undergraduate and graduate students by 7%, exceeding target of a 3% increase in enrollment.
3. Introduced one new healthy food venue, Freshens, by start of Fall 2022 classes, meeting target deadline.
4. Increased employee compensation by 4.5% over the previous fiscal year, exceeding target of a 1.5% increase in compensation.
5. Recruited a new full-time faculty role, the *Assistant Provost of Faculty Development, Teaching and Learning*, developed to provide training and support for faculty in all modes of instruction, meeting target deadline for recruitment for the 2021-22 academic year.
6. Increased the number of full-time faculty by 14%.
7. Increased the number of full-time staff by 5%.
8. Introduced at least one new 100% Online bachelor's degree option (Psychology) in the Spring of 2022, meeting target.
9. Developed and approved the following five new high-demand, market-driven programs, meeting program development and approval targets for 2021-22 academic year:
 - Bachelor of Arts (BA), Entrepreneurship
 - Bachelor of Science (BS), Cybersecurity
 - Bachelor of Science (BS), Data Science
 - Master of Arts in Teaching (MAT), Visual Art K-12
 - Master of Business Administration (MBA)

AGENCY NAME:

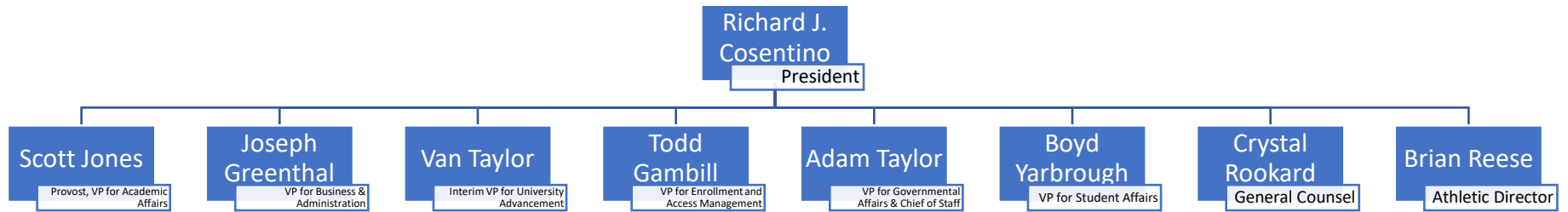
Lander University

AGENCY CODE:

H210

SECTION:

018



AGENCY NAME:

Lander University

AGENCY CODE:

H21

SECTION:

Scott Jones

Provost, VP for Academic Affairs

James Colbert

Associate Provost

Jennifer Yates

Assistant Provost

Lucas McMillan

Dean

David Slimmer

Dean

Sarah Hunt-Barron

Dean

Mark Rollins

Deam

Holisa Wharton

Dean

Mike Fekula

Dean

Lisa Wiecki

Dir. Library Svs

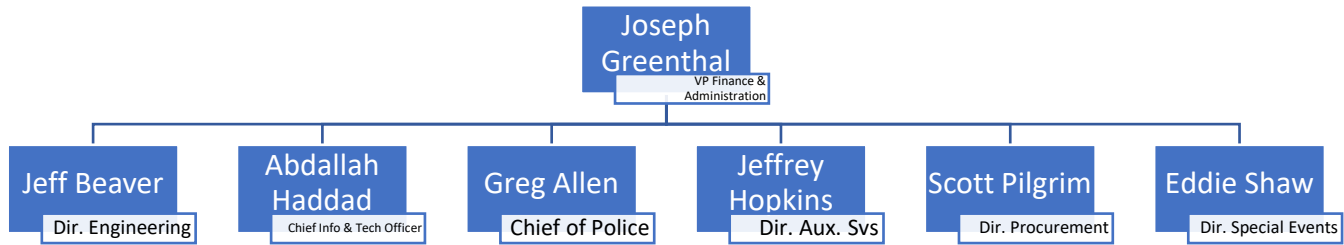
AGENCY NAME:

Lander University

AGENCY CODE:

H21

SECTION:



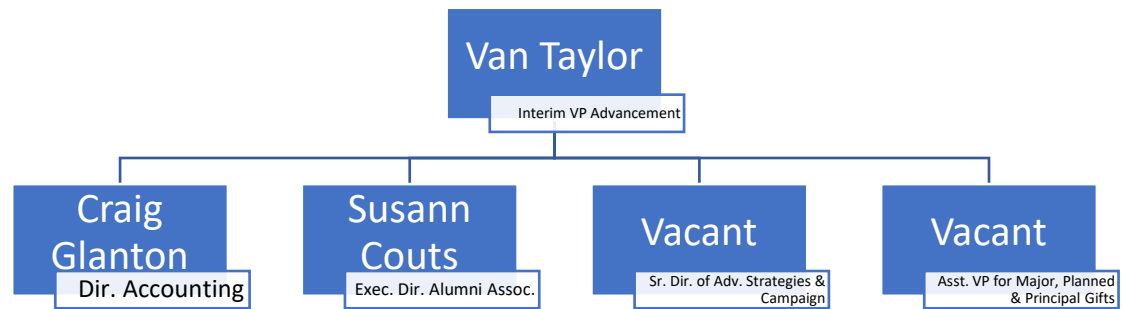
AGENCY NAME:

Lander University

AGENCY CODE:

H21

SECTION:



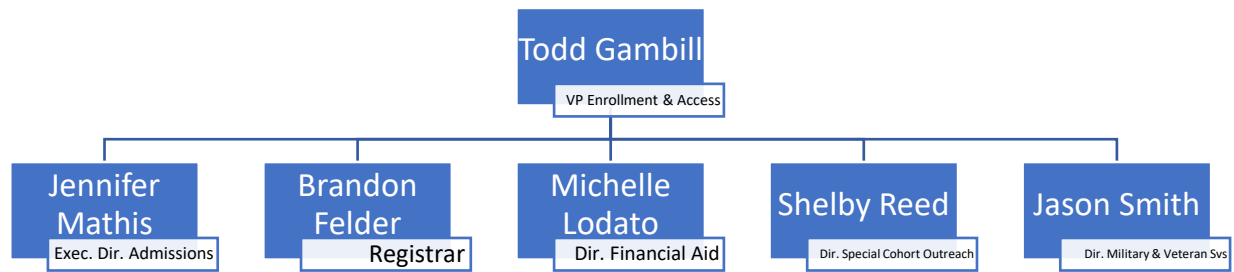
AGENCY NAME:

Lander University

AGENCY CODE:

H21

SECTION:



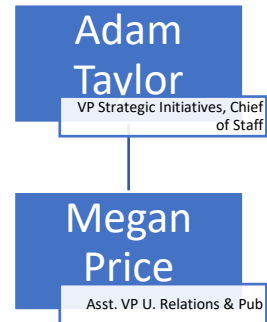
AGENCY NAME:

Lander University

AGENCY CODE:

H21

SECTION:



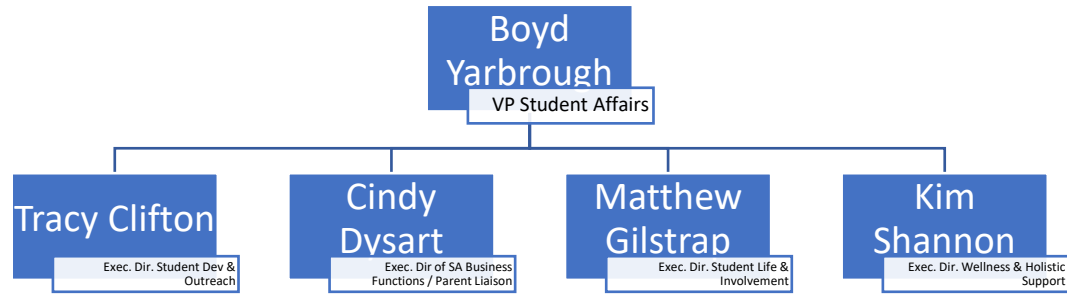
AGENCY NAME:

Lander University

AGENCY CODE:

H21

SECTION:



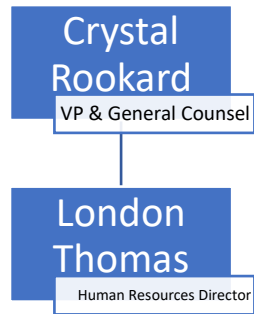
AGENCY NAME:

Lander University

AGENCY CODE:

H21

SECTION:



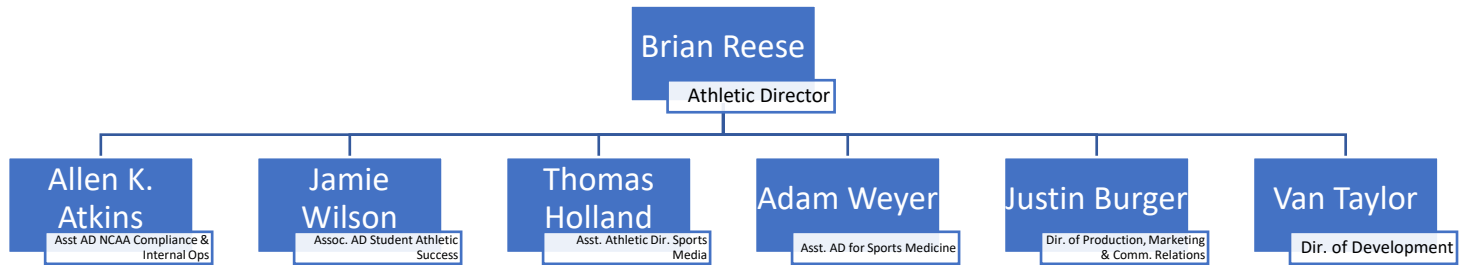
AGENCY NAME:

Lander University

AGENCY CODE:

H21

SECTION:



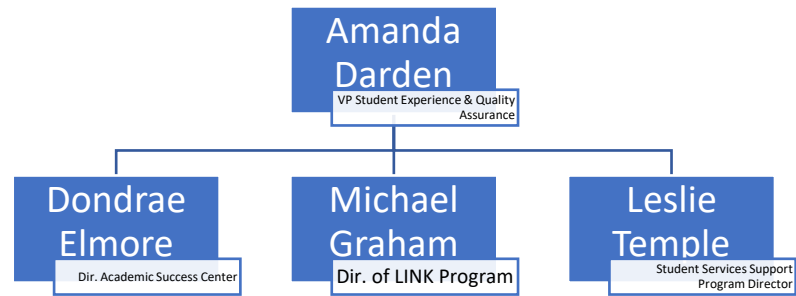
AGENCY NAME:

Lander University

AGENCY CODE:

H21

SECTION:



FY2022

Reorganization and Compliance

as submitted for the Accountability Report by:

H210 - LANDER UNIVERSITY

Primary Contact

First Name	Last Name	Role/Title	Email Address	Phone
Matt	Braaten	AVP Planning, Analytics & Decision-support	mbraaten@lander.edu	864-388-8827

Secondary Contact

First Name	Last Name	Role/Title	Email Address	Phone
Ashley	Wilkie	Budget Director	awilkie@lander.edu	864-388-8305

Agency Mission	Adopted in:
Lander University offers high-demand and market-driven programs to ambitious and talented students in South Carolina and beyond. These programs are delivered in a rich liberal arts environment to produce highly qualified and marketable graduates.	2016

Agency Vision	Adopted in:
All Lander University graduates are broadly educated, well-informed, equipped for responsible participation in the civic lives of their communities, and prepared to continue their education or launch their careers	2021

Recommendations for reorganization requiring legislative change:
None

Agency intentions for other major reorganization to divisions, departments, or programs to allow the agency to operate more effectively and efficiently in the succeeding fiscal year:
None

Significant events related to the agency that occurred in FY2022				
Description of Event	Start	End	Agency Measures Impacted	Other Impacts
There were no significant events, unique to Lander University, that substantively affected the university's ability to meet its performance measures.				

Is the agency in compliance with S.C. Code Ann. § 2-1-220, which requires submission of certain reports to the Legislative Services Agency for publication online and the State Library? (See also S.C. Code Ann. § 60-2-20).
Yes

Reason agency is out of compliance: (if applicable)

Is the agency in compliance with various requirements to transfer its records, including electronic ones, to the Department of Archives and History? See the Public Records Act (S.C. Code Ann. § 20-1-10 through 20-1-180) and the South Carolina Uniform Electronic Transactions Act (S.C. Code Ann. § 26-6-10 through 26-10-210).
Yes

Does the law allow the agency to promulgate regulations?
No

Law number(s) which gives the agency the authority to promulgate regulations:

Has the agency promulgated any regulations?
No

Is the agency in compliance with S.C. Code Ann. § 1-23-120 (J), which requires an agency to conduct a formal review of its regulations every five years?
Yes

(End of Reorganization and Compliance Section)

FY2022

Strategic Plan Results

as submitted for the Accountability Report by:
H210 - LANDER UNIVERSITY

- Goal 1 Selective, Competitive Recruitment and Enrollment of SC Students
- Goal 2 Robust student experience
- Goal 3 Employer of Choice
- Goal 4 Facilities positioned for growth and efficient utilization
- Goal 5 High-demand, Market-driven Programs

Perf. Measure Number	Description	Base	Target	Actual	Value Type	Desired Outcome	Time Applicable	Calculation Method	Data Source	Data Location	Stakeholder Need Satisfied	Primary Stakeholder	State Funded Program Number Responsible	Notes
1.1		Increase the number of students enrolled in programs that are 100% online.												
State Objective: Education, Training, and Human Development														
1.1.1	By Fall 2022, increase the number of students enrolled in programs that are 100% online by 50 students.	163	213	259	Count (whole number)	equal to or greater than	State Fiscal Year (July 1 - June 30).	0	Internal records	Banner ERP (Institutional Research)	Access and support from a South Carolina regional comprehensive university to obtain an undergraduate or graduate degree.	General Public: Students who are high school graduates, veterans, or adults who seek to continue their education or launch their career.	N/A	Increased the number of students enrollment in programs are 100% online by 96 students. (August census comparison from 163 students in Fall 2021 to 259 students in Fall 2022.)
1.2		Increase the total enrollment of undergraduate and graduate students.												
State Objective: Education, Training, and Human Development														
1.2.1	By Fall 2022, increase total headcount of undergraduate and graduate students by 3% (115).	3840	3955	4107	Count (whole number)	equal to or greater than	State Fiscal Year (July 1 - June 30).	0	Internal records	Banner ERP (Institutional Research)	Access and support from a South Carolina regional comprehensive university to obtain an undergraduate or graduate degree.	General Public: Students who are high school graduates, veterans, or adults who seek to continue their education or launch their career.	N/A	Increased total headcount by 7%.
2.1		Continue to introduce new food venues to campus.												
State Objective: Education, Training, and Human Development														
2.1.1	By Fall 2022, introduce at least one new food venue to campus	0%	100%	100%	Percent Complete	complete	State Fiscal Year (July 1 - June 30).	0	Internal records	Business Administration, Dining Services	Access and support from a South Carolina regional comprehensive university to obtain an undergraduate or graduate degree.	General Public: Students who are high school graduates, veterans, or adults who seek to continue their education or launch their career.	N/A	Updated timeline from FY end (June 30, 2022) to Fall 2022 on this performance measure since Lander's objective was to introduce a new food venue to be ready by start of classes in the Fall. "Freshens" was introduced to campus by Fall 2022.
3.1		Continue to increase employee compensation.												
State Objective: Education, Training, and Human Development														
3.1.1	By June 30, 2022, increase employee compensation by at least 1.5%.	0%	100%	100%	Percent	equal to or greater than	State Fiscal Year (July 1 - June 30).	0	Internal records	Business Administration	Access and support from a South Carolina regional comprehensive university to obtain an undergraduate or graduate degree.	General Public: Students who are high school graduates, veterans, or adults who seek to continue their education or launch their career.	N/A	The average salary for all full-time employees in FY2022 was 4.5% higher than the previous fiscal year.
4.1		Increase support for faculty to develop the teaching and course management skills required to excel in all modes of instruction, including online, hybrid, and in-person courses.												
State Objective: Education, Training, and Human Development														
4.1.1	By June 30, 2022, recruit one full-time professional faculty member to provide training and support for faculty in all modes of instruction.	0%	100%	100%	Percent Complete	complete	State Fiscal Year (July 1 - June 30).	0	Internal records	Academic Affairs	Access and support from a South Carolina regional comprehensive university to obtain an undergraduate or graduate degree.	General Public: Students who are high school graduates, veterans, or adults who seek to continue their education or launch their career.	N/A	Hired Dr. Jennifer Yates, Assistant Provost of Faculty Development, Teaching, and Learning on August 15, 2021 to provide training and support for faculty in all modes of instruction.
4.2		Continue to hire new faculty to meet the demands of projected increases in student enrollment.												
State Objective: Education, Training, and Human Development														

Perf. Measure Number	Description	Base	Target	Actual	Value Type	Desired Outcome	Time Applicable	Calculation Method	Data Source	Data Location	Stakeholder Need Satisfied	Primary Stakeholder	State Funded Program Number Responsible	Notes
4.2.1	By June 30, 2022, increase the number of new faculty by at least 50.	0%	100%	50%	Percent Complete	complete	State Fiscal Year (July 1 - June 30).	0	Internal records	Academic Affairs	Access and support from a South Carolina regional comprehensive university to obtain an undergraduate or graduate degree.	General Public: Students who are high school graduates, veterans, or adults who seek to continue their education or launch their career.	N/A	New faculty here is not "net new" faculty over previous fiscal year's total but "new faces," which include replacements for retired. New faculty for FY2022 was 51. However, for the record, Lander also increased the number of total faculty from 284 in FY21 to 303 in FY22 (+19) and has continued to increase the number of faculty every year since FY2016 to keep up with the significant increases in enrollment over the same time period.
4.3 Continue to hire new staff to meet the demands of projected increases in student enrollment. State Objective: Education, Training, and Human Development														
4.3.1	By June 30, 2022, increase the number of new staff by at least 25.	0%	100%	100%	Percent Complete	complete	State Fiscal Year (July 1 - June 30).	0	Internal records	Business Administration	Access and support from a South Carolina regional comprehensive university to obtain an undergraduate or graduate degree.	General Public: Students who are high school graduates, veterans, or adults who seek to continue their education or launch their career.	N/A	New staff here is not "net new" staff over previous fiscal year's total but "new faces," which include replacements for retired. New staff for FY2022 was 32. However, for the record, Lander also increased the number of total staff from 335 in FY21 to 364 in FY22 (+29) and has continued to increase the number of staff every year since FY2017 to keep up with the significant increases in enrollment over the same time period.
5.1 Increase the number of 100% online bachelor's degrees. State Objective: Education, Training, and Human Development														
5.1.1	By June 30, 2022, introduce at least 1 new 100% online bachelor's degree.	0%	100%	100%	Percent Complete	complete	State Fiscal Year (July 1 - June 30).	0	Internal records	Academic Affairs	Access and support from a South Carolina regional comprehensive university to obtain an undergraduate or graduate degree.	General Public: Students who are high school graduates, veterans, or adults who seek to continue their education or launch their career.	N/A	Lander University launched its 100% online Psychology degree program in the Spring of 2022.
5.2 Increase the total number of new academic programs. State Objective: Education, Training, and Human Development														
5.2.1	By June 30, 2022, develop and approve at least 5 new high-demand, market-driven programs.	0%	100%	100%	Percent Complete	complete	State Fiscal Year (July 1 - June 30).	0	Internal records	Academic Affairs	Access and support from a South Carolina regional comprehensive university to obtain an undergraduate or graduate degree.	General Public: Students who are high school graduates, veterans, or adults who seek to continue their education or launch their career.	N/A	Five new programs launched in the Fall of 2021: Bachelor of Arts (BA), Entrepreneurship, Bachelor of Science (BS), Cybersecurity, Bachelor of Science (BS), Data Science, Master of Arts in Teaching (MAT), Visual Art K 12, Master of Business Administration (MBA).

FY2023

Strategic Plan Development

as submitted for the Accountability Report by:
H210 - LANDER UNIVERSITY

- Goal 1 A governing board regularly engaged in the review of the mission, vision, and policy of the university
- Goal 2 Highly-valued State and local community partner
- Goal 3 Strategic, balanced recruitment and deployment of state employees
- Goal 4 Increase the percentage of all students who advance and succeed at Lander University
- Goal 5 Advancement operations optimized to full support the University's mission
- Goal 6 High-demand, market-driven programs
- Goal 7 Facilities positioned for growth and efficient utilization

Perf. Measure Number	Description	Base	Target	Value Type	Desired Outcome	Time Applicable	Calculation Method	Data Source	Data Location	Stakeholder Need Satisfied	Primary Stakeholder	State Funded Program Number Responsible	Notes	
1.1 Develop a new strategic plan													State Objective: Education, Training, and Human Development	
1.1.1	By June 30, 2023, in collaboration with the Lander University Board of Trustees, develop, approve and publish a new 7-year strategic plan (7/1/2023 – 6/30/2030)	0%	100%	Percent complete	Complete	State Fiscal Year	0	Internal records.	Office of the President	Access and support from a South Carolina regional comprehensive university to obtain an undergraduate or graduate degree.	General Public: Students who are high school graduates, veterans, or adults who seek to continue their education or launch their career.	N/A		
2.1 Launch and develop the South Carolina Institute for the Prevention of Sexual Violence on College Campuses (SCIPSVCC)													State Objective: Education, Training, and Human Development	
2.1.1	By June 30, 2023, develop a mission and vision the SCIPSVCC.	0%	100%	Percent complete	Complete	State Fiscal Year	0	Internal records.	Office of the President	Access and support from a South Carolina regional comprehensive university to obtain an undergraduate or graduate degree.	General Public: Students who are high school graduates, veterans, or adults who seek to continue their education or launch their career.	N/A		
2.1.2	By June 30, 2023, recruit an Executive Director to the SCIPSVCC.	0%	100%	Percent complete	Complete	State Fiscal Year	0	Internal records.	Office of the President	Access and support from a South Carolina regional comprehensive university to obtain an undergraduate or graduate degree.	General Public: Students who are high school graduates, veterans, or adults who seek to continue their education or launch their career.	N/A		
2.1.3	By June 30, 2023, develop a national advisory board to the SCIPSVCC.	0%	100%	Percent complete	Complete	State Fiscal Year	0	Internal records.	Office of the President	Access and support from a South Carolina regional comprehensive university to obtain an undergraduate or graduate degree.	General Public: Students who are high school graduates, veterans, or adults who seek to continue their education or launch their career.	N/A		
2.1.4	By June 30, 2023, develop a website for the SCIPSVCC.	0%	100%	Percent complete	Complete	State Fiscal Year	0	Internal records.	Office of the President	Access and support from a South Carolina regional comprehensive university to obtain an undergraduate or graduate degree.	General Public: Students who are high school graduates, veterans, or adults who seek to continue their education or launch their career.	N/A		
3.1 Optimize the hiring and deployment of state employees													State Objective: Education, Training, and Human Development	
3.1.1	By June 30, 2023, develop and codify the process for hiring and deployment of full-time faculty.	0%	100%	Percent complete	Complete	State Fiscal Year	0	Internal records.	Office of the President, Office of Academic Affairs	Access and support from a South Carolina regional comprehensive university to obtain an undergraduate or graduate degree.	General Public: Students who are high school graduates, veterans, or adults who seek to continue their education or launch their career.	N/A		
3.1.2	By June 30, 2023, develop and codify the process for hiring and deployment of part-time faculty.	0%	100%	Percent complete	Complete	State Fiscal Year	0	Internal records.	Office of the President, Office of Academic Affairs	Access and support from a South Carolina regional comprehensive university to obtain an undergraduate or graduate degree.	General Public: Students who are high school graduates, veterans, or adults who seek to continue their education or launch their career.	N/A		

Perf. Measure Number	Description	Base	Target	Value Type	Desired Outcome	Time Applicable	Calculation Method	Data Source	Data Location	Stakeholder Need Satisfied	Primary Stakeholder	State Funded Program Number Responsible	Notes
3.1.3	By June 30, 2023, develop and codify the process for hiring and deployment of full-time staff.	0%	100%	Percent complete	Complete	State Fiscal Year	0	Internal records.	Office of the President, Office of Finance and Administration	Access and support from a South Carolina regional comprehensive university to obtain an undergraduate or graduate degree.	General Public: Students who are high school graduates, veterans, or adults who seek to continue their education or launch their career.	N/A	
3.1.4	By June 30, 2023, develop and codify the process for hiring and deployment of part-time staff.	0%	100%	Percent complete	Complete	State Fiscal Year	0	Internal records.	Office of the President, Office of Finance and Administration	Access and support from a South Carolina regional comprehensive university to obtain an undergraduate or graduate degree.	General Public: Students who are high school graduates, veterans, or adults who seek to continue their education or launch their career.	N/A	
4.1 Redesign student success										State Objective: Education, Training, and Human Development			
4.1.1	By Fall 2022, hire a Vice President for Student Experience and Quality Assurance.	0%	100%	Percent complete	Complete	State Fiscal Year	0	Internal records.	Office of the President	Access and support from a South Carolina regional comprehensive university to obtain an undergraduate or graduate degree.	General Public: Students who are high school graduates, veterans, or adults who seek to continue their education or launch their career.	N/A	
4.1.2	By June 30, 2023, restructure and reorganize administrative units that support students.	0%	100%	Percent complete	Complete	State Fiscal Year	0	Internal records.	Office of the President	Access and support from a South Carolina regional comprehensive university to obtain an undergraduate or graduate degree.	General Public: Students who are high school graduates, veterans, or adults who seek to continue their education or launch their career.	N/A	
4.1.3	Increase the Fall 2022 first-time freshman retention by 2% as of Fall 2023.	66%	68%	Percent	Equal to or greater than	State Fiscal Year	0	Internal records.	Office of Institutional Research	Access and support from a South Carolina regional comprehensive university to obtain an undergraduate or graduate degree.	General Public: Students who are high school graduates, veterans, or adults who seek to continue their education or launch their career.	N/A	
5.1 Redesign advancement operations										State Objective: Education, Training, and Human Development			
5.1.1	By June 30, 2023, hire a new Vice President for University Advancement.	0%	100%	Percent complete	Complete	State Fiscal Year	0	Internal records.	Office of the President	Access and support from a South Carolina regional comprehensive university to obtain an undergraduate or graduate degree.	General Public: Students who are high school graduates, veterans, or adults who seek to continue their education or launch their career.	N/A	
5.1.2	By June 30, 2023, optimize and reorganize the Office of University Advancement's reporting structure.	0%	100%	Percent complete	Complete	State Fiscal Year	0	Internal records.	Office of the President	Access and support from a South Carolina regional comprehensive university to obtain an undergraduate or graduate degree.	General Public: Students who are high school graduates, veterans, or adults who seek to continue their education or launch their career.	N/A	
6.1 Increase the number of new academic programs										State Objective: Education, Training, and Human Development			
6.1.1	By June 30, 2023, develop and approve at least 4 new high-demand, market-driven programs.	0%	100%	Percent complete	Complete	State Fiscal Year	0	Internal records.	Office of Academic Affairs	Access and support from a South Carolina regional comprehensive university to obtain an undergraduate or graduate degree.	General Public: Students who are high school graduates, veterans, or adults who seek to continue their education or launch their career.	N/A	
7.1 Increase the number of available parking spaces for students										State Objective: Education, Training, and Human Development			
7.1.1	By start of classes in Fall 2022, increase the number of available parking spaces by 150.	0%	100%	Percent complete	Complete	State Fiscal Year	0	Internal records.	Office of Finance and Administration	Access and support from a South Carolina regional comprehensive university to obtain an undergraduate or graduate degree.	General Public: Students who are high school graduates, veterans, or adults who seek to continue their education or launch their career.	N/A	

FY2022

Budget Data

as submitted for the Accountability Report by:

H210 - LANDER UNIVERSITY

State Funded Program No.	State Funded Program Title	Description of State Funded Program	(Actual) General	(Actual) Other	(Actual) Federal	(Actual) Total	(Projected) General2	(Projected) Other	(Projected) Federal4	(Projected) Total
4500.010000.000	Education & General	Supports the financial stability of the university by funding all instruction, academic support, student services, athletics, institutional support, and operation and maintenance of plant.	\$ 9,258,167.00	\$ 71,847,841.00	\$ 185,903.00	\$ 81,291,911.00	\$ 12,077,762.00	\$ 66,753,271.00	\$ 223,238.00	\$ 79,054,271.00
6000.000000.000	Auxiliary Enterprises	These functions charge for their services and are 100% self-supporting. They include Housing, Bookstore, and Dining Services.	-	\$ 17,280,517.00	-	\$ 17,280,517.00	\$ -	\$ 20,823,171.00	\$ -	\$ 20,823,171.00
9500.050000.000	State Employer Contributions	Employee benefits are the employer's share of related FICA, retirement, unemployment insurance, workers compensation, health and dental insurance for all employees.	\$ 2,622,379.00	\$ 9,783,216.87	\$ 64,390.00	\$ 12,469,985.87	\$ 2,643,879.00	\$ 12,087,575.00	\$ 70,754.00	\$ 14,802,208.00

FY2022

Legal Data

as submitted for the Accountability Report by:

H210 - LANDER UNIVERSITY

Law number	Jurisdiction	Type	Description	Purpose the law serves:	Notes:	Changes made during FY2022
Title 59, Chapter 101, Section 10	State	Statute	Lander University is designated as a public, higher education institution in South Carolina	Not related to agency deliverable		No Change
Title 59, Chapter 103, Section 35	State	Statute	Lander University answers to the South Carolina General Assembly through the South Carolina Commission on Higher Education (CHE), which possesses regulatory control over South Carolina public colleges and universities such that "No new program may be undertaken by any public institution of higher education without approval of the Commission."	Requires a service	Degrees.	No Change
Title 59, Chapter 135, Section 30(9)	State	Statute	The Lander Board of Trustees is constituted a body corporate and politic and is authorized to "confer degrees upon students and other persons as the board considers qualified"	Requires a service	Degrees.	No Change

FY2022

Services Data

as submitted for the 2022 Accountability Report by:

H210 - LANDER UNIVERSITY

Description of Service	Description of Direct Customer	Customer Name	Others Impacted by Service	Division or major organizational unit providing the service.	Description of division or major organizational unit providing the service.	Primary negative impact if service not provided.	Changes made to services during FY2022	Summary of changes to services
With more than 60 areas of study, Lander offers incoming students degree opportunities to meet career and personal goals.	Public: High school graduates, veterans, adults looking for a second career.	General Public	Public: High school graduates, veterans, adults looking for a second career.	Lander University	Lander University is a community where learning, energy and creativity flourish. Established over 146 years ago, Lander's tradition of academic excellence is exemplified in its liberal arts and science programs, as well as professional programs in business, education, and nursing.	Loss of opportunity for South Carolina citizens in the region to advance their education, launch their careers, and continue to develop professionally within the state.	No Change	

FY2022

Partnerships Data

as submitted for the 2022 Accountability Report by:

H210 - LANDER UNIVERSITY

Type of Partner Entity	Name of Partner Entity	Description of Partnership	Change to the partnership during the past fiscal year
Individual	Alumni	Provides financial support, institutional support, and student internship opportunities.	No Change
Higher Education Institute	Clemson University	Chemistry-Engineering Dual Degree Partner.	No Change
Higher Education Institute	Clemson University	Mathematics/CIS-Engineering Dual Degree Partner.	No Change
Local Government	Community and Elected Officials	Provides legislative support and opportunities for internships and service learning.	No Change
Individual	Donors	Provides scholarship and institutional support to the university.	No Change
K-12 Education Institute	Education clinical space partners	Provides Lander University teacher education students with clinical learning space and experience.	No Change
K-12 Education Institute	Education clinical space partners	Provides Lander University teacher education students with clinical learning space and experience.	Remove
K-12 Education Institute	Education clinical space partners	Provides Lander University teacher education students with clinical learning space and experience.	Remove
Private Business Organization	Employers	Provides careers for graduates and shares labor market information that helps to shape high-demand, market-driven academic programs at the university.	No Change
Non-Governmental Organization	Healthcare clinical space partners	Provides Lander University nursing students with clinical learning space and experience.	No Change
Non-Governmental Organization	Healthcare clinical space partners	Provides Lander University nursing students with clinical learning space and experience.	Remove
Non-Governmental Organization	Healthcare clinical space partners	Provides Lander University nursing students with clinical learning space and experience.	Remove
K-12 Education Institute	High Schools	Provides Lander college-ready high school students for dual-enrollment course offerings.	No Change
Non-Governmental Organization	Lander University Board of Trustees	Provides oversight of university operations, policies, long-range planning and public accountability	No Change
State Government	South Carolina Legislature	Provides state appropriations to fund educational initiatives	No Change
Higher Education Institute	South Carolina Technical Schools	Various articulation agreements and MOUs for transfer students.	No Change

FY2022

Reports Data

as submitted for the Accountability Report by:

H210 - LANDER UNIVERSITY

Report Name	Law Number (if applicable)	Summary of information requested in the report	Date of most recent submission DURING the past fiscal year	Reporting Frequency	Type of entity/entities	Method to access the report	Direct access hyperlink or agency contact (if not provided to LSA for posting online)	Changes to this report during the past fiscal year	Explanation why a report wasn't submitted
Annual Report of Abatements	Section 59-112-70(A-C) and Section 59-101-620	By November first of each year, state supported institutions of higher learning must submit to the Commission on Higher Education the total number of out-of-state undergraduate students during the prior fiscal year that received abatement of rates pursuant to Section 59-112-70 of the 1976 Code as well as the total dollar amount of the abatements received.	October of 2021	Annually	South Carolina state agency or agencies	Available on agency's website	Director of Institutional Research, Mac Kirkpatrick, mkirkpatrick@lander.edu	No Change	
Faculty Report		Report demographic data on full and part-time faculty including salary, tenure status, contract length, etc.	November of 2021	Annually	South Carolina state agency or agencies	Hard copy available upon request	Director of Institutional Research, Mac Kirkpatrick, mkirkpatrick@lander.edu	No Change	
Fall Semester Course Report		Report course data by semester including subject taught, credit hours per course, starting and ending time and date, method of instruction, etc.	November of 2021	Annually	South Carolina state agency or agencies	Hard copy available upon request	Director of Institutional Research, Mac Kirkpatrick, mkirkpatrick@lander.edu	No Change	
Fall Semester Enrollment Report		Report enrollment by semester including demographic information such as gender, ethnicity, residency, gpa, high school data, etc.	November of 2021	Annually	South Carolina state agency or agencies	Hard copy available upon request	Director of Institutional Research, Mac Kirkpatrick, mkirkpatrick@lander.edu	No Change	
Fall Semester Scholarship Report		Report students by semester receiving state and federal grants and scholarships including PELL, SC LIFE, SC HOPE, demographic data, etc.	October of 2021	Annually	South Carolina state agency or agencies	Hard copy available upon request	Director of Institutional Research, Mac Kirkpatrick, mkirkpatrick@lander.edu	No Change	
IPEDS 12 - Month Enrollment Survey		The 12-Month Enrollment component collects unduplicated student enrollment counts and instructional activity data for an entire 12 -month period.	October of 2021	Annually	Entity within federal government	Hard copy available upon request	Director of Institutional Research, Mac Kirkpatrick, mkirkpatrick@lander.edu	No Change	
IPEDS Academic Libraries Survey		The purpose of the Academic Libraries survey is to collect information on library collections, library expenses, and library services for libraries in degree-granting postsecondary institutions.	March of 2022	Annually	Entity within federal government	Hard copy available upon request	Director of Institutional Research, Mac Kirkpatrick, mkirkpatrick@lander.edu	No Change	
IPEDS Admissions Survey		The primary purpose of admissions survey is to collect basic information about the undergraduate selection process for entering first-time, degree/certificate-seeking students. This includes information about admissions considerations, admissions yields, and SAT and ACT test scores (if test scores are required for admission).	February of 2022	Annually	Entity within federal government	Hard copy available upon request	Director of Institutional Research, Mac Kirkpatrick, mkirkpatrick@lander.edu	No Change	

Report Name	Law Number (if applicable)	Summary of information requested in the report	Date of most recent submission DURING the past fiscal year	Reporting Frequency	Type of entity/entities	Method to access the report	Direct access hyperlink or agency contact (if not provided to LSA for posting online)	Changes to this report during the past fiscal year	Explanation why a report wasn't submitted
IPEDS Completions Survey		This survey collects the number of degrees and certificates awarded by field of study, level of award, race/ethnicity, and gender. The reporting period for the Completions component is during the 12-month time period beginning July 1 of the previous calendar year and ending June 30 of the current calendar year.	October of 2021	Annually	Entity within federal government	Hard copy available upon request	Director of Institutional Research, Mac Kirkpatrick, mkirkpatrick@lander.edu	No Change	
IPEDS Enrollment Survey		The Fall Enrollment component collects student enrollment counts by level of student, enrollment status, gender and race/ethnicity. In addition, first-time student retention rates and the student-to-faculty ratio are collected.	March of 2022	Annually	Entity within federal government	Hard copy available upon request	Director of Institutional Research, Mac Kirkpatrick, mkirkpatrick@lander.edu	No Change	
IPEDS Finance Survey		The purpose of the IPEDS Finance component is to collect basic financial information from items associated with the institution's General Purpose Financial Statements using GASB (Governmental Accounting Standards Board) standards.	March of 2022	Annually	Entity within federal government	Hard copy available upon request	Director of Institutional Research, Mac Kirkpatrick, mkirkpatrick@lander.edu	No Change	
IPEDS Financial Aid Survey		The purpose of the Student Financial Aid survey is to collect information about financial aid provided to various groups of undergraduate students and military/veteran educational benefits for all students at the institution.	February of 2022	Annually	Entity within federal government	Hard copy available upon request	Director of Institutional Research, Mac Kirkpatrick, mkirkpatrick@lander.edu	No Change	
IPEDS Graduation Rate 200% Survey		The Graduation Rate 200 component is a further extension of the traditional Graduation Rates (GR) component which carries forward 100% and 150% graduation rates data previously reported in the GR component and requests information on any additional completers and exclusions from the cohort between 151% and 200% of normal time for students to complete all requirements of their program of study.	February of 2022	Annually	Entity within federal government	Hard copy available upon request	Director of Institutional Research, Mac Kirkpatrick, mkirkpatrick@lander.edu	No Change	
IPEDS Graduation Rate Survey		The Graduation Rate component collects data on the cohort of full-time, first-time degree/certificate-seeking undergraduate students and tracks their completion status at 150% of the normal time to complete all requirements of their program of study.	February of 2022	Annually	Entity within federal government	Hard copy available upon request	Director of Institutional Research, Mac Kirkpatrick, mkirkpatrick@lander.edu	No Change	
IPEDS Human Resources Survey		The HR component collects important information about the staff of the institution including faculty (instructional staff) and non-instructional staff by occupational category.	April of 2022	Annually	Entity within federal government	Hard copy available upon request	Director of Institutional Research, Mac Kirkpatrick, mkirkpatrick@lander.edu	No Change	

Report Name	Law Number (if applicable)	Summary of information requested in the report	Date of most recent submission DURING the past fiscal year	Reporting Frequency	Type of entity/entities	Method to access the report	Direct access hyperlink or agency contact (if not provided to LSA for posting online)	Changes to this report during the past fiscal year	Explanation why a report wasn't submitted
IPEDS Institutional Characteristics Survey		Report data on institution including student services, veterans services, tuition and fees, price of attendance, etc.	September of 2021	Annually	Entity within federal government	Hard copy available upon request	Director of Institutional Research, Mac Kirkpatrick, mkirkpatrick@lander.edu	No Change	
IPEDS Outcome Measures Survey		The Outcome Measures survey collects award and enrollment data from degree-granting institutions on four undergraduate cohorts at two points in time: six-year and eight-year for four cohorts of degree-seeking undergraduates. The four cohorts are: Full-time, first-time; Part-time, first-time; Full-time, non-first-time; Part-time, non-first-time.	February of 2022	Annually	Entity within federal government	Hard copy available upon request	Director of Institutional Research, Mac Kirkpatrick, mkirkpatrick@lander.edu	No Change	
NC - SARA Annual Enrollment Report		Annually report to the National Council for State Authorization Reciprocity Agreements the number of students enrolled in the institution via distance education delivered outside the home state of the institution, disaggregated by state, territory, or district in which the students reside.	May of 2022	Annually	Other	Hard copy available upon request	Director of Institutional Research, Mac Kirkpatrick, mkirkpatrick@lander.edu	No Change	
NCAA Graduation Success Rates/Academic Success Report		Data for graduation rates, enrollment, Graduation Success Rates and Academic Success Rates is collected.	May of 2022	Annually	Other	Hard copy available upon request	Director of Institutional Research, Mac Kirkpatrick, mkirkpatrick@lander.edu	No Change	
Program Completers		Report the program students graduated in the last academic year including program name, program code, degree type, semester of graduation, demographic data, etc.	September of 2021	Annually	South Carolina state agency or agencies	Hard copy available upon request	Director of Institutional Research, Mac Kirkpatrick, mkirkpatrick@lander.edu	No Change	
Report on Admission Standards for First-Time Entering Freshmen		Collects data on first-time freshmen applicants, including SAT scores, high school rank, high school gpa, etc.	January of 2022	Annually	South Carolina state agency or agencies	Hard copy available upon request	Director of Institutional Research, Mac Kirkpatrick, mkirkpatrick@lander.edu	No Change	
Southern Association of Colleges and Schools Commission on Colleges Institutional Profile Report		This report gathers: General Information, Institutional Personnel Information, Enrollment Information, and Graduation Rate data.	January of 2022	Annually	Other	Hard copy available upon request	Director of Institutional Research, Mac Kirkpatrick, mkirkpatrick@lander.edu	No Change	
Spring Semester Course Report		Report course data by semester including subject taught, credit hours per course, starting and ending time and date, method of instruction, etc.	April of 2022	Annually	South Carolina state agency or agencies	Hard copy available upon request	Director of Institutional Research, Mac Kirkpatrick, mkirkpatrick@lander.edu	No Change	
Spring Semester Enrollment Report		Report enrollment by semester including demographic information such as gender, ethnicity, residency, gpa, high school data, etc.	April of 2022	Annually	South Carolina state agency or agencies	Hard copy available upon request	Director of Institutional Research, Mac Kirkpatrick, mkirkpatrick@lander.edu	No Change	
Spring Semester Scholarship Report		Report students by semester receiving state and federal grants and scholarships including PELL, SC LIFE, SC HOPE, demographic data, etc.	April of 2022	Annually	South Carolina state agency or agencies	Hard copy available upon request	Director of Institutional Research, Mac Kirkpatrick, mkirkpatrick@lander.edu	No Change	
Summer Semester Course Report		Report course data by semester including subject taught, credit hours per course, starting and ending time and date, method of instruction, etc.	August of 2021	Annually	South Carolina state agency or agencies	Hard copy available upon request	Director of Institutional Research, Mac Kirkpatrick, mkirkpatrick@lander.edu	No Change	

Report Name	Law Number (if applicable)	Summary of information requested in the report	Date of most recent submission DURING the past fiscal year	Reporting Frequency	Type of entity/entities	Method to access the report	Direct access hyperlink or agency contact (if not provided to LSA for posting online)	Changes to this report during the past fiscal year	Explanation why a report wasn't submitted
Summer Semester Enrollment Report		Report enrollment by semester including demographic information such as gender, ethnicity, residency, gpa, high school data, etc.	August of 2021	Annually	South Carolina state agency or agencies	Hard copy available upon request	Director of Institutional Research, Mac Kirkpatrick, mkirkpatrick@lander.edu	No Change	