

AGENCY NAME:	South Carolina State PSA		
AGENCY CODE:	P210	SECTION:	046

**2022
Accountability Report**

SUBMISSION FORM

I have reviewed and approved the data submitted by the agency in the following templates:

- Data Template
 - Reorganization and Compliance
 - FY2022 Strategic Plan Results
 - FY2023 Strategic Plan Development
 - Legal
 - Services
 - Partnerships
 - Report or Review
 - Budget
- Discussion Template
- Organizational Template

I have reviewed and approved the financial report summarizing the agency’s budget and actual expenditures, as entered by the agency into the South Carolina Enterprise Information System.

The information submitted is complete and accurate to the extent of my knowledge.

AGENCY DIRECTOR <i>(SIGN AND DATE):</i>	SIGNATURE ON FILE	Signature Received: 9/15/2022 16:54
<i>(TYPE/PRINT NAME):</i>	Louis D. Whitesides	

BOARD/CMSN CHAIR <i>(SIGN AND DATE):</i>	N/A	
<i>(TYPE/PRINT NAME):</i>		

AGENCY NAME:	South Carolina State PSA		
AGENCY CODE:	P210	SECTION:	046

AGENCY’S DISCUSSION AND ANALYSIS

During the 2021-2022 fiscal year, SC State 1890 Research and Extension PSA worked to provide non-biased, science-based information to the citizens of South Carolina. The focus was on working relationships between Research and Extension to produce relevant and timely information to solve issues at the community, county, and state levels. Critical Issues that continue to be at the forefront of the SC State P210 funding are (1) agribusiness and community development, (2) agrisystems productivity and profitability, (3) environmental and natural resources conservation, (4) family and youth development and (5) food safety, security, and nutrition. The research scientists continue to improve the quality-of-life experiences, while Extension focuses on providing resources and solutions to issues South Carolinians continue to face. Research and Extension worked cohesively to improve and enhance the lives of South Carolina residents.

In addition to the research and outreach efforts conducted by SC State Research and Extension, a few significant events that occurred at SC State during FY 2021-2022 was the “Next Wave of Hemp”. It expressed how South Carolina builds an industrial supply chain and infrastructure for a green future. It measured the standards of the multi-billion-dollar agribusiness industry. The event impact caused an increase in knowledge, expanded partnerships, and explored markets covering hemp. Another exciting experience was the opening of a new research and demonstration farm in Olar, SC. The farm operations will identify challenges impacting South Carolina’s agriculture industry. It will also study the emerging hemp crop and research vegetable production using conventional and organic practices; explore agroforestry; and expand community gardening. In addition, a ribbon-cutting ceremony for the opening of the Camp Harry E. Daniels Leadership Center in Elloree, SC was held. The Center will be utilized to enhance leadership skills and implement a learn by doing principle. It will expose opportunities to increase knowledge in STEM, nutrition education, literacy, and arts. The Center will serve as a community resource for business and industry, non-profits, organizations; etc. It will also increase facility usage in the community.

SC State Extension served 48,720 people through direct contacts and 233,163 indirect contacts were logged for the reporting period of July 1, 2021 – June 30, 2022. A total of 78 cooperative agreements/memorandums of understanding were established to assist in the spreading of information to increase knowledge and administer activities/programs to the public. Throughout the reporting period that encompassed the 5 Critical Issues within the 7 regions of the state, 671 workshops were conducted. Social media was instrumental in making sure the work of 1890 Research and Extension was spread across the state. Facebook reach 131,346 people, while Twitter had a reach of 110,667. YouTube had 54 subscribers with a reach of 186,291. Overall, utilizing six different media platforms, the PSA P210 funding reached a total of 509,006 people. Since the COVID-19 pandemic, Extension agents had to develop another means of delivering services to the constituents. Therefore, 88 virtual classes were established. Over two hundred traditional classes were administered and 8 @ Home Series were produced by the Extension staff.

The SC State Research Program serves as a catalyst to keep the University at the forefront of agricultural and rural research problems and issues confronting South Carolina. The researchers are emerging leaders in their fields and they are working to combat obesity among youth, enhancing bioremediation technology, improving food safety and security, developing optimization models that will aid in decreasing logistics costs for biofuel and identifying techniques to increase academic

AGENCY NAME:	South Carolina State PSA		
AGENCY CODE:	P210	SECTION:	046

performance of students in public schools. SC State Researchers and Extension professionals are training undergraduate and graduate students to become the nation’s next generation of biologists, engineers, environmental scientists and educators.

As a part of the professional growth for the students, SC State 1890 Agriculture Innovation Scholarship (AIS) Program has had an immediate impact on the post-secondary access and persistence of college students from around the country and the university at large. The scholars’ program has recruited outstanding students to attend the university to pursue and graduate with a baccalaureate degree in the food and agricultural sciences and other related fields, which would lead to a highly skilled food and agricultural systems workforce. As a direct result, more students have enrolled in the majors of Agribusiness and Family & Consumer Sciences in the newly established College of Agriculture and Family and Consumer and Sciences (CAFCS). In addition to providing the necessary funding for students to pay for college, the 1890 AIS Program has helped mitigate the risk of students withdrawing from the university and not earning their degrees by launching a student intervention program. Thus, helping to reduce student’s financial constraints and concerns, the scholarship program allowed students more time for studying, learning in the food, agriculture, natural resources, and human science degree programs and engaging in personal and professional development and leadership opportunities.

The SC State 1890 AIS Program has witnessed many accomplishments during 2021-2022 academic year. With the support and assistance of the 1890 Research and Extension leadership, university officials, and community partners, we were able to make major impacts in the lives of the scholarship recipients and the university. The measurable goals for the SC State 1890 Agriculture Innovation Scholarship Program:

1. Increase student enrollment to prepare a diverse workforce from the CAFCS by 15% within the 4-year project period.
2. Increase the number of graduates from the CAFCS by 15% within the 4-year project period.
3. Expand the experiential learning opportunities for SC State 1890 Agriculture Innovation Scholars within the CAFCS, by 20% within the 4-year project period.

A total of 26 research projects were funded for the reporting period. Five research projects ended during the yearly report period. Four research project administrators requested and received extensions because of mitigating circumstances they were unable to meet their original completion date, due mainly to the COVID-19 crisis. Four final bulletins were written and/or submitted for publication. Five new projects were able to come aboard for the upcoming reporting period.

To highlight a subset of accomplishments from the research projects, SC state restructured its Agribusiness and Community Development Critical Issue. Effective implementation of the program will enhance the economic and community development of South Carolina through traditional and cutting-edge technology, innovation, and best practices. The intent is to deliver continuous and coordinated efforts to create the economic, environmental, and social conditions that allow communities to thrive.

For SC State Extension, small scale commercial vegetable producers, farmers, gardeners, and livestock producers face increasingly high production costs with their enterprises. The Critical Issue of Agrisystems Productivity and Profitability accumulated 3,798 direct contact hours through the operation of 3 programs (Small Scale Animal Production, Sustainable Agriculture Production and Risk Management Education). The overall goals are to promote retention of small-scale family farms; reduce off-farm input and integrate natural processes such as nutrient cycling, nitrogen fixation, and pest-

AGENCY NAME:	South Carolina State PSA		
AGENCY CODE:	P210	SECTION:	046

predator relationships into the agricultural production processes. Many of SC State’s Extension participants sought ways to keep their businesses afloat. Some of the small-scale producers saw their profit margin decline. Unless the producers could get a handle on production cost, they could very well fail with their individual operations. Workshops, seminars and trainings were held to assist the small-scale producers and limited resource farmers in increasing their profits and maintaining the land.

Under the Critical Issue of Environmental and Natural Resources Conservation, the research unit has several research projects. Scientists have focused on accumulation of post-consumer waste plastics; saving energy by recovering resin, and reutilizing post-consumer plastics (PCPs). Research was conducted on susceptibility of stored product insects to gaseous ozone focusing on flow characteristics and penetration of ozone through various materials.

According to SC State Extension, the family is one of society’s oldest and most resilient institutions. Therefore, we have to maintain the health and wellness of the family. The Critical Issue of Food Safety, Security and Nutrition had 6,661 direct contacts. A total of 6 areas (Building Family Strengths, Household and Family Financial Management; Children, Youth and Families at Risk; Expanded Food and Nutrition Education Program (EFNEP); Food Safety and Wellness and Diet, Nutrition, and Health) encompass the Critical Issue of Food Safety, Security and Nutrition. EFNEP Educators fulfilled the requirements of many of the critical components for healthy eating through the Eat Smart and Move More, Kids in the Kitchen, and Smart from the Start curriculums. They were able to get participants to eat healthier and exercise more. Limited resource youth and families with children learned how to eat healthier meals and snacks, stretch their food dollars and reduce the risk of food-borne illnesses. Participants received monthly healthy tips dealing with indoor exercises, healthy recipes, and guidelines for improving overall health. Physical activity demonstrations were introduced through exercise strategies that were easy to do and did not require equipment or additional resources.

The Healthy Lifestyles Project emphasized healthy food alternatives and provided opportunities for participants to increase daily physical exercise, activities that improved heart rate and increase water intake. The activities consisted of small group activities, lectures, PowerPoint presentations, and food-tasting demonstrations. SC State Extension conducted healthy lifestyle educational workshops with 7 different youth groups across 3 counties. The total number of participants were 193 with 39 outreach activities conducted. Activities conducted engaged youth from kindergarten to eighth grade and many consisted of physical activity demonstrations and healthy eating combined.

The Critical Issue: Food Safety, Security and Nutrition through 4 different research projects were explored. Research focused on the impact of international trade policy changes on global food security and South Carolina agriculture; susceptibility of insects to gaseous ozone: flow characteristics and penetration of ozone through various materials; you are what you eat: investigating nutrition as a key prophylaxis against chronic inflammation and other co-morbidities in South Carolina families and an analysis of phytochemicals isolated from sweet potatoes grown of South Carolina farms and antibacterial effects of sweet potatoes phenolic extracts on foodborne pathogens.

The organizational objectives have been tweaked or changed to reflect the new strategies of the agency. The agency continues to implement the strategic plan that will underpin the organization operations and services. The overall objectives are as follows: 1. Enhance the public image of 1890 Research and Extension as a premier resource for information and community education through innovative cutting-edge relevant research, delivery of significant programs and services. 2. Attract and retain high-quality,

AGENCY NAME:	South Carolina State PSA		
AGENCY CODE:	P210	SECTION:	046

passionate employees through consistent and effective on-boarding, professional development, mentorship, promotion and retention by ensuring staff has the support they need to do their best work and take their skills to the next level. 3. Expand and increase the reach of research inquiry and extension programs to underserved and emerging audiences to all 46 counties in South Carolina, the southeast region and internationally. 4. Acquire, build and upgrade existing facilities to provide the highest quality spaces for the important work of researchers, agents and students as we prepare 1890 for the next century of success. 5. Integration of digital technology as an essential tool for the dissemination of research findings and delivery of extension educational programming to provide a sustainable model to fulfill the organization’s mission. 6. Identify and secure public and private resources as well as revenue generating opportunities to support the successful implementation and support of core research, outreach, new initiatives and create a financial buffer to reduce major impacts of future cuts or economy downturns. 7. Demonstrates accountability of public funds; and 8. Uphold a culture of integrity, excellence, stewardship, and accountability in pursuit of 1890 SMART & FAST goals and economic viability. The acronym SMART represents Specific Measurable Achievable Realistic Time bound, while FAST stands for Frequent Ambitious Specific Transparent.

Factors that may or may not impact the internal and external performance of the organization include: (1) The submission of an approved NIFA Plan of Work (POW) Accomplishments and Results Report as well as an Annual POW Plan in a timely manner; (2) An official and professional electronic reporting system is needed to collect and interpret data of program activities. Discussions continue to encourage the implementation of a reporting system that will be effective and enhance the reporting for the organization. Challenges continue to be encountered as it relates to finding the appropriate system for the agency and purchasing tools for training and maintenance requirements of the system; (3) Strengthening program development; (4) The availability of faculty release time to conduct research; (5) Preparing the Mobile Technology Center (MTC) for use and expanding the technology focus to travel across the state assisting regions with programs; (6) Expanding the professional development training for Research and Extension staff; (7) Emphasizing the land grant tradition of public service; (8) Assisting academic areas in developing new and innovative programs/activities; (9) Developing Smart Farms as a resource for farmers; (10) During 2021 – 2022, work continued to be done regarding the 1890 facilities construction projects. To date, occupancy has occurred within the 3 building projects. However, the Coastal Region Office building in Charleston, SC continues to require some repairs. The success of the 1890 Facilities Projects is dependent on a fluid and consistent partnership between USDA/NIFA, 1890 Research and Extension, SC State’s Finance Division, and the SC Department of Administration. If there is an issue with any member of the partnership, the total project could be delayed or rejected by the approving agency or agencies. Some staff members have been hired to begin operation in the Coastal Region. (11) The inability to hire individuals with the proven, demonstrated skills necessary to secure external funds would interfere with the 1890 Program’s ability to achieve its external funding goal; (12) Enhancing an opportunity to strengthen and develop more collaborations and partnerships across the state with various entities; and (13) Continue to purchase new facilities to accommodate the increase of staff, expand programs and activities, and provide an SC State 1890 presence across the state.

AGENCY NAME:

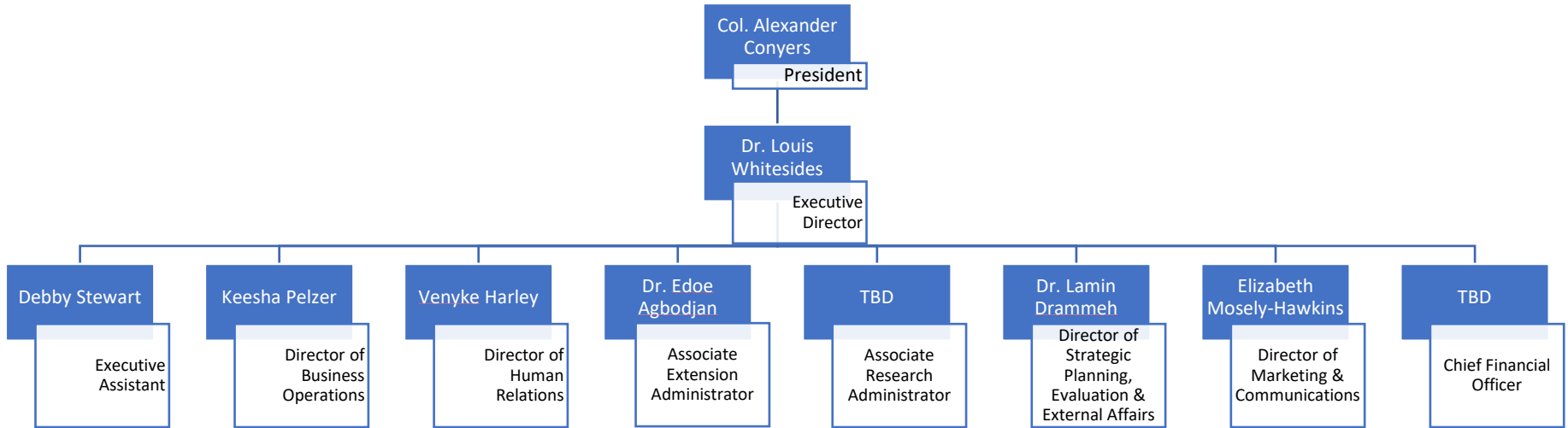
South Carolina State PSA

AGENCY CODE:

P210

SECTION:

046



FY 2022

Reorganization and Compliance

as submitted for the Accountability Report by:

P210 - SC STATE UNIVERSITY - PSA

Primary Contact

First Name	Last Name	Role/Title	Email Address	Phone
Sharon	Wade-Byrd	Director of Accountability and Plan of Work	Swadel@scsu.edu	803-536-8697

Secondary Contact

First Name	Last Name	Role/Title	Email Address	Phone
Tokmeco	James	Director of Compliance & Grants Management, PSA	tjames@scsu.edu	803-516-4745

Agency Mission

Adopted in:

2018

The overall mission of SC State PSA is to promote an organized research and extension system that incorporates stakeholders' input into the design, implementation and evaluation of programs, activities and services, which address quality of life issues by providing research-based solutions for South Carolinians.

Agency Vision

Adopted in:

2018

The SC State PSA vision is to be a resource in the delivery of innovative and effective outreach programs and activities as well as cutting edge research in pursuit of an improved quality of life and higher standard of living for the residents of the State of South Carolina.

Recommendations for reorganization requiring legislative change:

None

Agency intentions for other major reorganization to divisions, departments, or programs to allow the agency to operate more effectively and efficiently in the succeeding fiscal year:

None

Significant events related to the agency that occurred in FY2022

Description of Event	Start	End	Agency Measures Impacted	Other Impacts
Established a partnership agreement with SC Governor's School for Agriculture at John De La Howe	September	June	Number of established cooperative agreements/MOUs.	The partnership provided external community outreach and 2 students enrolled at SC State through the 1890 Ag Innovation Scholarship Program.
Established a partnership agreement with SC Governor's School for Agriculture at John De La Howe	September	June	Number of summer academics/camps designed to increase educational attainment and enhance the occupational outlook of participants.	Two students from the Pee Dee Region attended the Bulldog Ag Immersion Camp and were accepted to attend John Del La Howe Governor's School.
Launched television show, "Growing Palmetto". Promotes how SC State is advancing its programs and staff through innovative research and professional development.	June	June	Number of new media platforms developed.	
Held a Beginning Farmers, Ranchers and Veterans Conference. Farmers learned about food safety and received hands-on training to learn skills to help them maximize profit, while farming.	May	May	Number of participants increased knowledge in safe food handling and nutrition.	

Is the agency in compliance with S.C. Code Ann. § 2-1-220, which requires submission of certain reports to the Legislative Services Agency for publication online and the State Library? (See also S.C. Code Ann. § 60-2-20).

Yes

Reason agency is out of compliance: (if applicable)

Is the agency in compliance with various requirements to transfer its records, including electronic ones, to the Department of Archives and History? See the Public Records Act (S.C. Code Ann. § 20-1-10 through 20-1-180) and the South Carolina Uniform Electronic Transactions Act (S.C. Code Ann. § 26-6-10 through 26-10-210).	<p style="text-align: center;">Yes</p>
Does the law allow the agency to promulgate regulations?	<p style="text-align: center;">No</p>
Law number(s) which gives the agency the authority to promulgate regulations:	
Has the agency promulgated any regulations?	<p style="text-align: center;">No</p>
Is the agency in compliance with S.C. Code Ann. § 1-23-120 (J), which requires an agency to conduct a formal review of its regulations every five years?	<p style="text-align: center;">No</p>
(End of Reorganization and Compliance Section)	

FY2022

Strategic Plan Results

as submitted for the Accountability Report by:

P210 - SC STATE UNIVERSITY - PSA

- Goal 1 To generate greater harmony between agriculture and the environment.
- Goal 2 To develop a healthy, well-nourished population.
- Goal 3 To enhance economic opportunity and quality of life for Americans.
- Goal 4 To promote an agricultural system that is highly competitive in the global economy.
- Goal 5 To provide a safe and secure food and fiber system.

Perf. Measure Number	Description	Base	Target	Actual	Value Type	Desired Outcome	Time Applicable	Calculation Method	Data Source	Data Location	Stakeholder Need Satisfied	Primary Stakeholder	State Funded Program Number Responsible	Notes
1.1 To provide natural resource and environmental education programming and promote effective water quality strategies.														
State Objective: Education, Training, and Human Development														
1.1.1	Number of farmers educated on the importance of soil/nutrient management through soil testing.	573	674	602	Count	equal to or greater than	State Fiscal Year (July 1 - June 30).	Total Reported by Staff	1890 POW Reporting System	Each regional office and Office of Accountability and Reporting	Increase knowledge/skills managing soil/nutrients	Small farmers, ranchers and landowners	#1; #2; #3; #4; #5	
1.1.2	Number of participants gaining knowledge from small farm assistance and outreach programs.	1307	1538	1372	Count	equal to or greater than	State Fiscal Year (July 1 - June 30).	Total Reported by Staff	1890 POW Reporting System	Each regional office and Office of Accountability and Reporting	Expanding knowledge on how program services can assist participants	Small farmers, ranchers, producers and landowners	#1; #2; #3; #4; #5	
1.1.3	Number of producers indicated adoption of recommended practices.	280	331	294	Count	equal to or greater than	State Fiscal Year (July 1 - June 30).	Total Reported by Staff	1890 POW Reporting System	Each regional office and Office of Accountability and Reporting	Provide practices to increase crop utilization	Small farmers and producers	#1; #2; #3; #4; #5	
2.1 To provide family, resource management and educational programs to improve the well-being of the family structure within limited-resource communities.														
State Objective: Healthy and Safe Families														
2.1.1	Number of summer academics/camps designed to increase educational attainment and enhance the occupational outlook of participants.	9	12	6	Count	equal to or greater than	State Fiscal Year (July 1 - June 30).	Total Reported by Staff	1890 POW Reporting System	Each regional office and Office of Accountability and Reporting	Provide knowledge and implement educational activities to enhance student learning	Children and youth	#1; #2; #3; #4; #5	
2.1.2	Number of participants increased knowledge in safe food handling and nutrition.	826	972	867	Count	equal to or greater than	State Fiscal Year (July 1 - June 30).	Total Reported by Staff	1890 POW Reporting System	Each regional office and Office of Accountability and Reporting	Increase skills on safe and effective handling of food	Children, youth and families	#1; #2; #3; #4; #5	
2.1.3	Number adopting recommended hand washing practices.	421	497	442	Count	equal to or greater than	State Fiscal Year (July 1 - June 30).	Total Reported by Staff	1890 POW Reporting System	Each regional office and Office of Accountability and Reporting	Provide safe and healthy tips to properly wash hands	Children, youth and families	#1; #2; #3; #4; #5	
3.1 To provide leadership programming to limited resource individuals through the development of educational programs and community economic development initiatives.														
State Objective: Public Infrastructure and Economic Development														
3.1.1	Number of Outreach Activities held by 1890 for the External Community.	128	143	135	Count	equal to or greater than	State Fiscal Year (July 1 - June 30).	Total Reported by Staff	1890 POW Reporting System	Each regional office and Office of Accountability and Reporting	New partnerships and/or resources for program implementation	Partnerships with outside agencies	#1; #2; #3; #4; #5	
3.1.2	Number of participants for the External Community Outreach Activities.	5408	6367	5679	Count	equal to or greater than	State Fiscal Year (July 1 - June 30).	Total Reported by Staff	1890 POW Reporting System	Each regional office and Office of Accountability and Reporting	Increase participant participation in outreach activities	Children, youth, families, small farmers, ranchers and landowners	#1; #2; #3; #4; 5	
3.1.3	Number of established cooperative agreements/MOUs.	49	54	78	Count	equal to or greater than	State Fiscal Year (July 1 - June 30).	Total Reported by Staff	1890 POW Reporting System	Each regional office and Office of Accountability and Reporting	Expand partnerships and/or resources for program implementation	Partnerships with faith-based organizations, community centers, government agencies, schools, etc.	#1; #2; #3; #4; #5	
4.1 To assist farmers (small socially disadvantaged, underserved, minority and owners) in retaining their land and reversing the decline in the number of farms in South Carolina.														
State Objective: Government and Citizens														
4.1.1	Number of producers indicating adoption of recommended practices.	280	331	294	Count	equal to or greater than	State Fiscal Year (July 1 - June 30).	Total Reported by Staff	1890 POW Reporting System	Each regional office and Office of Accountability and Reporting	Identifying knowledge gained and implemented	Farmers, ranchers, landowners and producers	#1; #2; #3; #4; #5	
4.1.2	Number of attendees at outreach activities.	1690	1990	1775	Count	equal to or greater than	State Fiscal Year (July 1 - June 30).	Total Reported by Staff	1890 POW Reporting System	Each regional office and Office of Accountability and Reporting	Identifying interest in specific program/activities	Children, youth, families, farmers, producers, landowners, etc.	#1; #2; #3; #4; #5	
4.1.3	Number of acres affected by Integrated Crop Management (ICM).	864	1017	907	Count	equal to or greater than	State Fiscal Year (July 1 - June 30).	Total Reported by Staff	1890 POW Reporting System	Each regional office and Office of Accountability and Reporting	Identify acres affected and provide knowledge to better serve landowner	Producers, landowners and farmers	#1; #2; #3; #4; #5	
5.1 To provide nutrition education that promotes healthy living and allows opportunity for assessing healthy behaviors to deter the prevalence of obesity.														
State Objective: Healthy and Safe Families														

Perf. Measure Number	Description	Base	Target	Actual	Value Type	Desired Outcome	Time Applicable	Calculation Method	Data Source	Data Location	Stakeholder Need Satisfied	Primary Stakeholder	State Funded Program Number Responsible	Notes
5.1.1	Number gained knowledge on healthy eating patterns.	826	972	867	Count	equal to or greater than	State Fiscal Year (July 1 - June 30).	Total Reported by Staff	1890 POW Reporting System	Each regional office and Office of Accountability and Reporting	Demonstrate healthy eating patterns through education	Children, youth, families, farmers, etc.	#1; #2; #3; #4; #5	
5.1.2	Number reported an intention to eat more or healthy foods.	675	795	709	Count	equal to or greater than	State Fiscal Year (July 1 - June 30).	Total Reported by Staff	1890 POW Reporting System	Each regional office and Office of Accountability and Reporting	Increase the knowledge of healthy eating through hands-on experiences	Children, youth, families, farmers, etc.	#1; #2; #3; #4; #5	
5.1.3	Number gained knowledge about eating more of healthy foods.	1624	1913	1705	Count	equal to or greater than	State Fiscal Year (July 1 - June 30).	Total Reported by Staff	1890 POW Reporting System	Each regional office and Office of Accountability and Reporting	Expand skills and knowledge to change lifestyle	Children, youth, families, farmers, etc.	#1; #2; #3; #4; #5	

FY2023

Strategic Plan Development

as submitted for the Accountability Report by:

P210 - SC STATE UNIVERSITY - PSA

- Goal 1 To generate greater harmony between agriculture and the environment.
- Goal 2 To develop a healthy, well-nourished population.
- Goal 3 To enhance economic opportunity and quality of life for Americans.
- Goal 4 To promote an agricultural system that is highly competitive in the global economy.
- Goal 5 To provide a safe and secure food and fiber system.

Perf. Measure Number	Description	Base	Target	Value Type	Desired Outcome	Time Applicable	Calculation Method	Data Source	Data Location	Stakeholder Need Satisfied	Primary Stakeholder	State Funded Program Number Responsible	Notes
1.1 To provide natural resource and environmental education programming and promote effective water quality strategies.													
State Objective: Education, Training, and Human Development													
1.1.1	Number of farmers educated on the importance of soil/nutrient management through soil testing.	573	674	Count	equal to or greater than	State Fiscal Year (July 1 - June 30).	Total Reported by Staff	1890 POW Reporting System	Each regional office and Office of Accountability and Reporting	Increase knowledge/skills managing soil/nutrients	Small farmers, ranchers and landowners	#1; #2; #3; #4; #5	
1.1.2	Number of participants gaining knowledge from small farm assistance and outreach programs.	1307	1538	Count	equal to or greater than	State Fiscal Year (July 1 - June 30).	Total Reported by Staff	1890 POW Reporting System	Each regional office and Office of Accountability and Reporting	Expanding knowledge on how program services can assist participants	Small farmers, ranchers, producers and landowners	#1; #2; #3; #4; #5	
1.1.3	Number of producers indicated adoption of recommended practices.	280	331	Count	equal to or greater than	State Fiscal Year (July 1 - June 30).	Total Reported by Staff	1890 POW Reporting System	Each regional office and Office of Accountability and Reporting	Provide practices to increase crop utilization	Small farmers and producers	#1; #2; #3; #4; #5	
2.1 To provide family, resource management and educational programs to improve the well-being of the family structure within limited-resource communities.													
State Objective: Healthy and Safe Families													
2.1.1	Number of summer academics/camps designed to increase educational attainment and enhance the occupational outlook of participants.	9	12	Count	equal to or greater than	State Fiscal Year (July 1 - June 30).	Total Reported by Staff	1890 POW Reporting System	Each regional office and Office of Accountability and Reporting	Provide knowledge and implement educational activities to enhance student learning	Children and youth	#1; #2; #3; #4; #5	
2.1.2	Number of participants increased knowledge in safe food handling and nutrition.	826	972	Count	equal to or greater than	State Fiscal Year (July 1 - June 30).	Total Reported by Staff	1890 POW Reporting System	Each regional office and Office of Accountability and Reporting	Increase skills on safe and effective handling of food	Children, youth and families	#1; #2; #3; #4; #5	
2.1.3	Number adopting recommended hand washing practices.	421	497	Count	equal to or greater than	State Fiscal Year (July 1 - June 30).	Total Reported by Staff	1890 POW Reporting System	Each regional office and Office of Accountability and Reporting	Provide safe and healthy tips to properly wash hands	Children, youth and families	#1; #2; #3; #4; #5	
3.1 To provide leadership programming to limited resource individuals through the development of educational programs and community economic development initiatives.													
State Objective: Public Infrastructure and Economic Development													
3.1.1	Number of Outreach Activities held by 1890 for the External Community.	128	143	Count	equal to or greater than	State Fiscal Year (July 1 - June 30).	Total Reported by Staff	1890 POW Reporting System	Each regional office and Office of Accountability and Reporting	New partnerships and/or resources for program implementation	Partnerships with outside agencies	#1; #2; #3; #4; #5	
3.1.2	Number of participants for the External Community Outreach Activities.	5408	6367	Count	equal to or greater than	State Fiscal Year (July 1 - June 30).	Total Reported by Staff	1890 POW Reporting System	Each regional office and Office of Accountability and Reporting	Increase participant participation in outreach activities	Children, youth, families, small farmers, ranchers and landowners	#1; #2; #3; #4; #5	
3.1.3	Number of established cooperative agreements/MOUs.	49	54	Count	equal to or greater than	State Fiscal Year (July 1 - June 30).	Total Reported by Staff	1890 POW Reporting System	Each regional office and Office of Accountability and Reporting	Expand partnerships and/or resources for program implementation	Partnerships with faith-based organizations, community centers, government agencies, schools, etc.	#1; #2; #3; #4; #5	
4.1 To assist farmers (small socially disadvantaged, underserved, minority and owners) in retaining their land and reversing the decline in the number of farms in South Carolina.													
State Objective: Government and Citizens													
4.1.1	Number of producers indicating adoption of recommended practices.	280	331	Count	equal to or greater than	State Fiscal Year (July 1 - June 30).	Total Reported by Staff	1890 POW Reporting System	Each regional office and Office of Accountability and Reporting	Identifying knowledge gained and implemented	Farmers, ranchers, landowners and producers	#1; #2; #3; #4; #5	
4.1.2	Number of attendees at outreach activities.	1690	1990	Count	equal to or greater than	State Fiscal Year (July 1 - June 30).	Total Reported by Staff	1890 POW Reporting System	Each regional office and Office of Accountability and Reporting	Identifying interest in specific program/activities	Children, youth, families, farmers, producers, landowners, etc.	#1; #2; #3; #4; #5	

Perf. Measure Number	Description	Base	Target	Value Type	Desired Outcome	Time Applicable	Calculation Method	Data Source	Data Location	Stakeholder Need Satisfied	Primary Stakeholder	State Funded Program Number Responsible	Notes
4.1.3	Number of acres affected by Integrated Crop Management (ICM).	864	1017	Count	equal to or greater than	State Fiscal Year (July 1 - June 30).	Total Reported by Staff	1890 POW Reporting System	Each regional office and Office of Accountability and Reporting	Identify acres affected and provide knowledge to better serve landowner	Producers, landowners and farmers	#1; #2; #3; #4; #5	
5.1 To provide nutrition education that promotes healthy living and allows opportunity for assessing healthy behaviors to deter the prevalence of obesity. State Objective: Healthy and Safe Families													
5.1.1	Number gained knowledge on healthy eating patterns.	826	972	Count	equal to or greater than	State Fiscal Year (July 1 - June 30).	Total Reported by Staff	1890 POW Reporting System	Each regional office and Office of Accountability and Reporting	Demonstrate healthy eating patterns through education	Children, youth, families, farmers, etc.	#1; #2; #3; #4; #5	
5.1.2	Number reported an intention to eat more or healthy foods.	675	795	Count	equal to or greater than	State Fiscal Year (July 1 - June 30).	Total Reported by Staff	1890 POW Reporting System	Each regional office and Office of Accountability and Reporting	Increase the knowledge of healthy eating through hands-on experiences	Children, youth, families, farmers, etc.	#1; #2; #3; #4; #5	
5.1.3	Number gained knowledge about eating more of healthy foods.	1624	1913	Count	equal to or greater than	State Fiscal Year (July 1 - June 30).	Total Reported by Staff	1890 POW Reporting System	Each regional office and Office of Accountability and Reporting	Expand skills and knowledge to change lifestyle	Children, youth, families, farmers, etc.	#1; #2; #3; #4; #5	

FY 2022

Budget Data

as submitted for the Accountability Report by:

P210 - SC STATE UNIVERSITY - PSA

State Funded Program No.	State Funded Program Title	Description of State Funded Program	(Actual) General	(Actual) Other	(Actual) Federal	(Actual) Total	(Projected) General2	(Projected) Other	(Projected) Federal4	(Projected) Total
0100.000000.000	Administration	SC State PSA (1890 Research and Extension) personnel are responsible for the overall operation of all activities associated with its land grant role at SC State University under Public Law 95-113 (Evans-Allen Research and Smith-Lever Act).	\$318,561.60	0	\$ 875,677.66	\$ 1,194,239.26	\$ 334,489.68	\$ -	\$ 919,461.54	\$ 1,253,951.22
0202.000000.000	Research & Extension	To assist small minority farmers in retaining their land and increasing their profitability with alternative enterprises. Also, to promote healthy living through nutrition and health education and provide youth and family development educational programs as well as addressing social, economic and leadership development initiatives in communities, especially rural areas.	\$ 4,521,911.43	\$ -	\$ 3,121,507.34	\$ 7,643,418.77	\$ 4,748,007.00	\$ -	\$ 3,277,582.71	\$ 8,025,589.71
9500.050000.000	State Employer Contributions	Fringe benefits paid on the salaries to the employees for SC State PSA.	\$776,455.55	\$ -	\$ 911,708.97	\$ 1,688,164.52	\$ 815,278.33	\$ -	\$ 957,294.42	\$ 1,772,572.75

FY 2022

Legal Data

as submitted for the Accountability Report by:

P210 - SC STATE UNIVERSITY - PSA

Law number	Jurisdiction	Type	Description	Purpose the law serves:	Notes:	Changes made during FY2022
95-113, Section 1444	Federal	Statute	Established authority for 1890 institutions to receive funds to continue agricultural and forestry extension at eligible colleges.	Report our agency must/may provide		No Change
95-113,Section 1445	Federal	Statute	Established authority for 1890 institutions to receive funds to continue agricultural research at eligible colleges.	Report our agency must/may provide		No Change

FY 2022

Services Data

as submitted for the 2022 Accountability Report by:

P210 - SC STATE UNIVERSITY - PSA

Description of Service	Description of Direct Customer	Customer Name	Others Impacted by Service	Division or major organizational unit providing the service.	Description of division or major organizational unit providing the service.	Primary negative impact if service not provided.	Changes made to services during FY2022	Summary of changes to services
Programs and Activities	Public: Citizens of South Carolina with a special emphasis on underserved communities.	Children; youth; adults	Farmers; ranchers; landowners; producers	1890 Research and Extension	1890 Research and Extension is an organization that provides quality of life opportunities to citizens of South Carolina with a special emphasis on limited-resource communities/individuals.	Funding will be cut and limited resource persons would suffer	No Change	

FY 2022

Partnerships Data

as submitted for the 2022 Accountability Report by:

P210 - SC STATE UNIVERSITY - PSA

Type of Partner Entity	Name of Partner Entity	Description of Partnership	Change to the partnership during the past fiscal year
K-12 Education Institute	Allendale-Fairfax High School (Low Country Region)	To provide outreach activities to help rural and urban limited-resource clients improve their quality of living in 4-H youth development, family life, small farm assistance and outreach and adult leadership and community development. Conduct program lessons, reviews and final evaluation. Secure media releases and provide classroom space. Promote participation in Extension Programs. A Memorandum of Agreement was established with the partner entity.	No Change
K-12 Education Institute	Anderson Area YMCA (Upstate Region)	To provide outreach activities to help rural and urban limited-resource clients improve their quality of living in 4-H youth development, family life, small farm assistance and outreach and adult leadership and community development. Conduct program lessons, reviews and final evaluation. Secure media releases and provide classroom space. Promote participation in Extension Programs. A Memorandum of Agreement was established with the partner entity.	No Change
Non-Governmental Organization	Beaufort Boys and Girls Club (Low Country Region)	To provide outreach activities to help rural and urban limited-resource clients improve their quality of living in 4-H youth development, family life, small farm assistance and outreach and adult leadership and community development. Conduct program lessons, reviews and final evaluation. Secure media releases and provide classroom space. Promote participation in Extension Programs. A Memorandum of Agreement was established with the partner entity.	No Change
K-12 Education Institute	Bethune-Bowman Middle School (Midlands Region)	To provide outreach activities to help rural and urban limited-resource clients improve their quality of living in 4-H youth development, family life, small farm assistance and outreach and adult leadership and community development. Conduct program lessons, reviews and final evaluation. Secure media releases and provide classroom space. Promote participation in Extension Programs. A Memorandum of Agreement was established with the partner entity.	No Change
K-12 Education Institute	Branchville Middle School (Midlands Regions)	To provide outreach activities to help rural and urban limited-resource clients improve their quality of living in 4-H youth development, family life, small farm assistance and outreach and adult leadership and community development. Conduct program lessons, reviews and final evaluation. Secure media releases and provide classroom space. Promote participation in Extension Programs. A Memorandum of Agreement was established with the partner entity.	No Change
Non-Governmental Organization	Bright Star Learning (Midlands Region)	To provide outreach activities to help rural and urban limited-resource clients improve their quality of living in 4-H youth development, family life, small farm assistance and outreach and adult leadership and community development. Conduct program lessons, reviews and final evaluation. Secure media releases and provide classroom space. Promote participation in Extension Programs. A Memorandum of Agreement was established with the partner entity.	No Change
K-12 Education Institute	Calhoun Academy of the Arts (Midlands Region)	To provide outreach activities to help rural and urban limited-resource clients improve their quality of living in 4-H youth development, family life, small farm assistance and outreach and adult leadership and community development. Conduct program lessons, reviews and final evaluation. Secure media releases and provide classroom space. Promote participation in Extension Programs. A Memorandum of Agreement was established with the partner entity.	No Change
Non-Governmental Organization	Camp Wildwood (Low Country Region)	To provide outreach activities to help rural and urban limited-resource clients improve their quality of living in 4-H youth development, family life, small farm assistance and outreach and adult leadership and community development. Conduct program lessons, reviews and final evaluation. Secure media releases and provide classroom space. Promote participation in Extension Programs. A Memorandum of Agreement was established with the partner entity.	No Change

Type of Partner Entity	Name of Partner Entity	Description of Partnership	Change to the partnership during the past fiscal year
Non-Governmental Organization	Cannon-Bridge Boys & Girls Club (Midlands Region)	To provide outreach activities to help rural and urban limited-resource clients improve their quality of living in 4-H youth development, family life, small farm assistance and outreach and adult leadership and community development. Conduct program lessons, reviews and final evaluation. Secure media releases and provide classroom space. Promote participation in Extension Programs. A Memorandum of Agreement was established with the partner entity.	No Change
K-12 Education Institute	Carver-Edisto Middle School (Midlands Region)	To provide outreach activities to help rural and urban limited-resource clients improve their quality of living in 4-H youth development, family life, small farm assistance and outreach and adult leadership and community development. Conduct program lessons, reviews and final evaluation. Secure media releases and provide classroom space. Promote participation in Extension Programs. A Memorandum of Agreement was established with the partner entity.	No Change
Non-Governmental Organization	Charity Springs Community Church (Anderson) Upstate Region)	To provide outreach activities to help rural and urban limited-resource clients improve their quality of living in 4-H youth development, family life, small farm assistance and outreach and adult leadership and community development. Conduct program lessons, reviews and final evaluation. Secure media releases and provide classroom space. Promote participation in Extension Programs. A Memorandum of Agreement was established with the partner entity.	No Change
K-12 Education Institute	Charleston County School District (Coastal Region)	To provide outreach activities to help rural and urban limited-resource clients improve their quality of living in 4-H youth development, family life, small farm assistance and outreach and adult leadership and community development. Conduct program lessons, reviews and final evaluation. Secure media releases and provide classroom space. Promote participation in Extension Programs. A Memorandum of Agreement was established with the partner entity.	No Change
K-12 Education Institute	Colleton County Middle School (Low Country Region)	To provide outreach activities to help rural and urban limited-resource clients improve their quality of living in 4-H youth development, family life, small farm assistance and outreach and adult leadership and community development. Conduct program lessons, reviews and final evaluation. Secure media releases and provide classroom space. Promote participation in Extension Programs. A Memorandum of Agreement was established with the partner entity.	No Change
K-12 Education Institute	Colleton County School District Afterschool (Low Country Region)	To provide outreach activities to help rural and urban limited-resource clients improve their quality of living in 4-H youth development, family life, small farm assistance and outreach and adult leadership and community development. Conduct program lessons, reviews and final evaluation. Secure media releases and provide classroom space. Promote participation in Extension Programs. A Memorandum of Agreement was established with the partner entity.	No Change
Non-Governmental Organization	Colleton Parks and Recreation (Low Country Region)	To provide outreach activities to help rural and urban limited-resource clients improve their quality of living in 4-H youth development, family life, small farm assistance and outreach and adult leadership and community development. Conduct program lessons, reviews and final evaluation. Secure media releases and provide classroom space. Promote participation in Extension Programs. A Memorandum of Agreement was established with the partner entity.	No Change
Non-Governmental Organization	Colleton Sports Group (Low Country Region)	To provide outreach activities to help rural and urban limited-resource clients improve their quality of living in 4-H youth development, family life, small farm assistance and outreach and adult leadership and community development. Conduct program lessons, reviews and final evaluation. Secure media releases and provide classroom space. Promote participation in Extension Programs. A Memorandum of Agreement was established with the partner entity.	No Change
Non-Governmental Organization	Concord Baptist Church (Anderson) (Upstate Region)	To provide outreach activities to help rural and urban limited-resource clients improve their quality of living in 4-H youth development, family life, small farm assistance and outreach and adult leadership and community development. Conduct program lessons, reviews and final evaluation. Secure media releases and provide classroom space. Promote participation in Extension Programs. A Memorandum of Agreement was established with the partner entity.	No Change

Type of Partner Entity	Name of Partner Entity	Description of Partnership	Change to the partnership during the past fiscal year
State Government	Dale Apartment Complex (Low Country Region)	To provide outreach activities to help rural and urban limited-resource clients improve their quality of living in 4-H youth development, family life, small farm assistance and outreach and adult leadership and community development. Conduct program lessons, reviews and final evaluation. Secure media releases and provide classroom space. Promote participation in Extension Programs. A Memorandum of Agreement was established with the partner entity.	No Change
Non-Governmental Organization	Distinctive Learning (Midlands Regions)	To provide outreach activities to help rural and urban limited-resource clients improve their quality of living in 4-H youth development, family life, small farm assistance and outreach and adult leadership and community development. Conduct program lessons, reviews and final evaluation. Secure media releases and provide classroom space. Promote participation in Extension Programs. A Memorandum of Agreement was established with the partner entity.	No Change
K-12 Education Institute	Edisto High School (Midlands Region)	To provide outreach activities to help rural and urban limited-resource clients improve their quality of living in 4-H youth development, family life, small farm assistance and outreach and adult leadership and community development. Conduct program lessons, reviews and final evaluation. Secure media releases and provide classroom space. Promote participation in Extension Programs. A Memorandum of Agreement was established with the partner entity.	No Change
K-12 Education Institute	Estill High School (Low Country Region)	To provide outreach activities to help rural and urban limited-resource clients improve their quality of living in 4-H youth development, family life, small farm assistance and outreach and adult leadership and community development. Conduct program lessons, reviews and final evaluation. Secure media releases and provide classroom space. Promote participation in Extension Programs. A Memorandum of Agreement was established with the partner entity.	No Change
K-12 Education Institute	Fairfax Elementary School (Low Country Region)	To provide outreach activities to help rural and urban limited-resource clients improve their quality of living in 4-H youth development, family life, small farm assistance and outreach and adult leadership and community development. Conduct program lessons, reviews and final evaluation. Secure media releases and provide classroom space. Promote participation in Extension Programs. A Memorandum of Agreement was established with the partner entity.	No Change
K-12 Education Institute	Felton Laboratory School (Midlands Region)	To provide outreach activities to help rural and urban limited-resource clients improve their quality of living in 4-H youth development, family life, small farm assistance and outreach and adult leadership and community development. Conduct program lessons, reviews and final evaluation. Secure media releases and provide classroom space. Promote participation in Extension Programs. A Memorandum of Agreement was established with the partner entity.	No Change
Non-Governmental Organization	Fruits of the Spirit (Upstate Region)	To provide outreach activities to help rural and urban limited-resource clients improve their quality of living in 4-H youth development, family life, small farm assistance and outreach and adult leadership and community development. Conduct program lessons, reviews and final evaluation. Secure media releases and provide classroom space. Promote participation in Extension Programs. A Memorandum of Agreement was established with the partner entity.	No Change
K-12 Education Institute	Glenview Middle School (Upstate Region)	To provide outreach activities to help rural and urban limited-resource clients improve their quality of living in 4-H youth development, family life, small farm assistance and outreach and adult leadership and community development. Conduct program lessons, reviews and final evaluation. Secure media releases and provide classroom space. Promote participation in Extension Programs. A Memorandum of Agreement was established with the partner entity.	No Change
K-12 Education Institute	GREAT Ballers Summer Camp/Colleton School District (Low Country Region)	To provide outreach activities to help rural and urban limited-resource clients improve their quality of living in 4-H youth development, family life, small farm assistance and outreach and adult leadership and community development. Conduct program lessons, reviews and final evaluation. Secure media releases and provide classroom space. Promote participation in Extension Programs. A Memorandum of Agreement was established with the partner entity.	No Change

Type of Partner Entity	Name of Partner Entity	Description of Partnership	Change to the partnership during the past fiscal year
K-12 Education Institute	Hampton Boys Club Summer Camp (Low Country Region)	To provide outreach activities to help rural and urban limited-resource clients improve their quality of living in 4-H youth development, family life, small farm assistance and outreach and adult leadership and community development. Conduct program lessons, reviews and final evaluation. Secure media releases and provide classroom space. Promote participation in Extension Programs. A Memorandum of Agreement was established with the partner entity.	No Change
K-12 Education Institute	Hardeeville Elementary School (Low Country Region)	To provide outreach activities to help rural and urban limited-resource clients improve their quality of living in 4-H youth development, family life, small farm assistance and outreach and adult leadership and community development. Conduct program lessons, reviews and final evaluation. Secure media releases and provide classroom space. Promote participation in Extension Programs. A Memorandum of Agreement was established with the partner entity.	No Change
K-12 Education Institute	Hardeeville Middle School (Low Country Region)	To provide outreach activities to help rural and urban limited-resource clients improve their quality of living in 4-H youth development, family life, small farm assistance and outreach and adult leadership and community development. Conduct program lessons, reviews and final evaluation. Secure media releases and provide classroom space. Promote participation in Extension Programs. A Memorandum of Agreement was established with the partner entity.	No Change
K-12 Education Institute	Hardeeville-Ridgeland Middle School (Low Country Region)	To provide outreach activities to help rural and urban limited-resource clients improve their quality of living in 4-H youth development, family life, small farm assistance and outreach and adult leadership and community development. Conduct program lessons, reviews and final evaluation. Secure media releases and provide classroom space. Promote participation in Extension Programs. A Memorandum of Agreement was established with the partner entity.	No Change
K-12 Education Institute	Hendersonville Elementary School (Low Country Region)	To provide outreach activities to help rural and urban limited-resource clients improve their quality of living in 4-H youth development, family life, small farm assistance and outreach and adult leadership and community development. Conduct program lessons, reviews and final evaluation. Secure media releases and provide classroom space. Promote participation in Extension Programs. A Memorandum of Agreement was established with the partner entity.	No Change
K-12 Education Institute	Holly Hill Roberts Middle (Midlands Region)	To provide outreach activities to help rural and urban limited-resource clients improve their quality of living in 4-H youth development, family life, small farm assistance and outreach and adult leadership and community development. Conduct program lessons, reviews and final evaluation. Secure media releases and provide classroom space. Promote participation in Extension Programs. A Memorandum of Agreement was established with the partner entity.	No Change
K-12 Education Institute	Hunter-Kinard Tyler School (Midlands Region)	To provide outreach activities to help rural and urban limited-resource clients improve their quality of living in 4-H youth development, family life, small farm assistance and outreach and adult leadership and community development. Conduct program lessons, reviews and final evaluation. Secure media releases and provide classroom space. Promote participation in Extension Programs. A Memorandum of Agreement was established with the partner entity.	No Change
Non-Governmental Organization	Masters Keys (Midlands Region)	To provide outreach activities to help rural and urban limited-resource clients improve their quality of living in 4-H youth development, family life, small farm assistance and outreach and adult leadership and community development. Conduct program lessons, reviews and final evaluation. Secure media releases and provide classroom space. Promote participation in Extension Programs. A Memorandum of Agreement was established with the partner entity.	No Change
K-12 Education Institute	Men of Distinction Colleton High School (Low Country Region)	To provide outreach activities to help rural and urban limited-resource clients improve their quality of living in 4-H youth development, family life, small farm assistance and outreach and adult leadership and community development. Conduct program lessons, reviews and final evaluation. Secure media releases and provide classroom space. Promote participation in Extension Programs. A Memorandum of Agreement was established with the partner entity.	No Change

Type of Partner Entity	Name of Partner Entity	Description of Partnership	Change to the partnership during the past fiscal year
Non-Governmental Organization	Mount Pleasant Community Center (Coastal Region)	To provide outreach activities to help rural and urban limited-resource clients improve their quality of living in 4-H youth development, family life, small farm assistance and outreach and adult leadership and community development. Conduct program lessons, reviews and final evaluation. Secure media releases and provide classroom space. Promote participation in Extension Programs. A Memorandum of Agreement was established with the partner entity.	No Change
Non-Governmental Organization	Mountainview Baptist Church (Upstate Region)	To provide outreach activities to help rural and urban limited-resource clients improve their quality of living in 4-H youth development, family life, small farm assistance and outreach and adult leadership and community development. Conduct program lessons, reviews and final evaluation. Secure media releases and provide classroom space. Promote participation in Extension Programs. A Memorandum of Agreement was established with the partner entity.	No Change
K-12 Education Institute	New Destiny Center (Low Country Region)	To provide outreach activities to help rural and urban limited-resource clients improve their quality of living in 4-H youth development, family life, small farm assistance and outreach and adult leadership and community development. Conduct program lessons, reviews and final evaluation. Secure media releases and provide classroom space. Promote participation in Extension Programs. A Memorandum of Agreement was established with the partner entity.	No Change
Non-Governmental Organization	New Foundations Home for Children (Upstate Region)	To provide outreach activities to help rural and urban limited-resource clients improve their quality of living in 4-H youth development, family life, small farm assistance and outreach and adult leadership and community development. Conduct program lessons, reviews and final evaluation. Secure media releases and provide classroom space. Promote participation in Extension Programs. A Memorandum of Agreement was established with the partner entity.	No Change
Non-Governmental Organization	Nicholtown Community Center - Greenville (Upstate Region)	To provide outreach activities to help rural and urban limited-resource clients improve their quality of living in 4-H youth development, family life, small farm assistance and outreach and adult leadership and community development. Conduct program lessons, reviews and final evaluation. Secure media releases and provide classroom space. Promote participation in Extension Programs. A Memorandum of Agreement was established with the partner entity.	No Change
K-12 Education Institute	North District Middle School (Midlands Region)	To provide outreach activities to help rural and urban limited-resource clients improve their quality of living in 4-H youth development, family life, small farm assistance and outreach and adult leadership and community development. Conduct program lessons, reviews and final evaluation. Secure media releases and provide classroom space. Promote participation in Extension Programs. A Memorandum of Agreement was established with the partner entity.	No Change
K-12 Education Institute	Northside Elementary School (Low Country Region)	To provide outreach activities to help rural and urban limited-resource clients improve their quality of living in 4-H youth development, family life, small farm assistance and outreach and adult leadership and community development. Conduct program lessons, reviews and final evaluation. Secure media releases and provide classroom space. Promote participation in Extension Programs. A Memorandum of Agreement was established with the partner entity.	No Change
Non-Governmental Organization	Orangeburg Area Development Center (Midlands Region)	To provide outreach activities to help rural and urban limited-resource clients improve their quality of living in 4-H youth development, family life, small farm assistance and outreach and adult leadership and community development. Conduct program lessons, reviews and final evaluation. Secure media releases and provide classroom space. Promote participation in Extension Programs. A Memorandum of Agreement was established with the partner entity.	No Change
Non-Governmental Organization	Renewed Faith Summer Camp (Low Country Region)	To provide outreach activities to help rural and urban limited-resource clients improve their quality of living in 4-H youth development, family life, small farm assistance and outreach and adult leadership and community development. Conduct program lessons, reviews and final evaluation. Secure media releases and provide classroom space. Promote participation in Extension Programs. A Memorandum of Agreement was established with the partner entity.	No Change

Type of Partner Entity	Name of Partner Entity	Description of Partnership	Change to the partnership during the past fiscal year
Non-Governmental Organization	Salvation Army Boys & Girls Club - Anderson (Upstate Region)	To provide outreach activities to help rural and urban limited-resource clients improve their quality of living in 4-H youth development, family life, small farm assistance and outreach and adult leadership and community development. Conduct program lessons, reviews and final evaluation. Secure media releases and provide classroom space. Promote participation in Extension Programs. A Memorandum of Agreement was established with the partner entity.	No Change
K-12 Education Institute	Southwood Academy of the Arts Middle School (Upstate Region)	To provide outreach activities to help rural and urban limited-resource clients improve their quality of living in 4-H youth development, family life, small farm assistance and outreach and adult leadership and community development. Conduct program lessons, reviews and final evaluation. Secure media releases and provide classroom space. Promote participation in Extension Programs. A Memorandum of Agreement was established with the partner entity.	No Change
Non-Governmental Organization	Westside Community Center (Upstate Region)	To provide outreach activities to help rural and urban limited-resource clients improve their quality of living in 4-H youth development, family life, small farm assistance and outreach and adult leadership and community development. Conduct program lessons, reviews and final evaluation. Secure media releases and provide classroom space. Promote participation in Extension Programs. A Memorandum of Agreement was established with the partner entity.	No Change
K-12 Education Institute	Young Men of Hope Club (Low Country Region)	To provide outreach activities to help rural and urban limited-resource clients improve their quality of living in 4-H youth development, family life, small farm assistance and outreach and adult leadership and community development. Conduct program lessons, reviews and final evaluation. Secure media releases and provide classroom space. Promote participation in Extension Programs. A Memorandum of Agreement was established with the partner entity.	No Change
Non-Governmental Organization	Youth Generation Matters (Low Country Region)	To provide outreach activities to help rural and urban limited-resource clients improve their quality of living in 4-H youth development, family life, small farm assistance and outreach and adult leadership and community development. Conduct program lessons, reviews and final evaluation. Secure media releases and provide classroom space. Promote participation in Extension Programs. A Memorandum of Agreement was established with the partner entity.	No Change
K-12 Education Institute	Carvers Bay Middle Middle School	To provide outreach activities to help rural and urban limited-resource clients improve their quality of living in 4-H youth development, family life, small farm assistance and outreach and adult leadership and community development. Conduct program lessons, reviews and final evaluation. Secure media releases and provide classroom space. Promote participation in Extension Programs. A Memorandum of Agreement was established with the partner entity.	No Change
K-12 Education Institute	Greeleyville Elementary School	To provide outreach activities to help rural and urban limited-resource clients improve their quality of living in 4-H youth development, family life, small farm assistance and outreach and adult leadership and community development. Conduct program lessons, reviews and final evaluation. Secure media releases and provide classroom space. Promote participation in Extension Programs. A Memorandum of Agreement was established with the partner entity.	No Change
K-12 Education Institute	Kenneth Gardner Elementary School	To provide outreach activities to help rural and urban limited-resource clients improve their quality of living in 4-H youth development, family life, small farm assistance and outreach and adult leadership and community development. Conduct program lessons, reviews and final evaluation. Secure media releases and provide classroom space. Promote participation in Extension Programs. A Memorandum of Agreement was established with the partner entity.	No Change
K-12 Education Institute	Scott's Branch Middle/High School	To provide outreach activities to help rural and urban limited-resource clients improve their quality of living in 4-H youth development, family life, small farm assistance and outreach and adult leadership and community development. Conduct program lessons, reviews and final evaluation. Secure media releases and provide classroom space. Promote participation in Extension Programs. A Memorandum of Agreement was established with the partner entity.	No Change
Non-Government Organization	Shiloh Project LIFT	To provide after-school programs to limited-resource participants to improve their quality of life. A Memorandum of Agreement was established with the partner entity.	No Change

Type of Partner Entity	Name of Partner Entity	Description of Partnership	Change to the partnership during the past fiscal year
Local Government	Town of Lane	To provide outreach programs to patients in the community. A Memorandum of Agreement was established with the partner entity.	No Change
Local Government	City of Florence Recreation Services	To serve limited resource students with STREAM activity education within the city and surrounding areas. Promote participation in Extension Programs. A Memorandum of Agreement was established with the partner entity.	No Change
Non-Government Organization	Avery C. Thompson Community Center	To provide leadership and coordinate after-school and summer activities with a focus on technology and leadership to the community. A Memorandum of Agreement was established with the partner entity.	No Change

FY 2022

Reports Data

as submitted for the Accountability Report by:

P210 - SC STATE UNIVERSITY - PSA

Report Name	Law Number (if applicable)	Summary of information requested in the report	Date of most recent submission DURING the past fiscal year	Reporting Frequency	Type of entity/entities	Method to access the report	Direct access hyperlink or agency contact (if not provided to LSA for posting online)	Changes to this report during the past fiscal year	Explanation why a report wasn't submitted
1890 Scholarship Program	P. L. 115-34	Defines the progress made during the year with the program participants and their accomplishments.	April-22	Annually	Entity within federal government	Electronic copy available upon request	Maroharan.muthusamy@usda.gov	No Change	
Agricultural Research at 1890 Land-Grant Institutions		Supports continuing agriculture research at colleges eligible to receive funds under the Act of August 30, 1890. Conduct research, printing, disseminate results, contribute to retirement, purchase and rental of land and construction, acquisitions, repairs, etc. of buildings.	September-21	Annually	Entity within federal government	Available on another website	http://www.nifa.usda.gov/program/agricultural-research-1890-land-grant-institutions	No Change	
Budget Plan		Identifying information relating to the upcoming fiscal year budget request process.	September-21	Annually	South Carolina state agency or agencies	Electronic file available upon request	Kevin.etheridge@admin.sc.gov	No Change	
EFNEP Final Budget 2021		Identifies the funding spent during the listed year.	October-21	Annually	Entity within federal government	Electronic copy available upon request	Electronic copy available upon request	No Change	
EFNEP Preliminary Budget 2022		Identifies the funding to be spent in the upcoming year.	February-22	Annually	Entity within federal government	Electronic copy available upon request	Electronic copy available upon request	No Change	
ES 237 Report (4-H)		A workbook of 5 spreadsheets designed to complete the State 4-H enrollment data.	January-22	Annually	Entity within federal government	Electronic copy available upon request	pardern@clermson.edu	No Change	
Expanded Food and Nutrition Education Program (EFNEP)		Carrying out a program of extension activities designed to employ and train professional and paraprofessional aides to engage in direct nutrition education of low-income families and in other appropriate nutrition education programs.	September-21	Annually	Entity within federal government	Available on another website	www.nifa.usda.gov/efme	No Change	
Plan of Work (POW) Annual Combined Research and Extension Accomplishments and Results Report		A tool used for data collection, including the Annual Report of Accomplishments. A vehicle for Land Grant Universities to report accomplishments of Agriculture Research and Extension programs and results.	May-22	Annually	Entity within federal government	Available on another website	www.nifa.usda.gov/tool/pow	No Change	
Plan of Work (POW) Annual Report Plan		A five year tool used to plan programs and activities. A vehicle for Land Grant Universities to report plans of Agriculture Research and Extension programs.	May-22	Annually	Entity within federal government	Available on another website	www.nifa.usda.gov/tool/pow	No Change	
REReport (AD-419 Research Funds and Staff Support)		Documents the performance plans of the 1890 Program for continuous improvement and quality of service. It is linked to the University's mission, goals and objectives. The information provides for efficiency and effectiveness of the strategic plan.	January-22	Annually	Entity within federal government	Available on agency's website	http://www.scsu.edu	No Change	

Report Name	Law Number (if applicable)	Summary of information requested in the report	Date of most recent submission DURING the past fiscal year	Reporting Frequency	Type of entity/entities	Method to access the report	Direct access hyperlink or agency contact (if not provided to LSA for posting online)	Changes to this report during the past fiscal year	Explanation why a report wasn't submitted
Renewable Resources Extension Act (RREA)		Data collected to develop plans of work and report program accomplishments and impacts.	February-22	Annually	Entity within federal government	Available on agency's website	https://nifa.usda.gov/program/renewable-resources-extension-act-capacity-grant	No Change	
Request for Applications (RFA)		An electronically submitted document giving notice to submit applications for program funding.	June-22	Annually	Entity within federal government	Available on another website	www.grants.gov	No Change	
RREA: Popular Report		A one-page document used as support for collecting and compiling data for submission to legislators.	December-21	Annually	Entity within federal government	Available on agency's website	https://nifa.usda.gov/program/renewable-resources-extension-act-capacity-grant	No Change	
RREA: Progress Report		Communicates program effectiveness to its funders, stakeholders and other clients.	August-21	Annually	Entity within federal government	Available on agency's website	https://nifa.usda.gov/program/renewable-resources-extension-act-capacity-grant	No Change	
SC State PSA Accountability Report		Identifies an agency's goals, mission, objectives and measuring performance of the objectives. Also, link the expenditures to the program areas.	September-21	Annually	South Carolina state agency or agencies	Available on another website	AAR@admin.sc.gov	No Change	
SC State University Assessment Plan Report		Establishes the agency's budget request for the Governor	June-22	Annually	South Carolina state agency or agencies	Available on another website	www.admin.sc.gov/budget/agency-budget-plans	No Change	
SC State University Assessment Report		Documents the actual work performance of the 1890 Program for the fiscal year. Identifying the strategies and results for the year	June-22	Annually	South Carolina state agency or agencies	Available on agency's website	http://www.scsu.edu	No Change	
WebNEERS Year End Data Expanded Food and Nutrition Education Program (EFNEP)		An end of the fiscal year report of the accomplishments to low-income youth and families dealing with food and nutrition and physical activities.	November-21	Annually	Entity within federal government	Electronic copy available upon request	EFNEP-admin@webneers.net	No Change	