



# **2023 Annual Accountability Report**

---

**Lander University**

**Agency Code: H210**

---

# Table of Contents

Agency’s Discussion and Analysis .....	1
Agency Organization Chart .....	2
Reorganization and Compliance .....	11
Strategic Plan Results .....	12
Strategic Plan Development .....	14
Budget Data .....	15
Legal Data .....	16
Services Data.....	17
Partnerships Data.....	18
Reports Data .....	19
Submission Form.....	22

<b>AGENCY NAME:</b>	<b>Lander University</b>	<b>SECTION:</b>	<b>018</b>
<b>AGENCY CODE:</b>	<b>H210</b>		

## AGENCY'S DISCUSSION AND ANALYSIS

# LANDER UNIVERSITY

9/14/2023

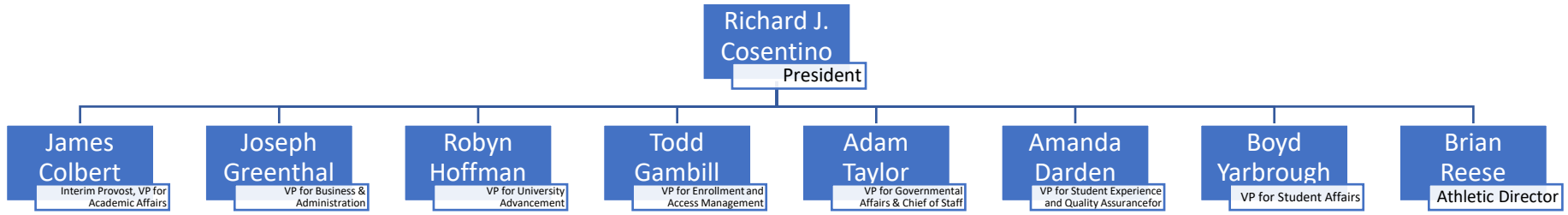
## ACCOUNTABILITY REPORT – OUTCOMES FOR FY2023

*(JULY 1, 2022 – JUNE 30, 2023)*

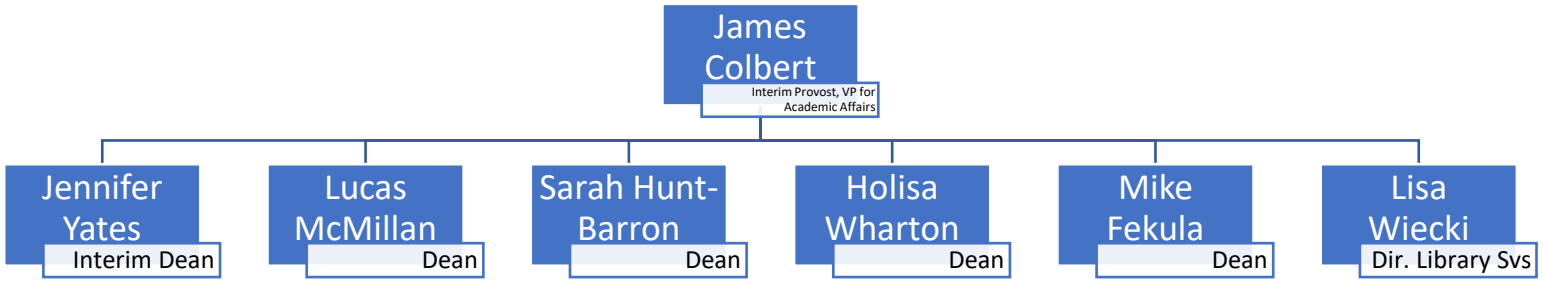
1. Board of Trustee members were engaged throughout the year in the direction and development of the seven-year strategic plan's first-year framework.
2. Developed and codified the process for hiring and deployment of full-time and part-time employees (faculty and staff).
3. Recruited Lander University's first Vice President for Student Experience and Quality Assurance.
4. Restructured and reorganized the administrative units that support students.
5. Increased the Fall 2022 first-time freshman retention rate by 3%, exceeding a goal of 2%.
6. Recruited a new Vice President for University Advancement.
7. Developed and approved four new high-demand, market-driven programs:
  - Bachelor of Science (BS), Digital Media Production
  - Bachelor of Science (BS), Medical Biology
  - Master of Arts in Teaching (MAT), Multi-Categorical Special Education
  - Master of Science (MS), Exercise Science (Emphases in Sport Performance and Rehabilitation, Clinical Exercise Physiology, and Health and Wellness)
8. Increased the number of available parking spaces for students by 6%.

<b>AGENCY NAME:</b>	Lander University		
<b>AGENCY CODE:</b>	H210	<b>SECTION:</b>	018

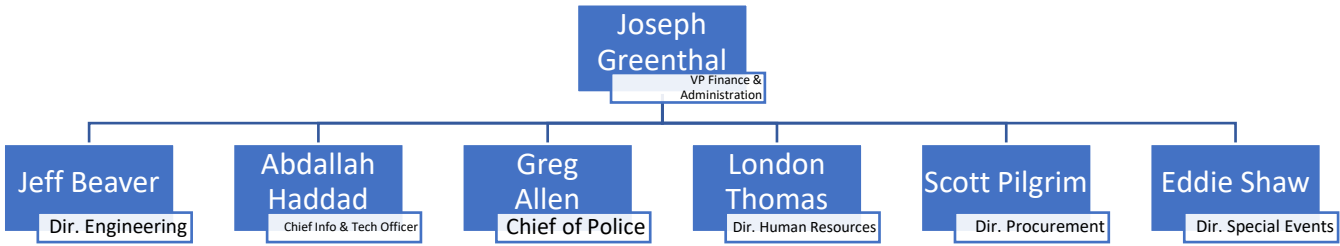
## AGENCY ORGANIZATIONAL CHART



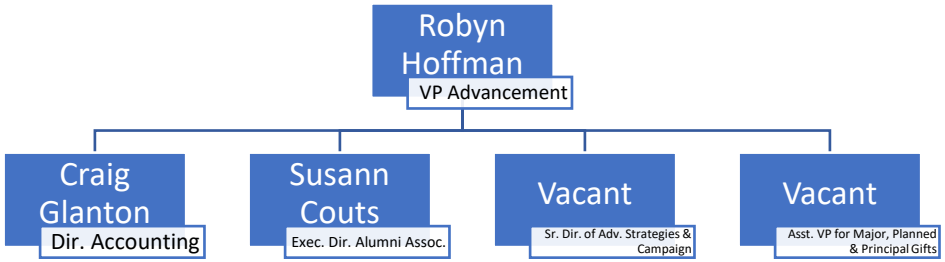
<b>AGENCY NAME:</b>	Lander University		
<b>AGENCY CODE:</b>	H210	<b>SECTION:</b>	018



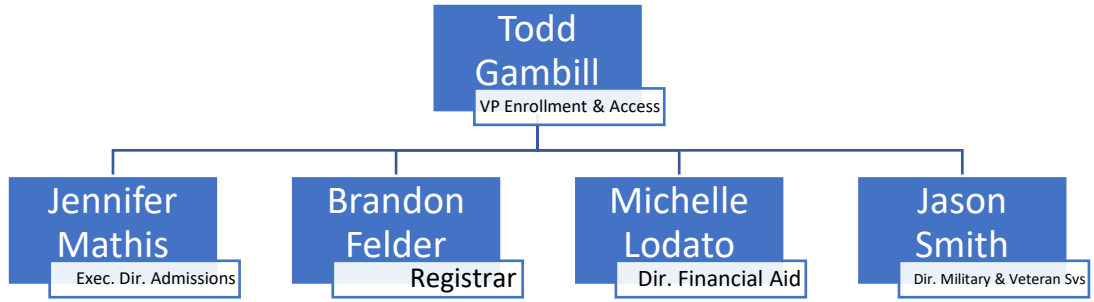
<b>AGENCY NAME:</b>	Lander University		
<b>AGENCY CODE:</b>	H210	<b>SECTION:</b>	018



<b>AGENCY NAME:</b>	Lander University		
<b>AGENCY CODE:</b>	H210	<b>SECTION:</b>	018

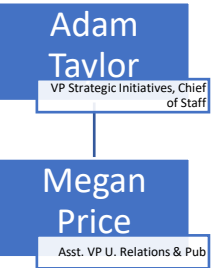


<b>AGENCY NAME:</b>	Lander University		
<b>AGENCY CODE:</b>	H210	<b>SECTION:</b>	018

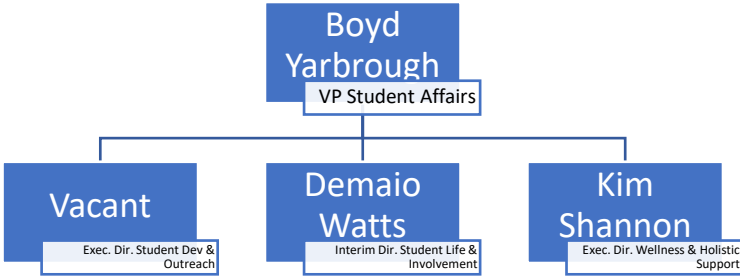




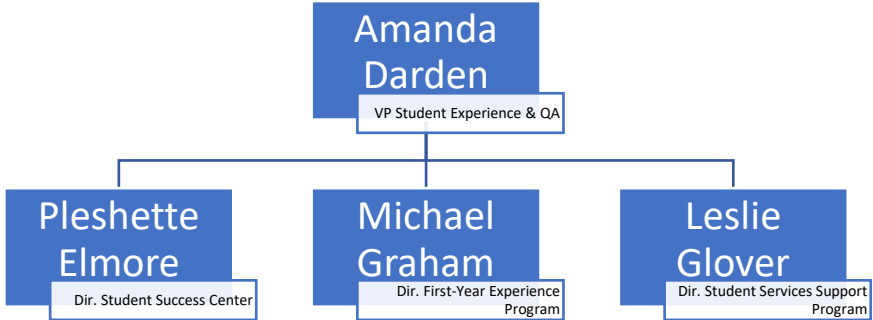
<b>AGENCY NAME:</b>	Lander University		
<b>AGENCY CODE:</b>	H210	<b>SECTION:</b>	018



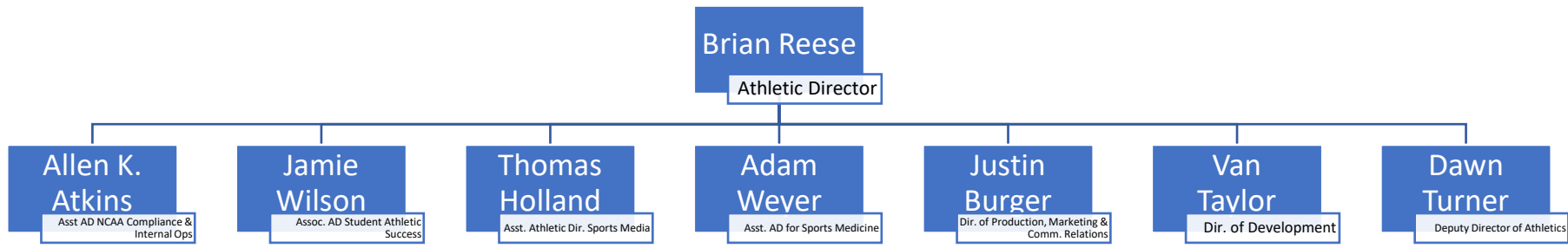
<b>AGENCY NAME:</b>	Lander University		
<b>AGENCY CODE:</b>	H210	<b>SECTION:</b>	018



<b>AGENCY NAME:</b>	Lander University		
<b>AGENCY CODE:</b>	H210	<b>SECTION:</b>	018



<b>AGENCY NAME:</b>	Lander University		
<b>AGENCY CODE:</b>	H210	<b>SECTION:</b>	018



# 2023

## Reorganization and Compliance

as submitted for the Accountability Report by:

### H210 - Lander University

#### Primary Contact

First Name	Last Name	Role/Title	Email Address	Phone
Matt	Braaten	AVP Planning, Analytics & Decision-support	mbraaten@lander.edu	864-388-8827

#### Secondary Contact

First Name	Last Name	Role/Title	Email Address	Phone
Ashley	Wilkie	Budget Director	awilkie@lander.edu	864-388-8305

#### Agency Mission

Adopted in:

2016

Lander University offers high-demand and market-driven programs to ambitious and talented students in South Carolina and beyond. These programs are delivered in a rich liberal arts environment to produce highly qualified and marketable graduates.

#### Agency Vision

Adopted in:

2021

All Lander University graduates are broadly educated, well-informed, equipped for responsible participation in the civic lives of their communities, and prepared to continue their education or launch their careers

#### Recommendations for reorganization requiring legislative change:

None

#### Agency intentions for other major reorganization to divisions, departments, or programs to allow the agency to operate more effectively and efficiently in the succeeding fiscal year:

None

#### Significant events related to the agency that occurred in FY2023

Description of Event	Start	End	Agency Measures Impacted	Other Impacts
No significant events affected performance measures.				

Is the agency in compliance with S.C. Code Ann. § 2-1-220, which requires submission of certain reports to the Legislative Services Agency for publication online and the State Library? (See also S.C. Code Ann. § 60-2-20).

Yes

Reason agency is out of compliance: (if applicable)

Is the agency in compliance with various requirements to transfer its records, including electronic ones, to the Department of Archives and History? See the Public Records Act (S.C. Code Ann. § 20-1-10 through 20-1-180) and the South Carolina Uniform Electronic Transactions Act (S.C. Code Ann. § 26-6-10 through 26-10-210).

Yes

Does the law allow the agency to promulgate regulations?

No

Law number(s) which gives the agency the authority to promulgate regulations:

Has the agency promulgated any regulations?

No

Is the agency in compliance with S.C. Code Ann. § 1-23-120 (J), which requires an agency to conduct a formal review of its regulations every five years?

Yes

(End of Reorganization and Compliance Section)

# FY2023

## Strategic Plan Results

as submitted for the Accountability Report by:

H210 - Lander University

- Goal 1 A governing board regularly engaged in the review of the mission, vision, and policy of the university
- Goal 2 Highly-valued State and local community partner
- Goal 3 Strategic, balanced recruitment and deployment of state employees
- Goal 4 Increase the percentage of all students who advance and succeed at Lander University
- Goal 5 Advancement operations optimized to full support the University's mission
- Goal 6 High-demand, market-driven programs
- Goal 7 Facilities positioned for growth and efficient utilization

Perf. Measure Number	Description	Base	Target	Actual	Value Type	Desired Outcome	Time Applicable	Calculation Method	Data Source	Data Location	Stakeholder Need Satisfied	Primary Stakeholder	State Funded Program Number Responsible	Notes
<b>1.1 Develop a new strategic plan</b>		<b>State Objective: Education, Training, and Human Development</b>												
1.1.1	By June 30, 2023, in collaboration with the Lander University Board of Trustees, develop, approve and publish a new 7-year strategic plan (7/1/2023 – 6/30/2030)	0%	100%	100%	Percent complete	Complete	State Fiscal Year	0	Internal records.	Office of the President	Access and support from a South Carolina regional comprehensive university to obtain an undergraduate or graduate degree.	General Public: Students who are high school graduates, veterans, or adults who seek to continue their education or launch their career.	N/A	In Fiscal Year 2023, Board of Trustees members were engaged in the discussion and direction of the seven-year strategic plan's first-year framework.
<b>2.1 Launch and develop the South Carolina Institute for the Prevention of Sexual Violence on College Campuses (SCIPSVCC)</b>		<b>State Objective: Education, Training, and Human Development</b>												
2.1.1	By June 30, 2023, develop a mission and vision the SCIPSVCC.	0%	100%	100%	Percent complete	Complete	State Fiscal Year	0	Internal records.	Office of the President	Access and support from a South Carolina regional comprehensive university to obtain an undergraduate or graduate degree.	General Public: Students who are high school graduates, veterans, or adults who seek to continue their education or launch their career.	N/A	
2.1.2	By June 30, 2023, recruit an Executive Director to the SCIPSVCC.	0%	100%	95%	Percent complete	Complete	State Fiscal Year	0	Internal records.	Office of the President	Access and support from a South Carolina regional comprehensive university to obtain an undergraduate or graduate degree.	General Public: Students who are high school graduates, veterans, or adults who seek to continue their education or launch their career.	N/A	Interviews are ongoing. New director to be selected before end of Fiscal Year 2024.
2.1.3	By June 30, 2023, develop a national advisory board to the SCIPSVCC.	0%	100%	80%	Percent complete	Complete	State Fiscal Year	0	Internal records.	Office of the President	Access and support from a South Carolina regional comprehensive university to obtain an undergraduate or graduate degree.	General Public: Students who are high school graduates, veterans, or adults who seek to continue their education or launch their career.	N/A	Partially complete. Waiting on selection of new director to assist in the recruiting of national advisory board members.
2.1.4	By June 30, 2023, develop a website for the SCIPSVCC.	0%	100%	100%	Percent complete	Complete	State Fiscal Year	0	Internal records.	Office of the President	Access and support from a South Carolina regional comprehensive university to obtain an undergraduate or graduate degree.	General Public: Students who are high school graduates, veterans, or adults who seek to continue their education or launch their career.	N/A	
<b>3.1 Optimize the hiring and deployment of state employees</b>		<b>State Objective: Education, Training, and Human Development</b>												
3.1.1	By June 30, 2023, develop and codify the process for hiring and deployment of full-time faculty.	0%	100%	100%	Percent complete	Complete	State Fiscal Year	0	Internal records.	Office of the President, Office of Academic Affairs	Access and support from a South Carolina regional comprehensive university to obtain an undergraduate or graduate degree.	General Public: Students who are high school graduates, veterans, or adults who seek to continue their education or launch their career.	N/A	

Perf. Measure Number	Description	Base	Target	Actual	Value Type	Desired Outcome	Time Applicable	Calculation Method	Data Source	Data Location	Stakeholder Need Satisfied	Primary Stakeholder	State Funded Program Number Responsible	Notes
3.1.2	By June 30, 2023, develop and codify the process for hiring and deployment of part-time faculty.	0%	100%	100%	Percent complete	Complete	State Fiscal Year	0	Internal records.	Office of the President, Office of Academic Affairs	Access and support from a South Carolina regional comprehensive university to obtain an undergraduate or graduate degree.	General Public: Students who are high school graduates, veterans, or adults who seek to continue their education or launch their career.	N/A	
3.1.3	By June 30, 2023, develop and codify the process for hiring and deployment of full-time staff.	0%	100%	100%	Percent complete	Complete	State Fiscal Year	0	Internal records.	Office of the President, Office of Finance and Administration	Access and support from a South Carolina regional comprehensive university to obtain an undergraduate or graduate degree.	General Public: Students who are high school graduates, veterans, or adults who seek to continue their education or launch their career.	N/A	
3.1.4	By June 30, 2023, develop and codify the process for hiring and deployment of part-time staff.	0%	100%	100%	Percent complete	Complete	State Fiscal Year	0	Internal records.	Office of the President, Office of Finance and Administration	Access and support from a South Carolina regional comprehensive university to obtain an undergraduate or graduate degree.	General Public: Students who are high school graduates, veterans, or adults who seek to continue their education or launch their career.	N/A	
<b>4.1</b>	<b>Redesign student success</b>													<b>State Objective: Education, Training, and Human Development</b>
4.1.1	By Fall 2022, hire a Vice President for Student Experience and Quality Assurance.	0%	100%	100%	Percent complete	Complete	State Fiscal Year	0	Internal records.	Office of the President	Access and support from a South Carolina regional comprehensive university to obtain an undergraduate or graduate degree.	General Public: Students who are high school graduates, veterans, or adults who seek to continue their education or launch their career.	N/A	
4.1.2	By June 30, 2023, restructure and reorganize administrative units that support students.	0%	100%	100%	Percent complete	Complete	State Fiscal Year	0	Internal records.	Office of the President	Access and support from a South Carolina regional comprehensive university to obtain an undergraduate or graduate degree.	General Public: Students who are high school graduates, veterans, or adults who seek to continue their education or launch their career.	N/A	
4.1.3	Increase the Fall 2022 first-time freshman retention by 2% as of Fall 2023.	66.30%	68.30%	100%	Percent	Equal to or greater than	State Fiscal Year	0	Internal records.	Office of Institutional Research	Access and support from a South Carolina regional comprehensive university to obtain an undergraduate or graduate degree.	General Public: Students who are high school graduates, veterans, or adults who seek to continue their education or launch their career.	N/A	
<b>5.1</b>	<b>Redesign advancement operations</b>													<b>State Objective: Education, Training, and Human Development</b>
5.1.1	By June 30, 2023, hire a new Vice President for University Advancement.	0%	100%	100%	Percent complete	Complete	State Fiscal Year	0	Internal records.	Office of the President	Access and support from a South Carolina regional comprehensive university to obtain an undergraduate or graduate degree.	General Public: Students who are high school graduates, veterans, or adults who seek to continue their education or launch their career.	N/A	
5.1.2	By June 30, 2023, optimize and reorganize the Office of University Advancement's reporting structure.	0%	100%	80%	Percent complete	Complete	State Fiscal Year	0	Internal records.	Office of the President	Access and support from a South Carolina regional comprehensive university to obtain an undergraduate or graduate degree.	General Public: Students who are high school graduates, veterans, or adults who seek to continue their education or launch their career.	N/A	Partially complete. Newly hired Vice President for University Advancement (VPUA) to complete the optimization and reorganization of VPUA reporting structure.
<b>6.1</b>	<b>Increase the number of new academic programs</b>													<b>State Objective: Education, Training, and Human Development</b>
6.1.1	By June 30, 2023, develop and approve at least 4 new high-demand, market-driven programs.	0%	100%	100%	Percent complete	Complete	State Fiscal Year	0	Internal records.	Office of Academic Affairs	Access and support from a South Carolina regional comprehensive university to obtain an undergraduate or graduate degree.	General Public: Students who are high school graduates, veterans, or adults who seek to continue their education or launch their career.	N/A	
<b>7.1</b>	<b>Increase the number of available parking spaces for students</b>													<b>State Objective: Education, Training, and Human Development</b>
7.1.1	By start of classes in Fall 2022, increase the number of available parking spaces by 150.	0%	100%	100%	Percent complete	Complete	State Fiscal Year	0	Internal records.	Office of Finance and Administration	Access and support from a South Carolina regional comprehensive university to obtain an undergraduate or graduate degree.	General Public: Students who are high school graduates, veterans, or adults who seek to continue their education or launch their career.	N/A	

# FY2024

## Strategic Plan Development

as submitted for the Accountability Report by:

H210 - Lander University

Goal 1 A governing board engaged in the review of the university's mission, vision, and university-level policies

Goal 2 A university engaged in service with State and local community partners

Goal 3 Student success

Goal 4 Optimized campus infrastructure and grounds

Perf. Measure Number	Description	Base	Target	Value Type	Desired Outcome	Time Applicable	Calculation Method	Data Source	Data Location	Stakeholder Need Satisfied	Primary Stakeholder	State Funded Program Number Responsible	Notes
<b>1.1 Develop action plans necessary to accomplish strategic plan objectives</b>													
<b>State Objective: Education, Training, and Human Development</b>													
1.1.1	By June 30, 2024, develop action plans to accomplish objectives laid out in the 2023 Strategic Plan	0%	100%	Percent complete	Complete	State Fiscal Year	0	Internal Records	Office of the President	Access and support from a South Carolina regional comprehensive university to obtain an undergraduate or graduate degree.	General Public: Students who are high school graduates, veterans, or adults who seek to continue their education or launch their career.	N/A	
<b>2.1 Develop university work groups to support the mission and vision of the South Carolina Institute for the Prevention of Sexual Violence on College Campuses (SCIPSVCC)</b>													
<b>State Objective: Education, Training, and Human Development</b>													
2.1.1	By June 30, 2024, develop workgroups (e.g., Chiefs of police, Title IX Officers, etc.) to support the mission and vision the SCIPSVCC.	0%	100%	Percent complete	Complete	State Fiscal Year	0	Internal Records	Office of the President	Access and support from a South Carolina regional comprehensive university to obtain an undergraduate or graduate degree.	General Public: Students who are high school graduates, veterans, or adults who seek to continue their education or launch their career.	N/A	
<b>3.1 Develop, expand, and maintain a comprehensive program to ensure the success and forward progress of all Lander University students inside and outside the classroom</b>													
<b>State Objective: Education, Training, and Human Development</b>													
3.1.1	By June 30, 2024, Lander University will develop, implement, and assess a successful university-wide academic recovery program for first-year students. The program will create an academic coaching department, interventions, and resources to support students to proactively increase student success.	0%	100%	Percent complete	Complete	State Fiscal Year	0	Internal Records	Office of the President	Access and support from a South Carolina regional comprehensive university to obtain an undergraduate or graduate degree.	General Public: Students who are high school graduates, veterans, or adults who seek to continue their education or launch their career.	N/A	
<b>4.1 Expand and maintain the university's facilities and infrastructure to achieve and sustain the institutional mission</b>													
<b>State Objective: Education, Training, and Human Development</b>													
4.1.1	By June 30, 2024, repair and replace major utilities of the Graduate School and Administrative Office building.	0%	100%	Percent complete	Complete	State Fiscal Year	0	Internal Records	Office of the President	Access and support from a South Carolina regional comprehensive university to obtain an undergraduate or graduate degree.	General Public: Students who are high school graduates, veterans, or adults who seek to continue their education or launch their career.	N/A	



# 2023

## Budget Data

as submitted for the Accountability Report by:

H210 - Lander University

State Funded Program No.	State Funded Program Title	Description of State Funded Program	(Actual) General	(Actual) Other	(Actual) Federal	(Actual) Total	(Projected) General2	(Projected) Other	(Projected) Federal4	(Projected) Total
4500.010000.000	Education & General	Supports the financial stability of the university by funding all instruction, academic support, student services, athletics, institutional support, and operation and maintenance of plant.	\$ 12,743,431.00	\$ 51,764,982.00	\$ 8,190,525.00	\$ 72,698,938.00	\$ 16,911,803.00	\$ 48,238,320.00	\$ 7,736,295.00	\$ 72,886,418.00
6000.000000.000	Auxiliary Enterprises	These functions charge for their services and are 100% self-supporting. They include Housing, Bookstore, and Dining Services.	\$ -	\$ 13,832,882.00	\$ -	\$ 13,832,882.00	\$ -	\$ 14,554,849.00	\$ -	\$ 14,554,849.00
9500.050000.000	State Employer Contributions	Employee benefits are the employer's share of related FICA, retirement, unemployment insurance, workers compensation, health and dental insurance for all employees.	\$ 2,963,177.00	\$ 10,478,352.00	\$ 65,049.00	\$ 13,506,578.00	\$ 2,945,601.00	\$ 12,030,059.00	\$ 72,202.00	\$ 15,047,862.00

# 2023

## Legal Data

as submitted for the Accountability Report by:

H210 - Lander University

Law number	Jurisdiction	Type	Description	Purpose the law serves:	Notes:	Changes made during FY2023
Title 59, Chapter 101, Section 10	State	Statute	Lander University is designated as a public, higher education institution in South Carolina	Not related to agency deliverable		No Change
Title 59, Chapter 103, Section 35	State	Statute	Lander University answers to the South Carolina General Assembly through the South Carolina Commission on Higher Education (CHE), which possesses regulatory control over South Carolina public colleges and universities such that "No new program may be undertaken by any public institution of higher education without approval of the Commission."	Requires a service	Degrees.	No Change
Title 59, Chapter 135, Section 30(9)	State	Statute	The Lander Board of Trustees is constituted a body corporate and politic and is authorized to "confer degrees upon students and other persons as the board considers qualified"	Requires a service	Degrees.	No Change
Title 59, Chapter 101, Section 10	State	Statute	Lander University is designated as a public, higher education institution in South Carolina	Not related to agency deliverable.		No Change
Title 59, Chapter 103, Section 35	State	Statute	Lander University answers to the South Carolina General Assembly through the South Carolina Commission on Higher Education (CHE), which possesses regulatory control over South Carolina public colleges and universities such that "No new program may be undertaken by any public institution of higher education without approval of the Commission."	Requires a service	Degrees.	No Change
Title 59, Chapter 135, Section 30(9)	State	Statute	The Lander Board of Trustees is constituted a body corporate and politic and is authorized to "confer degrees upon students and other persons as the board considers qualified"	Requires a service	Degrees.	No Change

2023

Services Data

as submitted for the Accountability Report by:

H210 - Lander University

Description of Service	Description of Direct Customer	Customer Name	Others Impacted by Service	Division or major organizational unit providing the service.	Description of division or major organizational unit providing the service.	Primary negative impact if service not provided.	Changes made to services during FY2023	Summary of changes to services
With more than 60 areas of study, Lander offers incoming students degree opportunities to meet career and personal goals.	Public; High school graduates, veterans, adults looking for a second career.	General Public	Public; High school graduates, veterans, adults looking for a second career.	Lander University	Lander University is a community where learning, energy and creativity flourish. Established over 146 years ago, Lander's tradition of academic excellence is exemplified in its liberal arts and science programs, as well as professional programs in business, education, and nursing.	Loss of opportunity for South Carolina citizens in the region to advance their education, launch their careers, and continue to develop professionally within the state.	No Change	

# 2023

## Partnerships Data

as submitted for the Accountability Report by:

**H210 - Lander University**

Type of Partner Entity	Name of Partner Entity	Description of Partnership	Change to the partnership during the past fiscal year
Individual	Alumni	Provides financial support, institutional support, and student internship opportunities.	No Change
Higher Education Institute	Clemson University	Chemistry-Engineering Dual Degree Partner.	No Change
Higher Education Institute	Clemson University	Mathematics/CIS-Engineering Dual Degree Partner.	No Change
Local Government	Community and Elected Officials	Provides legislative support and opportunities for internships and service learning.	No Change
Individual	Donors	Provides scholarship and institutional support to the university.	No Change
K-12 Education Institute	Education clinical space partners	Provides Lander University teacher education students with clinical learning space and experience.	No Change
Private Business Organization	Employers	Lander University provides workforce development education opportunities, through signed agreements, to major industry employers in the state. Employers provide careers for graduates and shares labor market information that helps to shape high-demand, market-driven academic programs at the university.	No Change
Non-Governmental Organization	Healthcare clinical space partners	Provides Lander University nursing students with clinical learning space and experience.	No Change
K-12 Education Institute	High Schools	Provides Lander college-ready high school students for dual-enrollment course offerings.	No Change
Non-Governmental Organization	Lander University Board of Trustees	Provides oversight of university operations, policies, long-range planning and public accountability	No Change
State Government	South Carolina Legislature	Provides state appropriations to fund educational initiatives	No Change
Higher Education Institute	South Carolina Technical Schools	Various articulation agreements and MOUs for transfer students.	No Change

# 2023

## Reports Data

as submitted for the Accountability Report by:

H210 - Lander University

Report Name	Law Number (if applicable)	Summary of information requested in the report	Date of most recent submission DURING the past fiscal year	Reporting Frequency	Type of entity/entities	Method to access the report	Direct access hyperlink or agency contact (if not provided to ISA for posting online)	Changes to this report during the past fiscal year	Explanation why a report wasn't submitted
Annual Report of Abatements	Section 59-112-70(A-C) and Section 59-101-620	By November first of each year, state supported institutions of higher learning must submit to the Commission on Higher Education the total number of out-of-state undergraduate students during the prior fiscal year that received abatement of rates pursuant to Section 59-112-70 of the 1976 Code as well as the total dollar amount of the abatements received.	October-22	Annually	South Carolina state agency or agencies	Available on agency's website	Director of Institutional Research, Mac Kirkpatrick, mkirkpatrick@lander.edu	No Change	
Faculty Report		Report demographic data on full and part-time faculty including salary, tenure status, contract length, etc.	November-22	Annually	South Carolina state agency or agencies	Hard copy available upon request	Director of Institutional Research, Mac Kirkpatrick, mkirkpatrick@lander.edu	No Change	
Fall Semester Course Report		Report course data by semester including subject taught, credit hours per course, starting and ending time and date, method of instruction, etc.	October-22	Annually	South Carolina state agency or agencies	Hard copy available upon request	Director of Institutional Research, Mac Kirkpatrick, mkirkpatrick@lander.edu	No Change	
Fall Semester Enrollment Report		Report enrollment by semester including demographic information such as gender, ethnicity, residency, gpa, high school data, etc.	October-22	Annually	South Carolina state agency or agencies	Hard copy available upon request	Director of Institutional Research, Mac Kirkpatrick, mkirkpatrick@lander.edu	No Change	
Fall Semester Scholarship Report		Report students by semester receiving state and federal grants and scholarships including PELL, SC LIFE, SC HOPE, demographic data, etc.	October-22	Annually	South Carolina state agency or agencies	Hard copy available upon request	Director of Institutional Research, Mac Kirkpatrick, mkirkpatrick@lander.edu	No Change	
IPEDS 12 - Month Enrollment Survey		The 12-Month Enrollment component collects unduplicated student enrollment counts and instructional activity data for an entire 12-month period.	October-22	Annually	Entity within federal government	Hard copy available upon request	Director of Institutional Research, Mac Kirkpatrick, mkirkpatrick@lander.edu	No Change	
IPEDS Academic Libraries Survey		The purpose of the Academic Libraries survey is to collect information on library collections, library expenses, and library services for libraries in degree-granting postsecondary institutions.	March-23	Annually	Entity within federal government	Hard copy available upon request	Director of Institutional Research, Mac Kirkpatrick, mkirkpatrick@lander.edu	No Change	
IPEDS Admissions Survey		The primary purpose of admissions survey is to collect basic information about the undergraduate selection process for entering first-time, degree/certificate-seeking students. This includes information about admissions considerations, admissions yields, and SAT and ACT test scores (if test scores are required for admission).	January-23	Annually	Entity within federal government	Hard copy available upon request	Director of Institutional Research, Mac Kirkpatrick, mkirkpatrick@lander.edu	No Change	
IPEDS Completions Survey		This survey collects the number of degrees and certificates awarded by field of study, level of award, race/ethnicity, and gender. The reporting period for the Completions component is during the 12-month time period beginning July 1 of the previous calendar year and ending June 30 of the current calendar year.	October-22	Annually	Entity within federal government	Hard copy available upon request	Director of Institutional Research, Mac Kirkpatrick, mkirkpatrick@lander.edu	No Change	
IPEDS Enrollment Survey		The Fall Enrollment component collects student enrollment counts by level of student, enrollment status, gender and race/ethnicity. In addition, first-time student retention rates and the student-to-faculty ratio are collected.	March-23	Annually	Entity within federal government	Hard copy available upon request	Director of Institutional Research, Mac Kirkpatrick, mkirkpatrick@lander.edu	No Change	
IPEDS Finance Survey		The purpose of the IPEDS Finance component is to collect basic financial information from items associated with the institution's General Purpose Financial Statements using GASB (Governmental Accounting Standards Board) standards.	March-23	Annually	Entity within federal government	Hard copy available upon request	Director of Institutional Research, Mac Kirkpatrick, mkirkpatrick@lander.edu	No Change	

Report Name	Law Number (if applicable)	Summary of information requested in the report	Date of most recent submission DURING the past fiscal year	Reporting Frequency	Type of entity/entities	Method to access the report	Direct access hyperlink or agency contact (if not provided to ISA for posting online)	Changes to this report during the past fiscal year	Explanation why a report wasn't submitted
IPEDS Financial Aid Survey		The purpose of the Student Financial Aid survey is to collect information about financial aid provided to various groups of undergraduate students and military/veteran educational benefits for all students at the institution.	February-23	Annually	Entity within federal government	Hard copy available upon request	Director of Institutional Research, Mac Kirkpatrick, mkirkpatrick@lander.edu	No Change	
IPEDS Graduation Rate 200% Survey		The Graduation Rate 200 component is a further extension of the traditional Graduation Rates (GR) component which carries forward 100% and 150% graduation rates data previously reported in the GR component and requests information on any additional completers and exclusions from the cohort between 151% and 200% of normal time for students to complete all requirements of their program of study.	January-23	Annually	Entity within federal government	Hard copy available upon request	Director of Institutional Research, Mac Kirkpatrick, mkirkpatrick@lander.edu	No Change	
IPEDS Graduation Rate Survey		The Graduation Rate component collects data on the cohort of full-time, first-time degree/certificate-seeking undergraduate students and tracks their completion status at 150% of the normal time to complete all requirements of their program of study.	January-23	Annually	Entity within federal government	Hard copy available upon request	Director of Institutional Research, Mac Kirkpatrick, mkirkpatrick@lander.edu	No Change	
IPEDS Human Resources Survey		The HR component collects important information about the staff of the institution including faculty (instructional staff) and non-instructional staff by occupational category.	March-23	Annually	Entity within federal government	Hard copy available upon request	Director of Institutional Research, Mac Kirkpatrick, mkirkpatrick@lander.edu	No Change	
IPEDS Institutional Characteristics Survey		Report data on institution including student services, veterans services, tuition and fees, price of attendance, etc.	September-23	Annually	Entity within federal government	Hard copy available upon request	Director of Institutional Research, Mac Kirkpatrick, mkirkpatrick@lander.edu	No Change	
IPEDS Outcome Measures Survey		The Outcome Measures survey collects award and enrollment data from degree-granting institutions on four undergraduate cohorts at two points in time: six-year and eight-year for four cohorts of degree-seeking undergraduates. The four cohorts are: Full-time, first-time; Part-time, first-time; Full-time, non-first-time; Part-time, non-first-time.	January-23	Annually	Entity within federal government	Hard copy available upon request	Director of Institutional Research, Mac Kirkpatrick, mkirkpatrick@lander.edu	No Change	
NC - SARA Annual Enrollment Report		Annually report to the National Council for State Authorization Reciprocity Agreements the number of students enrolled in the institution via distance education delivered outside the home state of the institution, disaggregated by state, territory, or district in which the students reside.	May-23	Annually	Other	Hard copy available upon request	Director of Institutional Research, Mac Kirkpatrick, mkirkpatrick@lander.edu	No Change	
NCAA Graduation Success Rates/Academic Success Report		Data for graduation rates, enrollment, Graduation Success Rates and Academic Success Rates is collected.	March-23	Annually	Other	Hard copy available upon request	Director of Institutional Research, Mac Kirkpatrick, mkirkpatrick@lander.edu	No Change	
Program Completers		Report the program students graduated in the last academic year including program name, program code, degree type, semester of graduation, demographic data, etc.	September-22	Annually	South Carolina state agency or agencies	Hard copy available upon request	Director of Institutional Research, Mac Kirkpatrick, mkirkpatrick@lander.edu	No Change	
Report on Admission Standards for First-Time Entering Freshmen		Collects data on first-time freshmen applicants, including SAT scores, high school rank, high school gpa, etc.		Annually	South Carolina state agency or agencies	Hard copy available upon request	Director of Institutional Research, Mac Kirkpatrick, mkirkpatrick@lander.edu	No Change	Did not receive report from SC CHE until July 2023
Southern Association of Colleges and Schools Commission on Colleges Institutional Profile Report		This report gathers: General Information, Institutional Personnel Information, Enrollment Information, and Graduation Rate data.	January-23	Annually	Other	Hard copy available upon request	Director of Institutional Research, Mac Kirkpatrick, mkirkpatrick@lander.edu	No Change	
Spring Semester Course Report		Report course data by semester including subject taught, credit hours per course, starting and ending time and date, method of instruction, etc.	March-23	Annually	South Carolina state agency or agencies	Hard copy available upon request	Director of Institutional Research, Mac Kirkpatrick, mkirkpatrick@lander.edu	No Change	
Spring Semester Enrollment Report		Report enrollment by semester including demographic information such as gender, ethnicity, residency, gpa, high school data, etc.	March-23	Annually	South Carolina state agency or agencies	Hard copy available upon request	Director of Institutional Research, Mac Kirkpatrick, mkirkpatrick@lander.edu	No Change	
Spring Semester Scholarship Report		Report students by semester receiving state and federal grants and scholarships including PELL, SC LIFE, SC HOPE, demographic data, etc.	March-23	Annually	South Carolina state agency or agencies	Hard copy available upon request	Director of Institutional Research, Mac Kirkpatrick, mkirkpatrick@lander.edu	No Change	

Report Name	Law Number (if applicable)	Summary of information requested in the report	Date of most recent submission DURING the past fiscal year	Reporting Frequency	Type of entity/entities	Method to access the report	Direct access hyperlink or agency contact (if not provided to ISA for posting online)	Changes to this report during the past fiscal year	Explanation why a report wasn't submitted
Summer Semester Course Report		Report course data by semester including subject taught, credit hours per course, starting and ending time and date, method of instruction, etc.	August-22	Annually	South Carolina state agency or agencies	Hard copy available upon request	Director of Institutional Research, Mac Kirkpatrick, mkirkpatrick@lander.edu	No Change	
Summer Semester Enrollment Report		Report enrollment by semester including demographic information such as gender, ethnicity, residency, gpa, high school data, etc.	August-22	Annually	South Carolina state agency or agencies	Hard copy available upon request	Director of Institutional Research, Mac Kirkpatrick, mkirkpatrick@lander.edu	No Change	

<b>AGENCY NAME:</b>	Lander University		
<b>AGENCY CODE:</b>	H210	<b>SECTION:</b>	018

**2023  
Accountability Report**

**SUBMISSION FORM**

I have reviewed and approved the data submitted by the agency in the following templates:

- Data Template
  - Reorganization and Compliance
  - FY2023 Strategic Plan Results
  - FY2024 Strategic Plan Development
  - Legal
  - Services
  - Partnerships
  - Report or Review
  - Budget
- Discussion Template
- Organizational Template

I have reviewed and approved the financial report summarizing the agency’s budget and actual expenditures, as entered by the agency into the South Carolina Enterprise Information System.

The information submitted is complete and accurate to the extent of my knowledge.

<b>AGENCY DIRECTOR</b> <i>(SIGN AND DATE):</i>  <i>(TYPE/PRINT NAME):</i>	<b>SIGNATURE ON FILE</b>	<b>Signature Received:</b> 9/14/2023 3:19 PM
	Richard Cosentino	

<b>BOARD/CMSN CHAIR</b> <i>(SIGN AND DATE):</i>  <i>(TYPE/PRINT NAME):</i>	<b>SIGNATURE ON FILE</b>	<b>Signature Received:</b> 9/14/2023 3:19 PM
	Don Scott	