



# **2023 Annual Accountability Report**

---

**South Carolina Governor's School for  
Science and Mathematics**

**Agency Code: H650**

---

# Table of Contents

<b>Agency’s Discussion and Analysis .....</b>	<b>1</b>
<b>Agency Organization Chart .....</b>	<b>8</b>
<b>Reorganization and Compliance .....</b>	<b>9</b>
<b>Strategic Plan Results .....</b>	<b>10</b>
<b>Strategic Plan Development .....</b>	<b>13</b>
<b>Budget Data .....</b>	<b>16</b>
<b>Legal Data .....</b>	<b>17</b>
<b>Services Data.....</b>	<b>21</b>
<b>Partnerships Data.....</b>	<b>22</b>
<b>Reports Data .....</b>	<b>23</b>
<b>Submission Form.....</b>	<b>24</b>

<b>AGENCY NAME:</b>	<b>SC Governor's School for Science and Mathematics</b>		
<b>AGENCY CODE:</b>	<b>H650</b>	<b>SECTION:</b>	<b>10</b>

**AGENCY'S DISCUSSION AND ANALYSIS**

**Mission Statement**

GSSM seeks out and advances our state's most talented and motivated students, offering a transforming education in science, mathematics, and engineering that cultivates joy in learning and builds the confidence to engage as ethical leaders with the world's most significant issues.

**Vision Statement**

We will be recognized as a national leader in K-12 science and mathematics education, known for developing students who are exceptionally well-prepared to engage in global issues as creative and ethical leaders.

***GSSM Values***

- *Development and well-being of the whole student*
- *Sense of community between students and faculty/staff*
- *Open communication*
- *Quality curriculum*
- *Supporting education statewide*

**Accountability Report Highlights:**

***GSSM is Strong and Growing Stronger – Residential Students and Graduates:***

- *100% admitted to college*
- *77% of alumni work in STEM fields*
- *77% of alumni work in their field of study*
- *70% of alumni pursue advanced degrees*
- *84% of alumni major in a STEM field*
- *37% of alumni are currently in careers in SC*

***Strong – Alumni***

- *Engineers*
- *Corporate careers - examples: Google, Microsoft, General Electric, Westinghouse, Exxon*
- *Scientists*
- *Medical careers*
- *Entrepreneurs*
- *Academicians*

***GSSM Source of Strength – Faculty / Staff***

- *Credentialed and accomplished (All have Masters, 90% hold PhD's)*
- *Exemplify excellence and expect it from others*
- *Faculty and staff define their success by students' success*
- *Shared goals, clear responsibilities*
  - *Learning and mastery*
  - *Growth and maturity*
  - *College and life*

<b>AGENCY NAME:</b>	<b>SC Governor’s School for Science and Mathematics</b>		
<b>AGENCY CODE:</b>	<b>H650</b>	<b>SECTION:</b>	<b>10</b>

**Virtual Engineering: Accelerate and SVC**

- Graduated the eighth class of seniors who completed the Accelerate program.
- 4 Accelerate students participated in GSSM’s mentored summer research experiences with GSSM students.
- Added 2 new partners for 2024-2025 (Coastal Leadership Academy and Horse Creek Academy).
- Synchronous Virtual Courses (SVCs) offered during the 2023-2024 school year included honors Algebra 2. Students from Orangeburg High School for Health Professions participated in the program.
- STEM Foundations
- STEM Foundations is GSSM's Online Diploma Program. Students in STEM Foundations are GSSM students, and courses are taught by GSSM faculty.
- STEM Foundations students take courses in each of the core STEM disciplines, including dual-enrolled biology, chemistry, calculus, computer science, and physics, as well as an honors engineering class. They also take English, history, and foreign language for those who need it.
- Students in STEM Foundations participate in clubs, including chess club, math club, yearbook, and National Honor Society. These clubs are all student-initiated and run.
- Live study sessions for STEM Foundations students are held daily via Zoom, and students are able to attend office hours led by their teachers.
- The first class of STEM Foundations students graduated in May 2023 with 12 graduates.
- STEM Foundations students participate in in-person events throughout the school year to build community and foster bonds among the students.

**GSSM Foundations for the Future**

- Research & Inquiry
  - Rising seniors have access to both summer and school-year mentored research & inquiry experiences – 40% of the Residential Program Class of 2024 is scheduled to participate in multiple research & inquiry experiences. Continued strengthening and expansion of research site partners at academic institutions – e.g., Clemson University, University of South Carolina, MIT, MUSC, Furman University, Winthrop University, and Wofford College as well as businesses like Kyocera AVX, CPM Federal Credit Union, Integrated Systems, Nephron Pharmaceuticals and government agencies like the SC Department of Natural Resources and the USDA Agriculture Research Service. In the Summer of 2024, GSSM students participated in research at 38 different institutions in South Carolina, five other states, and Germany.
  - Continued diversification of fields represented in student research & inquiry opportunities which include molecular biology, biomedical research, engineering, material science, chemistry, computer science, robotics, cybersecurity, nanoscience, ecology, psychology, archaeology, sociology, economics, and more.
  - Growth of school-year research opportunities continues. Ongoing projects include hydroponics, microwave spectroscopy, computational drug discovery, restoration ecology, multimodal transport engineering, soil microbiota, quantitative social science, and computer-assisted mathematics.
  - Establishment of the GSSM Hydroponic Research Lab will enable student engagement in research projects in agriculture, plant biology, automation, data science, engineering, and

<b>AGENCY NAME:</b>	<b>SC Governor's School for Science and Mathematics</b>		
<b>AGENCY CODE:</b>	<b>H650</b>	<b>SECTION:</b>	<b>10</b>

more – as well as enhanced lab experience opportunities for existing classes and outreach activities.

**Academic Highlights:**

1. Course offerings
  - 145 courses offered as semester or year-long courses.
  - 78 are STEM courses.
  - 21 are College Board-approved AP courses.
  - 22 are courses for which an AP course is a pre-requisite.
  - 40 are dual-enrolled courses.
  
2. Junior and Senior Seminar Series of one-hour-per-week courses
  - Juniors take Life and Leisure, Academic Transition, College Planning I, Public Speaking, Introduction to Research and Survival Skills.
  - Seniors take College Planning II.
  
3. Dual-enrollment course agreements with Coker University and Francis Marion University remain strong and courses are added as appropriate.
  
4. Launchpad
  - A two-week Summer residential bridge program for a select group of rising juniors admitted to GSSM has continued to provide targeted instruction in Math and English as well as a variety of other subjects.
  - This program helps students be better prepared to handle the rigors of the academic program at GSSM, especially in Math, English, and Science labs.
  - This program also includes a transitional piece to help students adjust to living and learning in a residential setting.
  
5. Accelerate Engineering
  - Accelerate is a statewide virtual dual enrollment Engineering program for 10th, 11th & 12<sup>th</sup> Graders. Participants have the opportunity to earn up to 53 hours of college science, English, mathematics, and engineering credits through Coker University. This program was designed to prepare the next generation of leaders in the field of engineering and has 100 students enrolled.
  - The 8th Annual Completion Celebration was held in May for 20 students completing Accelerate. These students represented 12 schools across the state. Eighty-seven percent of the Class of 2023 will attend 2 different SC colleges.
  - Accelerate state school district partnerships, including 12 SC districts representing 44 schools and the 7 SC Congressional Districts. Two new partner schools will be added for the 2024-2025 school year (Coastal Leadership Academy and Horse Creek Academy).
  - Access to GSSM summer research programs for rising seniors continued for all Accelerate. Four students conducted research with GSSM students at the University of South Carolina, Clemson University, and virtually with MIT. Accelerate students may

<b>AGENCY NAME:</b>	<b>SC Governor’s School for Science and Mathematics</b>		
<b>AGENCY CODE:</b>	<b>H650</b>	<b>SECTION:</b>	<b>10</b>

continue their summer research projects through their Accelerate senior engineering design process class in the fall semester.

**Outreach Center Overview**

The GSSM Center for Science Education & Outreach is a leader in the development and delivery of exemplary programs that are designed to improve and support the STEM achievement of students and the professional growth of teachers across South Carolina. The Outreach Center is a statewide resource of STEM learning opportunities and experiences for SC students and teachers.

Each year the Outreach Center delivers learning opportunities reflecting the following goals: 1) developing students’ understanding of the relationship between science, technology, engineering, mathematics, and society; 2) improving the problem-solving and reasoning skills of students; 3) providing opportunities for students and teachers to explore real-world applications of science, technology, engineering, and mathematics; 4) improving content knowledge and pedagogical content knowledge of science and mathematics teachers; 5) encouraging students to explore careers and post-secondary majors in the areas of science, technology, engineering, and mathematics; and 6) encouraging students to consider GSSM as a STEM educational option.

GSSM Outreach is a source for increasing GSSM student involvement in the development and delivery of programs and expanding the Outreach Center’s STEM education impact on students and teachers across the state for the foreseeable future. Each year over one hundred GSSM students are involved in the programs and collaborating with the Center for Outreach. The Center’s endeavors are developed and delivered with the support of the State, SC businesses, and private foundations.

The combined total statewide impact of students, teachers, and parents served by the Outreach Center through a variety of learning opportunities and experiences delivered either virtually or in person during the school year and summer was over 8,000.

**2022-2023 Academic Year (AY) Outreach Center Impact**

The Outreach Center increased its in-person on-campus and off-campus learning experiences and the variety of its virtual after-school program. Some of the experiences provided included SPARK, ENGAGE, STEM Days @ GSSM, and science lessons to elementary schools across the state. Over 7,000 students, teachers, & parents participated in the learning opportunities during the academic year. The annual INSIDE GSSM day where families across the state experience GSSM while participating in interactive activities led by our faculty, staff, and students was offered for another year.

**2023 Summer Outreach Center Impact**

The Outreach Center offered five technology-based iTEAMS day camps delivered in partner schools, four CREATEng engineering day camps, three weeks of the GoSciTech residential STEM camp, and two weeks of Summer STEM, which is a virtual two-way interactive project-

based camp. A total of 952 students participated in the summer programs. These students represented 38 of the state's 46 counties.

Below are several quotes from students who participated in 2023 Outreach Center summer programs and their parents. These comments demonstrate the impact the summer programs are having on young SC students.

### **Students:**

"The most memorable thing that I learned this week was that it is possible to be able to code real-world physics into python."

"The most memorable thing I learned was how true engineers think when approaching a problem. it was interesting to learn how the engineering process worked, and it was very fun."

"This camp dives deeply into engineering and has a lot of hands-on projects that are really fun. You get to learn about engineering in homes, plumbing, electricity, etc., which can boost your understanding of the engineering topic. This camp was really fun!"

"This summer camp is a very exciting and mind-blowing camp because it lets you make games that you thought were impossible."

"If you have ever wanted to have the skills of being able to create your own game, you should try to apply for the Governor's School program! The game design course is very interactive and flexible and gives you the opportunity to explore the world of coding from a fun viewpoint."

"Content-wise, I learned the basics of coding in HTML and CSS. I realize that code is not as complicated as I previously thought. In general, I learned to gain confidence in my capabilities. I came into this class without any coding experience, but I came out with a deeper understanding of it."

### **Parents:**

"My child was captivated by the fact that she was able to learn how to create a computer game from scratch and available opportunities from having this knowledge."

"My child was excited each day, and she is already showing interest in university based on advice given to her."

"My child loved that she got to create her own game by learning how to program. She thinks bringing in the TRANE Technology company was really helpful for them to understand how to apply what they learned to real-world careers."

"Another excellent experience with GSSM! My son looks forward to this camp each year, and we, as his family, look forward to hearing about all he learned at camp."

"The CREATEng program was interesting and provided a challenge, but that proved to be encouraging, and my child would NOT stop until he got it to work."

"Thank you for offering a summer program with such a high level of critical thinking and collaboration."

<b>AGENCY NAME:</b>	<b>SC Governor’s School for Science and Mathematics</b>		
<b>AGENCY CODE:</b>	<b>H650</b>	<b>SECTION:</b>	<b>10</b>

**Student Research Programs: SPRI & RESP:**

GSSM provided summer mentored research & inquiry opportunities (Summer Program for Research Interns; SPRI) to all students either required or choosing to participate. GSSM Research & Inquiry has continued to innovate to provide significant opportunities to students, diversify experiences, expand school-year research opportunities, extend the network of research partners, include Accelerate & STEM Foundations program students, and increase the sustainability of GSSM’s research & inquiry programming.

- 110 Residential, 4 Accelerate & 1 STEM Foundations students participated in summer mentored research & inquiry experiences. mentored research & inquiry experiences at 38 institutions in 6 states and 2 countries with 83 research mentors.
  - 94% report increased understanding of the research process.
  - 99% report increased understanding of their field of research.
  - Among a population already highly inclined toward STEM careers, 65% report an increased likelihood that they would pursue a STEM career (99% reported no change or an increase).
- 44% of Residential Class of 2024 students are scheduled to participate in one or more on-campus, school year research opportunities.

40% of the Class of 2024 is currently expected to have completed more than 1 research & inquiry experience while at GSSM.

The GSSM Research Experience Scholars Program (RESP) is an international component of the summer mentored research & inquiry program and is discussed below under “Student Global Learning Opportunities & Experiences.

**Student Global Learning Opportunities & Experiences:**

The GSSM Research Experience Scholars Program (RESP) is an international component of the summer mentored research & inquiry program. In the Summer of 2023, three GSSM Residential program students participated in research at the German Cancer Research Center (Heidelberg, Germany) in partnership with the Johanna Wittum Schule (Pforzheim, Germany). Three visiting students from Johanna Wittum Schule are conducting research in molecular genetics and nutrition at the Clemson University Pee Dee Research & Education Center. Six GSSM Residential program students participated in research at the Fraunhofer Institute of Experimental Software Engineering (Kaiserslautern, Germany), the Fraunhofer Institute of Industrial Mathematics (Kaiserslautern, Germany), and the German Research Center for Artificial Intelligence in partnership with the Gymnasium am Rittersberg (Kaiserslautern, Germany). Six visiting students from Gymnasium am Rittersberg located in Kaiserslautern will visit GSSM later in the fall semester.



<b>AGENCY NAME:</b>	<b>SC Governor's School for Science and Mathematics</b>		
<b>AGENCY CODE:</b>	<b>H650</b>	<b>SECTION:</b>	<b>10</b>

**Student Development:**

**Athletics**

- During the 2022-23 school year, approximately 67% of GSSM students participated in interscholastic athletics including basketball, cross country, golf, swimming, soccer, track, and volleyball.
- For the 2022 Academic Year, GSSM earned five regional championships: Volleyball, Men's Cross Country, Women's Cross Country, Women's Track, and Men's Golf.
- A chapter of the Fellowship of Christian Athletes was started and met regularly.

**Campus Life**

- During the 22-23 school year, over 60 clubs, organizations, and societies were registered with the Office of the Dean of Students service organizations, academic teams, special interest groups, and clubs representing various disciplines.
- Our student clubs and organizations, along with the SAC Coordinator, the Residence Life Coordinators, and Resident Assistants sponsored a full complement of diverse programs and activities for students, including festivals, cultural celebrations, and awareness/service initiatives.
- Efforts to assist students in developing skills focused on global citizenship and inclusion continue.
- Workshops were held to assist students and the advisors of clubs and organizations in effectively carrying out their duties.

**Risk Assessment and Mitigation Strategies:**

- GSSM provides uniquely advanced education opportunities in multiple settings to highly capable students around the state. Our goals and objectives should enhance quality, availability, and access statewide. Failure to meet these goals would mean that the school is not providing top-tier education, that its programs are not available in areas where students who need them, or that where they are available, they are not equally accessible to all students.
- Thanks to historically strong support from the state legislature, private partnerships, and an active community of parents and alumni, the school is well-positioned to achieve its goals with excellence. Continued support of our programs, especially the growth of our Outreach initiatives, is key to our ability to identify and nurture talented students to lead the state's knowledge economy.

AGENCY NAME:

South Carolina Governor's School for Science and Mathematics

AGENCY CODE:

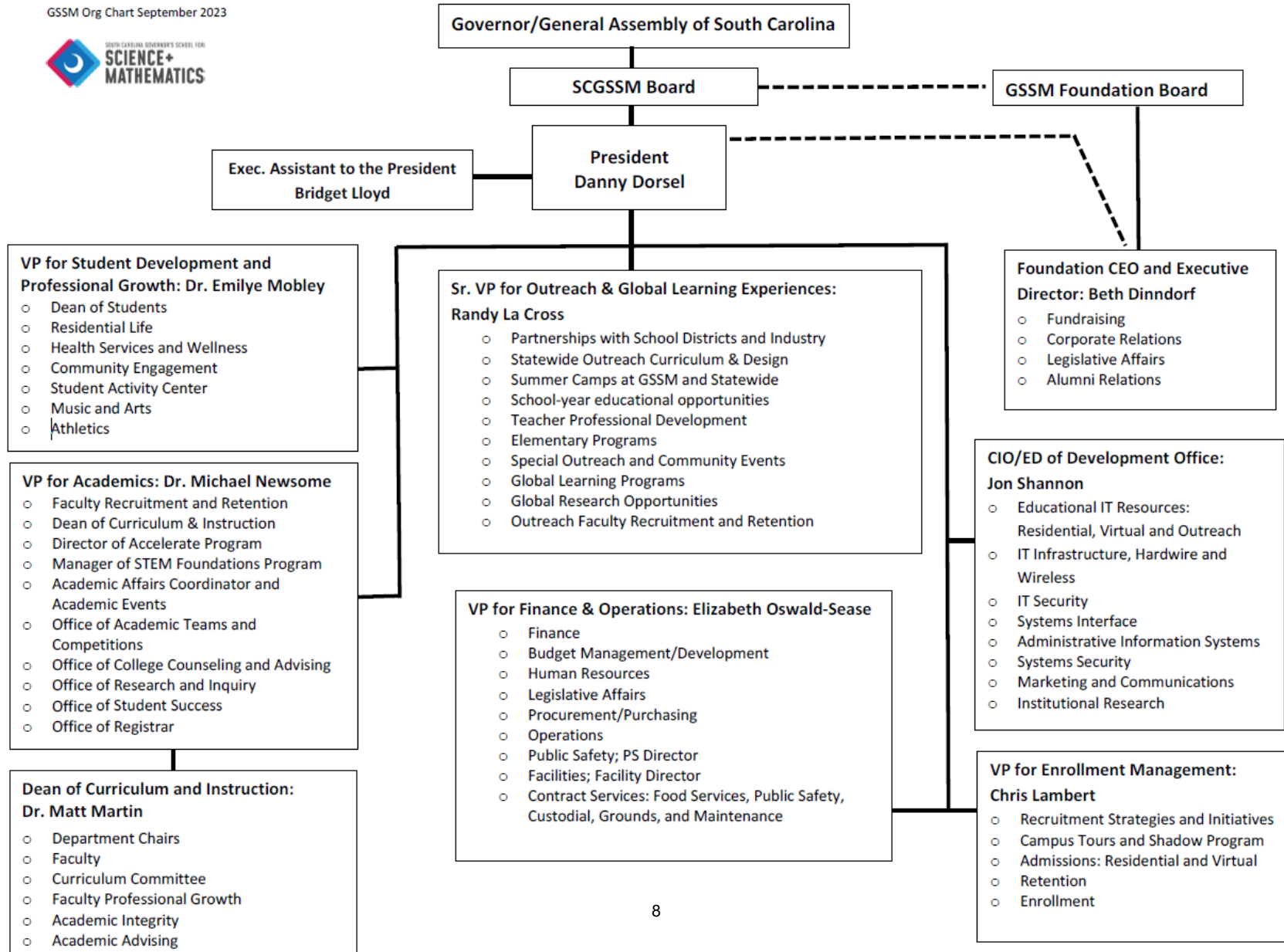
H650

SECTION:

10

# AGENCY ORGANIZATIONAL CHART

GSSM Org Chart September 2023



# 2023

## Reorganization and Compliance

as submitted for the Accountability Report by:

### H650 - Governor's School for Science and Math

#### Primary Contact

First Name	Last Name	Role/Title	Email Address	Phone
Elizabeth	Oswald-Sease	Vice President of Finance and Operations/CFO	eoswaldsease@governors.school	803-402-7556

#### Secondary Contact

First Name	Last Name	Role/Title	Email Address	Phone
Thomasina	Wilson	Senior Accountant/Fiscal Analyst	wilson@governors.school	843-383-3946

#### Agency Mission

**Adopted in:**

**2018**

GSSM seeks out and advances our state's most talented and motivated students, offering a transforming education in science, mathematics, and engineering that cultivates joy in learning and builds the confidence to engage as ethical leaders with the world's most significant issues.

#### Agency Vision

**Adopted in:**

**2018**

We will be recognized as a national leader in K-12 science and mathematics education, known for developing students who are exceptionally well-prepared to engage in global issues as creative and ethical leaders.

#### Recommendations for reorganization requiring legislative change:

None

#### Agency intentions for other major reorganization to divisions, departments, or programs to allow the agency to operate more effectively and efficiently in the succeeding fiscal year:

None

#### Significant events related to the agency that occurred in FY2023

Description of Event	Start	End	Agency Measures Impacted	Other Impacts
No significant events affected performance measures.				

**Is the agency in compliance with S.C. Code Ann. § 2-1-220, which requires submission of certain reports to the Legislative Services Agency for publication online and the State Library? (See also S.C. Code Ann. § 60-2-20).**

Yes

Reason agency is out of compliance: (if applicable)

**Is the agency in compliance with various requirements to transfer its records, including electronic ones, to the Department of Archives and History? See the Public Records Act (S.C. Code Ann. § 20-1-10 through 20-1-180) and the South Carolina Uniform Electronic Transactions Act (S.C. Code Ann. § 26-6-10 through 26-10-210).**

Yes

**Does the law allow the agency to promulgate regulations?**

No

Law number(s) which gives the agency the authority to promulgate regulations:

**Has the agency promulgated any regulations?**

No

**Is the agency in compliance with S.C. Code Ann. § 1-23-120 (J), which requires an agency to conduct a formal review of its regulations every five years?**

Yes

(End of Reorganization and Compliance Section)

# FY2023

## Strategic Plan Results

as submitted for the Accountability Report by:

### H650 - Governor's School for Science and Math

**Goal 1** Provide the best advanced education for S.C.'s most selective students

**Goal 2** Provide the best advanced education for S.C.'s most selective students

**Goal 3** Lead in the development and delivery of statewide academic opportunities that support and improve achievement via GSSM Research and Outreach Center programs and initiatives

Perf. Measure Number	Description	Base	Target	Actual	Value Type	Desired Outcome	Time Applicable	Calculation Method	Data Source	Data Location	Stakeholder Need Satisfied	Primary Stakeholder	State Funded Program Number Responsible	Notes
<b>1.1 Provide the best credentialed and most experienced teachers in all subjects</b>														
<b>State Objective: Education, Training, and Human Development</b>														
1.1.1	Hire teachers with minimum Master's degrees, PhD's preferred in their areas - appropriate to full-capacity growth of student body.	100%	100%	100%	Percent	Equal to or greater than	State Fiscal Year	% of Masters/PhD/Faculty	School Records	Human Resources	A well-educated faculty experienced in higher education.	GSSM Students	5001.000000.000	
1.1.2	Maintain low student to teacher ratio, reported as average number of students per teacher.	9-1	9-1	9-1	Ratio	Equal to or greater than	State Fiscal Year	Students/Teachers	School Records	Human Resources	College level courses taught to high school students.	GSSM Students	5001.000000.000	
1.1.3	100% of GSSM grads admitted undergraduate school	100%	100%	100%	Percent	Equal to or greater than	Calendar Year	Number of students admitted to undergraduate school	School Records	College Counseling	Ensure that GSSM students will receive the opportunity for a postsecondary education.	GSSM Students	5001.000000.000	
<b>1.2 Continually advance curriculum offerings in the residential, virtual and outreach programs</b>														
<b>State Objective: Education, Training, and Human Development</b>														
1.2.1	Identify and attract larger pools of talented students to reach through outreach programs	2,800	2,925	3,000	Count	Equal to or greater than	Other	Number of virtual/outreach students	School Records	GSSM Outreach	Accessibility to GSSM educational programs.	South Carolina Students	5001.000000.000	
1.2.2	Continue to maintain or increase engineering offerings at GSSM.	18	18	18	Count	Equal to or greater than	Other	Number of engineering courses at GSSM.	School Records	GSSM Academics	To prepare GSSM students for college engineering programs and engineering careers.	GSSM Students	5001.000000.000	
1.2.3	Identify and attract larger pools of talented students to reach through virtual programs	142	135	100	Count	Equal to or greater than	Other	Number of Accelerate and STEM Scholar students.	School Records	GSSM Accelerate	Provide STEM education to students in their home districts throughout the state.	South Carolina Students	5001.000000.000	
1.2.4	Deliver foundational math and other STEM courses in a synchronous virtual format to students around the state	151	160	77	Count	Equal to or greater than	Other	Number of SVC students (fall + spring)	School Records	GSSM Synchronous Virtual Courses (SVC)	Provide STEM education to students in their home districts throughout the state.	GSSM Virtual Students	5001.000000.000	We are reevaluating our virtual program offerings, which resulted in less students this year.
<b>1.3 Provide a safe and supportive teaching environment with technology</b>														
<b>State Objective: Education, Training, and Human Development</b>														
1.3.1	Schedule facility repair in teaching spaces to allow for zero teaching downtime for instruction	0%	0%	0%	Percent	Equal to or less than	State Fiscal Year	% of instructional time stopped due to facility issues	School Records	GSSM Operations	Avoid disruption of the educational process due to operational improvements.	GSSM Residential Students	5001.000000.000	

Perf. Measure Number	Description	Base	Target	Actual	Value Type	Desired Outcome	Time Applicable	Calculation Method	Data Source	Data Location	Stakeholder Need Satisfied	Primary Stakeholder	State Funded Program Number Responsible	Notes
1.3.2	Upgrade IT networks and in-classroom/lab IT to support instruction	92%	92%	92%	Percent	Equal to or greater than	State Fiscal Year	% of technology equipment and infrastructure within its useful life	School Records	GSSM IT	Provide students with high level technology to meet the needs of the curriculum	GSSM Students	5001.000000.000	
<b>2.1 Conduct Extracurricular Programs appropriate to an academically-focused residential high school</b>														
<b>State Objective: Education, Training, and Human Development</b>														
2.1.1	Increase student participation on athletic teams by providing sports that support student interests and abilities	72%	75%	75%	Percent	Equal to or greater than	Other	% of residential students participating in SCHSL athletics	School Records	GSSM Residential	Provide opportunities for students to participate in athletic events on a interscholastic level.	GSSM Residential Students	5001.000000.000	
2.1.2	Increase student participation in clubs and organizations by providing opportunities that match student interests and abilities	95%	96%	96%	Percent	Equal to or greater than	Other	% of students involved in clubs and organizations	School Records	GSSM Residential	Provide opportunities for students to explore and develop other interests outside of class.	GSSM Residential Students	5001.000000.000	
<b>2.2 Create arts and music programs supporting students interests and talents</b>														
<b>State Objective: Education, Training, and Human Development</b>														
2.2.1	Maintain specialized art and music instructors to foster student development in art & music	2	2	2	Count	Equal to or greater than	Other	Number of teachers for art and music	School Records	Human Resources	Provide opportunities for students to develop other talents and meet GSSM graduation requirements.	GSSM Residential Students	5001.000000.000	
<b>2.3 Ensure physical and mental health of students</b>														
<b>State Objective: Education, Training, and Human Development</b>														
2.3.1	Provide mental health licensed professionals to support mental health of the students	2.5	2.5	2.5	Count	Equal to or greater than	State Fiscal Year	Number of mental health professionals with a PhD/MD	School Records	Health Services	Provide students with well-trained mental health professionals on campus.	GSSM Residential Students	5001.000000.000	
2.3.2	Provide extensive qualified nursing services to include medication management	14	14	14	Count	Equal to or less than	Other	Number of weekday and weekend shifts nurses are available to provide health care	School Records	Health Services	Meet the health needs of our residential students on campus.	GSSM Residential Students	5001.000000.000	
<b>3.1 Enhance GSSM's advanced research program opportunities for residential students</b>														
<b>State Objective: Education, Training, and Human Development</b>														
3.1.1	Increase diverse research opportunities at state, national and international universities and/or industrial sites	20	20	20	Count	Equal to or greater than	Other	Number of research sites	School Records	GSSM Residential	Provide opportunities for students to learn outside the classroom through real-world research experiences.	GSSM Students	5001.000000.000	
3.1.2	Provide research opportunities for virtual students	14	13	13	Count	Equal to or greater than	Other	Number of virtual students participating in research	School Records	Accelerate Program	Provide opportunities for students to learn outside the classroom through real-world research experiences.	GSSM Virtual Students	5001.000000.000	
<b>3.2 Enhance and expand high-quality statewide academic programs developed and delivered by the GSSM Outreach Center</b>														
<b>State Objective: Education, Training, and Human Development</b>														

Perf. Measure Number	Description	Base	Target	Actual	Value Type	Desired Outcome	Time Applicable	Calculation Method	Data Source	Data Location	Stakeholder Need Satisfied	Primary Stakeholder	State Funded Program Number Responsible	Notes
3.2.1	Increase programs targeted to specific age and demographic groups	60	60	60	Count	Equal to or greater than	State Fiscal Year	Number of students participating in virtual classes	School Records	Outreach	Target both younger students and students in underserved areas of the state to experience STEM education both on-campus and at their home districts.	South Carolina School Districts	5001.000000.000	
3.2.2	Increase Outreach partners, both at schools & districts, and with business partners.	102	110	59	Count	Equal to or greater than	State Fiscal Year	Number of school districts	School Records	GSSM Outreach	Provide opportunities for students to experience STEM education both on-campus and at their home districts.	South Carolina School Districts	5001.000000.000	
3.2.3	Continue to grow Accelerate Engineering Statewide program	21	22	21	Count	Equal to or greater than	Other	Number of sites participating for the Accelerate Engineering Program	School Records	GSSM Accelerate	Expand STEM opportunities for our school districts.	South Carolina School Districts	5001.000000.000	

# FY2024

## Strategic Plan Development

as submitted for the Accountability Report by:

### H650 - Governor's School for Science and Math

- Goal 1** Provide the best advanced education for S.C.'s most selective students
- Goal 2** Provide the best advanced education for S.C.'s most selective students
- Goal 3** Lead in the development and delivery of statewide academic opportunities that support and improve achievement via GSSM Research and Outreach Center programs and initiatives

Perf. Measure Number	Description	Base	Target	Value Type	Desired Outcome	Time Applicable	Calculation Method	Data Source	Data Location	Stakeholder Need Satisfied	Primary Stakeholder	State Funded Program Number Responsible	Notes
<b>1.1 Provide the best credentialed and most experienced teachers in all subjects</b>													
<b>State Objective: Education, Training, and Human Development</b>													
1.1.1	Hire teachers with minimum Master's degrees, PhD's preferred in their areas - appropriate to full-capacity growth of student body.	100%	100%	Percent	Maintain range	State Fiscal Year	% of Masters/PhD/Faculty	School Records	Human Resources	A well-educated faculty experienced in higher education.	GSSM Students	5001.000000.000	
1.1.2	Maintain low student to teacher ratio, reported as average number of students per teacher.	9-1	9-1	Ratio	Maintain range	State Fiscal Year	Students/Teachers	School Records	Human Resources	College level courses taught to high school students.	GSSM Students	5001.000000.000	
1.1.3	100% of GSSM grads admitted undergraduate school	100%	100%	Percent	Maintain range	Other	Number of students admitted to undergraduate school	School Records	College Counseling	Ensure that GSSM students will receive the opportunity for a postsecondary education.	GSSM Students	5001.000000.000	
<b>1.2 Continually advance curriculum offerings in the residential, virtual and outreach programs</b>													
<b>State Objective: Education, Training, and Human Development</b>													
1.2.1	Identify and attract larger pools of talented students to reach through outreach programs	2,800	2,925	Count	Equal to or greater than	Other	Number of virtual/outreach students	School Records	GSSM Outreach	Accessibility to GSSM educational programs.	South Carolina Students	5001.000000.000	
1.2.2	Continue to maintain or increase engineering offerings at GSSM.	18	18	Count	Equal to or greater than	Other	Number of engineering courses at GSSM.	School Records	GSSM Academics	To prepare GSSM students for college engineering programs and engineering careers.	GSSM Students	5001.000000.000	
1.2.3	Identify and attract larger pools of talented students to reach through virtual programs	142	135	Count	Equal to or greater than	Other	Number of Accelerate, TEAM UP students and STEM Scholar students.	School Records	GSSM Accelerate/TEAM UP	Provide STEM education to students in their home districts throughout the state.	South Carolina Students	5001.000000.000	
1.2.4	Deliver foundational math and other STEM courses in a synchronous virtual format to students around the state	151	160	Count	Equal to or greater than	Other	Number of SVC students (fall + spring)	School Records	GSSM Synchronous Virtual Courses (SVC)	Provide STEM education to students in their home districts throughout the state.	GSSM Virtual Students	5001.000000.000	
<b>1.3 Provide a safe and supportive teaching environment with technology</b>													
<b>State Objective: Education, Training, and Human Development</b>													
1.3.1	Schedule facility repair in teaching spaces to allow for zero teaching downtime for instruction	0%	0%	Percent	Maintain range	State Fiscal Year	% of instructional time stopped due to facility issues	School Records	GSSM Operations	Avoid disruption of the educational process due to operational improvements.	GSSM Residential Students	5001.000000.000	
1.3.2	Upgrade IT networks and in-classroom/lab IT to support instruction	92%	92%	Percent	Equal to or greater than	State Fiscal Year	% of technology equipment and infrastructure within its useful life	School Records	GSSM IT	Provide students with high level technology to meet the needs of the curriculum	GSSM Students	5001.000000.000	

Perf. Measure Number	Description	Base	Target	Value Type	Desired Outcome	Time Applicable	Calculation Method	Data Source	Data Location	Stakeholder Need Satisfied	Primary Stakeholder	State Funded Program Number Responsible	Notes	
<b>2.1 Conduct Extracurricular Programs appropriate to an academically-focused residential high school</b>													<b>State Objective: Education, Training, and Human Development</b>	
2.1.1	Increase student participation on athletic teams by providing sports that support student interests and abilities	72%	75%	Percent	Equal to or greater than	State Fiscal Year	% of residential students participating in SCHSL athletics	School Records	GSSM Residential	Provide opportunities for students to participate in athletic events on a interscholastic level.	GSSM Residential Students	5001.000000.000		
2.1.2	Increase student participation in clubs and organizations by providing opportunities that match student interests and abilities	95%	96%	Percent	Equal to or greater than	State Fiscal Year	% of students involved in clubs and organizations	School Records	GSSM Residential	Provide opportunities for students to explore and develop other interests outside of class.	GSSM Residential Students	5001.000000.000		
<b>2.2 Create arts and music programs supporting students interests and talents</b>													<b>State Objective: Education, Training, and Human Development</b>	
2.2.1	Maintain specialized art and music instructors to foster student development in art & music	2	2	Count	Equal to or greater than	State Fiscal Year	Number of teachers for art and music	School Records	Human Resources	Provide opportunities for students to develop other talents and meet GSSM graduation requirements.	GSSM Residential Students	5001.000000.000		
<b>2.3 Ensure physical and mental health of students</b>													<b>State Objective: Education, Training, and Human Development</b>	
2.3.1	Provide mental health licensed professionals to support mental health of the students	2.5	2.5	Count	Equal to or greater than	State Fiscal Year	Number of mental health professionals with a PhD/MD	School Records	Health Services	Provide students with well-trained mental health professionals on campus.	GSSM Residential Students	5001.000000.000		
2.3.2	Provide extensive qualified nursing services to include medication management	14	14	Count	Equal to or greater than	State Fiscal Year	Number of weekday and weekend shifts nurses are available to provide health care	School Records	Health Services	Meet the health needs of our residential students on campus.	GSSM Residential Students	5001.000000.000		
<b>3.1 Enhance GSSM's advanced research program opportunities for residential students</b>													<b>State Objective: Education, Training, and Human Development</b>	
3.1.1	Increase diverse research opportunities at state, national and international universities and/or industrial sites	20	20	Count	Equal to or greater than	Other	Number of research sites	School Records	GSSM Residential	Provide opportunities for students to learn outside the classroom through real-world research experiences.	GSSM Students	5001.000000.000		
3.1.2	Provide research opportunities for virtual students	14	13	Count	Equal to or greater than	Other	Number of virtual students participating in research	School Records	Accelerate Program	Provide opportunities for students to learn outside the classroom through real-world research experiences.	GSSM Virtual Students	5001.000000.000		
<b>3.2 Enhance and expand high-quality statewide academic programs developed and delivered by the GSSM Outreach Center</b>													<b>State Objective: Education, Training, and Human Development</b>	



Perf. Measure Number	Description	Base	Target	Value Type	Desired Outcome	Time Applicable	Calculation Method	Data Source	Data Location	Stakeholder Need Satisfied	Primary Stakeholder	State Funded Program Number Responsible	Notes
3.2.1	Increase programs targeted to specific age and demographic groups	60	60	Count	Equal to or greater than	Other	Number of students participating in virtual classes	School Records	Outreach	Target both younger students and students in underserved areas of the state to experience STEM education both on-campus and at their home districts.	South Carolina School Districts	5001.000000.000	
3.2.2	Increase Outreach partners, both at schools & districts, and with business partners.	102	110	Count	Equal to or greater than	Other	Number of school districts	School Records	GSSM Outreach	Provide opportunities for students to experience STEM education both on-campus and at their home districts.	South Carolina School Districts	5001.000000.000	
3.2.3	Continue to grow Accelerate Engineering Statewide program	21	22	Count	Equal to or greater than	Other	Number of sites participating for the Accelerate Engineering Program	School Records	GSSM Accelerate/TEAM UP	Expand STEM opportunities for our school districts.	South Carolina School Districts	5001.000000.000	

# 2023

## Budget Data

as submitted for the Accountability Report by:

### H650 - Governor's School for Science and Math

State Funded Program No.	State Funded Program Title	Description of State Funded Program	(Actual) General	(Actual) Other	(Actual) Federal	(Actual) Total	(Projected) General2	(Projected) Other	(Projected) Federal4	(Projected) Total
5001.000000.000	Governor's School for Science and Mathematics	Education of academically talented students with accelerated instruction of STEM courses.	\$ 16,057,576.00	\$ 3,483,744.00	\$ -	\$ 19,541,320.00	\$ 17,623,354.00	\$ 723,345.00	\$ -	\$ 18,346,699.00

# 2023

## Legal Data

as submitted for the Accountability Report by:

### H650 - Governor's School for Science and Math

Law number	Jurisdiction	Type	Description	Purpose the law serves:	Notes:	Changes made during FY2023
59-48-10	State	Statute	Establishment of school.	Requires a service	Accelerated instruction in mathematics and science in a residential educational setting.	No Change
59-48-20	State	Statute	Board of trustees; appointment; term of office; compensation.	Board, commission, or committee on which someone from our agency must/may serve		No Change
CHAPTER 48. HISTORY: 1987 Act No. 170, Part II, Section 23.	State	Statute	Establish School and Governing Body 1987	Board, commission, or committee on which someone from our agency must/may serve		No Change
Proviso 1.88	State	FY 2021-22 Proviso	GSSM will develop a plan to operate the school separately from the Department of Education.	Requires a manner of delivery		No Change
Proviso 10.2	State	FY22-23 Proviso	10.2. (SDE: Governor's School Leave Policy) The South Carolina Governor's School for the Arts and Humanities and the South Carolina Governor's School for Science and Mathematics are authorized to promulgate administrative policy governing annual and sick leave relative to faculty and staff with the approval of their respective board of directors. This policy shall address their respective school calendars in order to comply with the instructional needs of students attending both special schools.	Requires a manner of delivery	Formerly Proviso 1.21	No Change
Proviso 10.3	State	FY22-23 Proviso	10.3. (SDE: Governor's Schools' Fees) The South Carolina Governor's School for the Arts and Humanities and the South Carolina Governor's School for Science and Mathematics are authorized to charge, collect, expend, and carry forward student fees as approved by their respective Board of Directors. The purpose and amount of any such fees will be to maintain program quality in both academics and residential support. No student will be denied admittance or participation due to financial inability to pay. The respective Board of Directors shall promulgate administrative policy governing the collection of all student fees. Both schools shall conspicuously publish a fee schedule on their respective websites. All student fees must be reported by August first of the current fiscal year to the Governor, the Chairman of the Senate Finance Committee, and the Chairman of the House Ways and Means Committee.	Funding agency deliverable(s)	Formerly Proviso 1.28	No Change

Law number	Jurisdiction	Type	Description	Purpose the law serves:	Notes:	Changes made during FY2023
Proviso 10.4	State	FY22-23 Proviso	10.4. (SDE: Governor's Schools Residency Requirement) Of the funds appropriated, the Governor's School for the Arts and the Humanities and the Governor's School for Science and Mathematics are to ensure that a parent(s) or guardian(s) of a student attending either the Governor's School for the Arts and the Humanities or the Governor's School for Science and Mathematics must prove that they are a legal resident of the state of South Carolina at the time of application and must remain so throughout time of attendance. The Governor's School for the Arts and the Humanities and Governor's School for Science and Mathematics may not admit students whose parent(s) or guardian(s) are not legal residents of South Carolina.	Report our agency must/may provide	Formerly Proviso 1.43	No Change
Proviso 10.5	State	FY22-23 Proviso	10.5. (SDE: Governor's Schools Informational Access to Students) For the current fiscal year, school districts must permit both the Governor's School for the Arts and Humanities and the Governor's School for Science and Mathematics to collaborate with individual schools and their staff to share information with students and families about the educational opportunities offered at the respective Governor's Schools, through avenues including school visits, informational presentations, and posters. By June thirtieth, of the current fiscal year, the Governor's School for the Arts and Humanities and the Governor's School for Science and Mathematics must report to the Chairman of the Senate Finance Committee and the Chairman of the House Ways and Means Committee the results of these Informational Access efforts. Further, the two Governor's Schools will work with districts, the Department of Education and School Report Card administrators, to ensure that SAT scores of current Governor's Schools' students are included in the School Report Card of those students' resident schools and districts.	Report our agency must/may provide	Formerly Proviso 1.58	No Change
Proviso 10.1	State	FY 2019-20 Proviso	10.1. (SDE: Governor's School for Science & Math) Any unexpended balance on June thirtieth of the prior fiscal year of funds appropriated to or generated by the Governor's School for Science and Mathematics may be carried forward and expended in the current fiscal year pursuant to the direction of the board of trustees of the school.	Funding agency deliverable(s)	Formerly Proviso 1.7	No Change

Law number	Jurisdiction	Type	Description	Purpose the law serves:	Notes:	Changes made during FY2023
Proviso 117.15	State	FY22-23 Proviso	117.15. (GP: Allowance for Residences & Compensation Restrictions) That salaries paid to officers and employees of the State, including its several boards, commissions, and institutions shall be in full for all services rendered, and no perquisites of office or of employment shall be allowed in addition thereto, but such perquisites, commodities, services or other benefits shall be charged for at the prevailing local value and without the purpose or effect of increasing the compensation of said officer or employee. The charge for these items may be payroll deducted at the discretion of the Comptroller General or the chief financial officer at each agency maintaining its own payroll system. This shall not apply to the Governor's Mansion, nor to guards at any of the state's penal institutions and nurses and attendants at the Department of Disabilities and Special Needs, and registered nurses providing clinical care at the MUSC Medical Center, nor to the Superintendent and staff of John de la Howe School, nor to the cottage parents and staff of Wil Lou Gray Opportunity School, nor to full-time or part-time staff who work after regular working hours in the SLED Communications Center or Maintenance Area, nor to adult staff at the Governor's School for Science and Mathematics and the Governor's School for Arts and Humanities who are required to stay on campus by the institution because of job requirements or program participation. Any state institution of higher learning may provide complimentary membership privileges to employees who work at their wellness centers. The presidents of those state institutions of higher learning authorized to provide on-campus residential facilities for students may be permitted to occupy residences on the grounds of such institutions without charge.	Requires a manner of delivery		No Change
Proviso 117.43	State	FY22-23 Proviso	117.45. (GP: Facility Rental Fee) The Governor's School for the Arts and Humanities, Governor's School for Science and Mathematics, Wil Lou Gray Opportunity School, and John de la Howe School are authorized to charge, collect, expend and carry forward fees charged for facility and equipment rental and registration	Funding agency deliverable(s)		No Change

Law number	Jurisdiction	Type	Description	Purpose the law serves:	Notes:	Changes made during FY2023
Proviso 1A.4	State	FY22-23 Proviso	<p>1A.4 (SDE-EIA: Teacher Salaries/State Agencies) Each state agency which does not contain a school district but has instructional personnel shall receive an appropriation as recommended by the Education Oversight Committee and funded by the General Assembly for teacher salaries based on the following formula: Each state agency shall receive such funds as are necessary to adjust the pay of all instructional personnel to the appropriate salary provided by the salary schedules of the school district in which the agency is located.</p> <p>Instructional personnel may include all positions which would be eligible for EIA supplements in a public school district, and may at the discretion of the state agency, be defined to cover curriculum development specialists, educational testing psychologists, psychological and guidance counselors, and principals. The twelve-month agricultural teachers located at Clemson University are to be included in this allocation of funds for base salary increases. The South Carolina Governor's School for the Arts and Humanities and the South Carolina Governor's School for Science and Mathematics are authorized to increase the salaries of instructional personnel by an amount equal to the percentage increase given by the School District in which they are both located.</p>	Report our agency must/may provide		No Change

# 2023

## Services Data

as submitted for the Accountability Report by:

H650 - Governor's School for Science and Math

Description of Service	Description of Direct Customer	Customer Name	Others Impacted by Service	Division or major organizational unit providing the service.	Description of division or major organizational unit providing the service.	Primary negative impact if service not provided.	Changes made to services during FY2023	Summary of changes to services
Advanced Educational Programs	General Public and subsections to include families with school-age children appropriate for GSSM program Participation.	South Carolina Students	Higher Education, Business Partners, General Public	Academics	Advanced Curriculum and Training	Fewer opportunities for advanced STEM education.	No Change	
Provide Residential Environment for Well-being and Development	Families with school-age children appropriate for GSSM program Participation.	South Carolina Students		Life in Residence	Provide Residential Environment for Well-being and development of students staying on-campus	High-level educational process will be compromised and hinder learning.	No Change	
Advanced Educational Programs - Statewide, grades 7-12, Teacher Development & Growth	General Public and subsections to include families with school-age children appropriate for GSSM program Participation.	South Carolina Students	Higher Education, Business Partners, General Public, School Districts	Outreach	Statewide Educational Programs for students and Teachers, to include Engineering, Summer Camps, 9th grade Algebras II, Professional Development for Teachers and Distance Education in Advanced Courses.	Fewer opportunities to expose younger students to STEM opportunities provide by GSSM.	No Change	
Meet Reporting and Stewardship Needs	General Public and taxpaying citizens of South Carolina	Taxpayers of South Carolina	Executive and Legislative Branch, General Public, Business Partners	Administration	Meet Reporting and Stewardship Needs	Risk of underspending or overspending in areas of GSSM.	No Change	

# 2023

## Partnerships Data

as submitted for the Accountability Report by:

H650 - Governor's School for Science and Math

Type of Partner Entity	Name of Partner Entity	Description of Partnership	Change to the partnership during the past fiscal year
Private Business Organization	Business/Industry Partnerships	Outreach and Residential efforts and support to include Accelerate Engineering, Economics and Finance, Mandarin Chinese Foreign Language Instruction and many others	No Change
Higher Education Institute	Clemson University	Course equivalency agreements for course credit. Summer Advanced Research placements of GSSM students on campus and with University Scientists	No Change
Higher Education Institute	Coker University	Dual Enrollment agreements for course credit.	No Change
Higher Education Institute	College of Charleston	Summer Advanced Research placements of GSSM students on campus and with University Scientists	No Change
Higher Education Institute	MUSC	Summer Advanced Research placements of GSSM students on campus and with University Scientists	No Change
K-12 Education Institute	S.C. Elementary Schools	Provide Teacher Training and Outreach Programs for teachers and students. Recruit and partner on educational Initiatives	No Change
K-12 Education Institute	S.C. High Schools	Provide Teacher Training and Outreach Programs for teachers and students. Recruit and partner on educational Initiatives	No Change
K-12 Education Institute	S.C. Middle Schools	Provide Teacher Training and Outreach Programs for teachers and students. Recruit and partner on educational Initiatives	No Change
Higher Education Institute	S.C. State	Summer Advanced Research placements of GSSM students on campus and with University Scientists. Teacher Training and Engineering partnerships	No Change
K-12 Education Institute	School Districts in South Carolina	Provide Teacher Training and Outreach Programs for teachers and students. Recruit and partner on educational Initiatives	No Change
Higher Education Institute	University of South Carolina	Course equivalency agreements for course credit. Summer Advanced Research placements of GSSM students on campus and with University Scientists	No Change
Higher Education Institute	Francis Marion University	Dual Enrollment agreements for course credit.	Add



# 2023

## Reports Data

as submitted for the Accountability Report by:

### H650 - Governor's School for Science and Math

Report Name	Law Number (if applicable)	Summary of information requested in the report	Date of most recent submission DURING the past fiscal year	Reporting Frequency	Type of entity/entities	Method to access the report	Direct access hyperlink or agency contact (if not provided to LSA for posting online)	Changes to this report during the past fiscal year	Explanation why a report wasn't submitted
Annual State Audit	SECTION 11-7-20	Policies and Procedures review, Variances in Line Items, Justifications	August-21	Annually	South Carolina state agency or agencies	Electronic copy available upon request	<a href="https://osa.sc.gov/wp-content/uploads/2021/11/GSSM-H6320-Final.pdf">https://osa.sc.gov/wp-content/uploads/2021/11/GSSM-H6320-Final.pdf</a>	No Change	
S.C. School Report Card	SECTION 59-18-110	Benchmarks and metrics in comparison to public schools	October-21	Annually	South Carolina state agency or agencies	Electronic copy available upon request	<a href="https://screportcards.com/overview/?q=ct0yMDIkdjQ9RCZzaWQ9NTMSNTAwMA">https://screportcards.com/overview/?q=ct0yMDIkdjQ9RCZzaWQ9NTMSNTAwMA</a>	No Change	
SC Governor's School for Science and Mathematics Annual Budget		Budget Priorities and Justifications - For Approval	September-21	Annually	South Carolina state agency or agencies	Electronic copy available upon request	Finance and Operations Department 843-383-3901	No Change	
State Budget Request		Budget Priorities and Justifications	September-21	Annually	Governor or Lt. Governor AND Legislative entity or entities AND South Carolina state agency or agencies	Electronic copy available upon request	<a href="https://admin.sc.gov/sites/default/files/budget/FY23%20H650%20-%20GSSM%20REVISED%201.26.22.pdf">https://admin.sc.gov/sites/default/files/budget/FY23%20H650%20-%20GSSM%20REVISED%201.26.22.pdf</a>	No Change	
State Human Affairs Commission Report to the General Assembly	SECTION 1-13-110	Hiring and Minority Employment Assessment	February-22	Annually	Legislative entity or entities AND South Carolina state agency or agencies	Electronic copy available upon request	<a href="https://scstatehouse.gov/reports/HumanAffairs/Comm/SCHAC%20Report%20to%20the%20General%20Assembly%202022.pdf">https://scstatehouse.gov/reports/HumanAffairs/Comm/SCHAC%20Report%20to%20the%20General%20Assembly%202022.pdf</a>	No Change	

<b>AGENCY NAME:</b>	South Carolina Governor's School for Science and Mathematics		
<b>AGENCY CODE:</b>	H650	<b>SECTION:</b>	10

**2023**  
**Accountability Report**

**SUBMISSION FORM**

I have reviewed and approved the data submitted by the agency in the following templates:

- Data Template
  - Reorganization and Compliance
  - FY2023 Strategic Plan Results
  - FY2024 Strategic Plan Development
  - Legal
  - Services
  - Partnerships
  - Report or Review
  - Budget
- Discussion Template
- Organizational Template

I have reviewed and approved the financial report summarizing the agency’s budget and actual expenditures, as entered by the agency into the South Carolina Enterprise Information System.

The information submitted is complete and accurate to the extent of my knowledge.

<b>AGENCY DIRECTOR</b> <i>(SIGN AND DATE):</i>	<b>SIGNATURE ON FILE</b>	<b>Signature Received:</b> 9/14/2023 3:56 PM
<i>(TYPE/PRINT NAME):</i>	Daniel S. Dorsel, President	

<b>BOARD/CMSN CHAIR</b> <i>(SIGN AND DATE):</i>	<b>SIGNATURE ON FILE</b>	<b>Signature Received:</b> 9/14/23 3:56 PM
<i>(TYPE/PRINT NAME):</i>	Robert J. Brown, Chairman, Board of Trustees	