



2023 Annual Accountability Report

**South Carolina State University
Public Service Activities**

Agency Code: P210

Table of Contents

Agency’s Discussion and Analysis	1
Agency Organization Chart	7
Reorganization and Compliance	8
Strategic Plan Results	10
Strategic Plan Development	13
Budget Data	15
Legal Data	16
Services Data.....	17
Partnerships Data.....	18
Reports Data	24
Submission Form.....	26

AGENCY NAME:	South Carolina State PSA		
AGENCY CODE:	P210	SECTION:	046

AGENCY’S DISCUSSION AND ANALYSIS

South Carolina State PSA had a very successful and productive year for Fiscal Year 2022 – 2023. Research and Extension continued to provide quality outreach services and implement innovative and up-to-date research studies that enhanced the quality of life of many citizens within the state. SC State P210 funded projects and programs in five different critical areas. The Critical Issues addressed were (1) Agribusiness and Community Development, (2) Agrisystems Productivity and Profitability, (3) Environmental and Natural Resources Conservation, (4) Family and Youth Development and (5) Food Safety, Security, and Nutrition. Researchers continue to explore life changing experiences to allow Extension agents to provide resources and solutions to issues for a better way of life. The SC State P210 funding helped to prepare South Carolinians to prosper. The intent was to make them better than the program found them. The P210 funding continued to enhance the vision of 1890 Research and Extension by pursuing an improved quality of life and higher standard of living for the residents of South Carolina. The concept of integrating research, teaching and public service is an added value to the experience provided to the participants in the program delivery of services.

The SC State P210 funding addresses the quality-of-life opportunities for the residents of South Carolina with a special emphasis on the underserved individuals and communities. The programmatic focus is based on the needs identified by the stakeholders as emerging issues impacting their communities. Many vital self-sustaining and economically enriching programs/activities were delivered and administered to the residents of South Carolina.

During the FY 2022-2023 reporting period, SC State continued to address critical issues and problems impacting limited-resource youth, adults, and families in America, especially the rural populations. Research and outreach have been consistent with programming across the seven regions, streamlining curriculums and delivery periods. In addition, the SC State P210 enhanced their public image as well as the University’s image. New and innovative initiatives were implemented, which caused a need to increase staff and seek specialized professionals in the work force. A total of 17 new hires were employed throughout the year as the organization continued to build to enhance and expand program services.

SC State has had a very exciting and rewarding year. The administration and staff increased state and federal appropriations by 34% for 2022. A total of \$1,105,263 was awarded in Ag-Innovation Scholarship funding. A total of 56 Ag-Innovation Scholars were awarded full scholarships. Five USDA Scholars were afforded full scholarships. During the summer of 2023, SC State employed 15 student summer interns. Twelve research projects received funding to explore and examine the five critical issues identified by SC State. Release time dollars saved by the University was \$390,719.31.

A total of 86 Memorandum of Agreements (MOAs) were established to provide outreach services throughout the seven SC State regions. There were 506 workshops conducted across the program areas with 7 virtual classes taught, 19 hybrid programs conducted, and 1183 traditional classes implemented. The overall direct contacts for the services rendered during the reporting period was 46,534, while the indirect contacts were 514,494.

The Marketing and Communications Unit continued to expand the SC State brand. Several new marketing assets were implemented. A premiere pilot entitled “Growing Palmetto” was initiated. The pilot highlighted activities, services, programs, and research within the SC State program. To date, 2 episodes were prepared for viewing on “@scstate1890”. Another release was a digital magazine called “Cultivate Today”. The magazine featured staff spotlights; activities, events, and programs; research endeavors and

AGENCY NAME:	South Carolina State PSA		
AGENCY CODE:	P210	SECTION:	046

information on the College of Agriculture, Family and Consumer Sciences. When looking at the analytics of the SC State media market, Facebook reached 141,858 people, Instagram reached 51,358, while Twitter had a reach of 192,162. LinkedIn had a reach of 30,133, while YouTube reached 186,750. Mailchimp had 2,546 contacts.

Under the Critical Issue of Agribusiness and Community Development, the SC State Research and Extension Program revamped its community and economic development program to promote economic vitality through small-business development and expand entrepreneurial collaborations in agriculture and non-agricultural sectors in South Carolina. A state program leader and program coordinator were hired for the community and economic development unit. The goal is to hire a full staff and train at least 6 agents to conduct business across the seven regions. The SC State Unit seeks to build capacity and promote economic vitality via public service, continuing education, technical assistance, and economic development activities that address the needs, and improve the quality of life for South Carolina citizens. The primary objective of the Community and Economic Development Unit is to serve as a catalyst through facilitating collaborations and providing direct technical assistance, thus combining public and private resources to create entrepreneurial ecosystems (economic, environmental, cultural, political, and social conditions) across the state that are responsive to community needs for economic vibrancy. The Community and Economic Development Unit will concentrate on small business training and assistance, leadership training and development, non-profit development, workforce development and rural development.

The SC State Research component funded two research projects during the reporting period. The first project dealt with improving farm performance through financial literacy education among farmers in South Carolina. The farmers showed an overall significant increase in financial literacy knowledge of 45.38% from the pre and post-test. Eighty-four-point three percent of the participants agreed the financial workshops helped them to manage their finances. They (85.4%) planned to adopt and utilize the information from the presentation(s). Project number two focuses on improving profitability and sustainability through the food hub network for small farmers in South Carolina. An in-depth review of the literature related to food hub network research was conducted for the best practices. A working paper was developed and presented at 2 conferences, along with 2 abstracts from research assistants. A literature reviewed paper was submitted to a refereed journal and accepted for publication.

Under the Agrisystems Productivity and Profitability Critical Issue, agents accumulated 5,285 direct contact hours through the Sustainable Agriculture and Natural Resources Environment Program, which incorporates sustainable animal production, risk management, vegetable production, natural resources, and integrated pest management (IPM). The program offers an important public service for rural and urban limited-resource families seeking the latest research-based scientific knowledge for sustainable practices in agriculture and natural resources to improve production and marketing of quality crops and livestock to realize a profit and sustain their farming operations. Two hundred twenty producers indicated adoption of the recommended practices. Sixty-four of the producers increased their revenue. There were 65 (62 traditional sessions; 2 hybrid and 1 virtual) workshops and events held. Six presentations were made at professional meetings/conferences.

The SC State Research component had one project in agrisystems, productivity and profitability. The research is an Artificial Intelligence (AI) based advanced Ag-drone system for local farmers in South Carolina. The usage of the drone technology is to help diagnose and manage plant diseases, leading to sustainable and profitable production. The student research team collected diseased and non-diseased

AGENCY NAME:	South Carolina State PSA		
AGENCY CODE:	P210	SECTION:	046

plant leave samples, dry and wet soil samples and have applied AI algorithms on the collected samples to evaluate the models. The research results were shared with the public and research communities through conferences and publications.

In looking at the critical issue of Environmental and Natural Resources Conservation, the Extension component of PSA was reported within the Critical Issue of Agrisystems Productivity and Profitability. However, there are 2 research projects that deal with Environmental and Natural Resources Conservation. Project one focuses on climatic impacts and predictability of soil erosivity and precipitation over the Southeastern United States. The researcher investigated climatic teleconnections between warm and cold phases of El Nino-Southern Oscillation (ENSO) and precipitation patterns over the United States using an empirical methodology designed to detect regions showing a strong and consistent hydroclimatic signal associated with the extreme phases of ENSO episodes. As a result of vectorial mapping, 5 core regions were designated as North-West region (NW), South-West region (SW), Middle-Inland region (MI), South-East region (SE), and North-East region (NE). During the fall (O) to spring (+) seasons, the results of the analysis showed below (above) normal precipitation response to the El Nino events at the NW region (SW, MI, SE, and NE regions), while the opposite patterns were detected for the cold phase of ENSO. The temporal consistency values were 0.72 to 0.86 (0.77 to 0.82), and spatial coherence values ranged from 0.96 to 0.99 (0.94 to 0.99) for the warm (cold) events. The time series of monthly precipitation records applied in the analysis were on 344 divisions distributed all over the United States.

Another SC State project dealt with atmospheric water generators from modified post-consumer plastics (PCP). The project investigated reducing the amount of PCP pollutants by reusing them to build atmospheric water generation (AWG). Also, to provide potable water where needed by developing proper AWGs. The research repurposed the energy required to collect, transport, and discard PCPs to manufacture fibers, yarns, films, rods, and frames for AWGs. The plan was to impact society by increasing the knowledgeable workforce, train students, improve water security, reduce waste plastics (WPs), and save energy. The researcher has designed and launched a comprehensive program to train undergraduate students on reusing, recycling, and extracting the resins from WPs, making intelligent materials to absorb moisture and desorb water as the building blocks of AWGs. The overall efforts will impact saving energy and the invention of new commodities for the improvement of life in a healthier and cleaner environment.

The Critical Issue of Family and Youth Development focused on the outreach programs and services offered to the citizens of South Carolina provide life-long learning opportunities that help rural and urban limited-resource participants improve their quality of living. The 4-H Youth Development Program focused on four specific project areas: citizenship, healthy lifestyles, financial management and STREAM (Science, Technology, Reading, Engineering, Art/Agriculture, Mathematics). The SC State Extension Program provided youth statewide the opportunity to learn by doing and enhance the ability of youth to become leaders in their community. A total of 20,456 direct contacts were made with youth. One hundred ninety-two workshops were conducted and 87% of the youth gained knowledge. One great accomplishment was the Literacy Tour. The tour was held to promote the importance of literacy, storytelling and families learning together across the 7 Regions. SC State/1890 Extension and The Molina Foundation partnered to donate 30,000 children's books to schools, families, and community organizations during a statewide literacy tour.

The Agriculture (Ag) Innovation Scholarship Program is a four-year scholarship for students interested in pursuing a career in agriculture who have declared Agribusiness or Family and Consumer Sciences as a

AGENCY NAME:	South Carolina State PSA		
AGENCY CODE:	P210	SECTION:	046

major at SC State University. The Ag Scholarship Program provided professional opportunities/workshops, academic coaching, and other student support opportunities to ensure scholarship recipients were retained and graduate from SC State. There were 66 scholarship recipients for FY 2022-2023. The first Ag Scholar graduated in May 2022. Educational workshops conducted was 21, which 735 completed the workshops. Ten hybrid programs were developed and conducted during the reporting period. The program accounted for 4,484 direct contacts.

The Critical Issue of Food Safety, Security and Nutrition has an impact on everyone and is a serious issue. To help combat the issues related to the identified critical issue, the Family Nutrition and Health Program was implemented. The program aims to introduce strategies to communities that will help support healthy life-style habits. It is designed to assist participants in acquiring knowledge, obtaining skills, developing positive attitudes, and changing behaviors. SC State Extension utilizes Family Life, Household and Family Financial Management and Expanded Food and Nutrition Education Program (EFNEP) to help improve healthy life-styles of youth and adults. The projects served 14,974 direct contacts and engaged in 139 workshops and events. As the staff implemented the projects, they conducted 135 traditional programs, 3 hybrid and 2 virtual classes. Sixteen Memorandums of Agreements (MOAs) were established with entities across the state to conduct life changing experiences.

Regarding research at SC State, the critical issue of Food Safety, Security and Nutrition has two research projects. One project focuses on investigating nutrition as a key prophylaxis against chronic inflammation and other comorbidities in South Carolina. In other words, you are what you eat. Nutrition plays a significant role not only in human health, but also in the prevention of diseases. The research launched a podcast to address proper nutrition, healthy eating, and aid in the dissemination of knowledge about "You Are What You Eat". The podcast tool was used to recruit 25 participants, during COVID-19, to participate in a dietary intervention for 3 months. A contract was secured with a meal company to provide healthy nutritious meals. A significant change in attitudes and perceptions of people on the impact of food on their lives is expected.

More SC State research is on the analysis of phytochemicals isolated from sweet potatoes grown on South Carolina farms and antibacterial effects of sweet potato phenolic extracts on foodborne pathogens. The researcher conducted experiments for testing the quality characteristics of sweet potatoes collected from local farms in South Carolina. The researcher was able to determine the amounts of individual phenolic compounds and antioxidant activity in the sweet potato. Scientific presentations and posters were developed for meetings and conferences sharing the results of the data.

In review of the risk management and mitigation strategies for SC State P210, the most negative impact on the public that could result in the case of the agency's failure to accomplish its goals and objectives would be the lack of adequate and necessary funding. Without the appropriate funding, the existing programs/activities would have to be evaluated, limited, and/or possibly eliminated. There would be no room for growth and expansion of existing or implementing any new or innovative programs/activities. There would have to be a cap on the number of people to which the organization could provide services in the various regions. Only a few counties would benefit from the delivery of services. The 100% non-federal match is a requirement, which is critical and crucial to the goals and objectives of the organization. The General Assembly's perception and understanding of the importance of having a 100% match is very relevant to the fulfillment of the mission and achieving the organization goals. The General Assembly could help resolve the issue before it becomes a crisis by allocating the 100% match. With the total match, the organization would be able to follow through with their goals and objectives. The General Assembly

AGENCY NAME:	South Carolina State PSA		
AGENCY CODE:	P210	SECTION:	046

can put the organization in contact with stakeholders from their counties, who may have a vested interest in the initiatives of P210. Also, the General Assembly can help foster and provide an understanding to constituents of the programs and services the P210 funding offers the citizens of South Carolina.

The SC State continues to implement the strategic plan that will underpin the organization operations and services. The overall objectives are to

1. Enhance the public image of 1890 Research and Extension as a premier resource for information and community education through innovative cutting-edge relevant research, delivery of significant programs and services.
2. Attract and retain high-quality passionate employees through consistent and effective on-boarding, professional development, mentorship, promotion, and retention by ensuring staff has the support they need to do their best work and take their skills to the next level.
3. Expand and increase the reach of research inquiry and extension programs to underserved and emerging audiences to all 46 counties in South Carolina, the southeast region and internationally.
4. Acquire, build, and upgrade existing facilities to provide the highest quality spaces for the important work of researchers, agents, and students as we prepare for the next century of success.
5. Integration of digital technology as an essential tool for the dissemination of research findings and delivery of extension educational programming to provide a sustainable model to fulfill the organization’s mission.
6. Identify and secure public and private resources as well as revenue generating opportunities to support the successful implementation and support of core research, outreach, new initiatives and create a financial buffer to reduce major impacts of future cuts or economy downturns.
7. Demonstrate accountability of public funds and
8. Uphold a culture of integrity, excellence, stewardship, and accountability in pursuit of Specific Measurable Achievable Realistic Time (SMART) bound, while Frequent Ambitious Specific Transparent (FAST) services are obtained and delivered.

In reviewing the factors that may or may not impact the internal and external performance of the organization, the administration must be mindful of

1. Submitting an approved USDA/NIFA Plan of Work (POW) Accomplishments and Results Report as well as an Annual POW Plan in a timely manner into the federal reporting system.
2. An official and professional electronic reporting system is long over due to collect and interpret data of program activities. A company has been retained to assist in the preparation and implementation of an effective reporting system statewide.
3. Strengthen program development.
4. Availability of faculty release time to conduct research.
5. Prepare the Mobile Technology Center (MTC) for use and expand the technology focus to travel across the state assisting regions with programs.
6. Expand the professional development training for Research and Extension staff.
7. Emphasize the land grant tradition of public service.
8. Assist academic areas in developing new and innovative programs/activities.
9. Develop Smart Farms as a resource for farmers.
10. In 2022-2023, work continued to be done to renovate and upgrade 1890 facilities construction projects. SC State worked on 8 facility projects throughout the year. Some of the yearly highlights include a complete building renovation to with a demonstration kitchen, 8 offices, 3 classrooms and a multipurpose center in the **Upstate Region (Anderson)**. Renovation and construction were completed as of June 2023. In the **Capital Region (Cayce)**, the building is in the design phase. The renovations will include 25 offices, 2 conference rooms, a television studio, radio station, 10 multipurpose research labs, and 2 ensuites. The project is expected to go out to bid in winter/spring 2024. The **Olar Demonstration Farm** is currently in design. It is a new construction of 20,000 square feet building to include 6 research labs, an AI lab, 2 ensuites, 10 offices and 1 conference room with a seating capacity of 250 guests. In the **Pee Dee Region (Florence)**, renovations are to begin on the second floor. Construction to include a demonstration kitchen, 3 conference rooms, meeting space and chair lift. Bid was awarded August 2023. The **Catawba Region (Rock Hill)** 11,000 square feet building is in design. There will be a demonstration kitchen, conference room, 14 offices, a multipurpose room, labs, and classrooms. The **Camp Harry E. Daniels Conference**

AGENCY NAME:	South Carolina State PSA		
AGENCY CODE:	P210	SECTION:	046

Center was renovated and completed March 2023. It is presently in use. The cabin renovations are out to bid. The Camp Daniels infrastructure is in design. With the various projects underway, the expectation is for much work to be completed within the next fiscal cycle. 11. The inability to hire individuals with the proven, demonstrated skills necessary to secure external funds would interfere with the 1890 Program’s ability to achieve it external funding goals. 12. Enhance opportunities to strengthen and develop more collaborations and partnerships across the state with various entities. 13. Continue to purchase new facilities to accommodate the increase of staff, expand programs and activities, and provide an SC State 1890 presence across the state.

AGENCY NAME:

South Carolina State University PSA

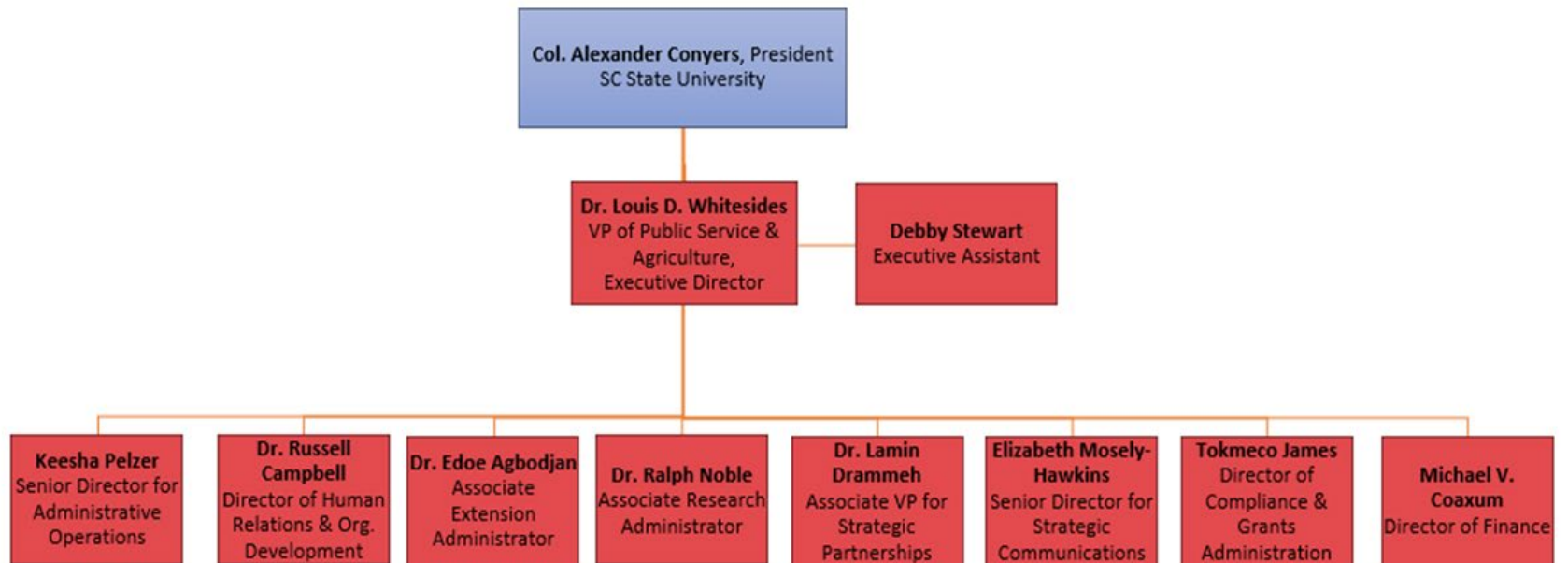
AGENCY CODE:

P210

SECTION:

046

AGENCY ORGANIZATIONAL CHART



2023

Reorganization and Compliance

as submitted for the Accountability Report by:

P210 - SC State University

Primary Contact

First Name	Last Name	Role/Title	Email Address	Phone
Sharon	Wade-Byrd	Director of Accountability and Plan of Work	Swadel@scsu.edu	803 536 8697

Secondary Contact

First Name	Last Name	Role/Title	Email Address	Phone
Michael	Coaxum	Director of Finance	mcoaxum1@scsu.edu	803 813 1370

Agency Mission

Adopted in:

2018

The mission of SC State PSA is to promote an organized research and extension system that incorporates stakeholders' input into the design, implementation and evaluation of programs, activities and services, which address quality of life issues by providing research-based solutions for South Carolinians.

Agency Vision

Adopted in:

2018

The SC State PSA vision is to be a resource in the delivery of innovative and effective outreach programs and activities as well as cutting edge research in pursuit of an improved quality of life and higher standard of living for the residents of the State of South Carolina.

Recommendations for reorganization requiring legislative change:

None

Agency intentions for other major reorganization to divisions, departments, or programs to allow the agency to operate more effectively and efficiently in the succeeding fiscal year:

None

Significant events related to the agency that occurred in FY2023

Description of Event	Start	End	Agency Measures Impacted	Other Impacts
Two SC State 1890 Ag Scholars were named USDA Future Leaders in agriculture. Each year 30 students are selected from land-grant and non-land-grant colleges to attend the forum. A special announcement took place at the 99th Annual Agricultural Outlook Forum in Washington, DC.	February	February	Number of summer academics/camps designed to increase educational attainment and enhance the occupational outlook of participants.	The students were able to network with other students and USDA leaders to gain knowledge about agriculture organizations, opportunities and policies.
SC State PSA successfully negotiated and secured approvals of two national awards with USDA-NRCS.	May	June	Number of participants gaining knowledge from small farm assistance and outreach programs.	The agreement would assist in building markets of climate-smart commodities and invest in America's climate-smart producers to strengthen U. S. rural and agricultural communities.
SC State PSA launched a new Institute/Center of Excellence: Center for Food Safety and Health	October	June	Number gained knowledge about eating more of healthy foods.	Recommend safe and secure nutritional procedures/habits.

Renovated and reopened the historic Harry E. Daniels Conference Center in Elloree, SC.	April	June	Number of Outreach Activities held by 1890 for the External Community.	By reopening the Center, there will be more opportunities for external outreach activities as well as internal endeavors. Since the opening, various events have taken place at the facility.
Is the agency in compliance with S.C. Code Ann. § 2-1-220, which requires submission of certain reports to the Legislative Services Agency for publication online and the State Library? (See also S.C. Code Ann. § 60-2-20).				Yes
Reason agency is out of compliance: (if applicable)				
Is the agency in compliance with various requirements to transfer its records, including electronic ones, to the Department of Archives and History? See the Public Records Act (S.C. Code Ann. § 20-1-10 through 20-1-180) and the South Carolina Uniform Electronic Transactions Act (S.C. Code Ann. § 26-6-10 through 26-10-210).				Yes
Does the law allow the agency to promulgate regulations?				No
Law number(s) which gives the agency the authority to promulgate regulations:				
Has the agency promulgated any regulations?				No
Is the agency in compliance with S.C. Code Ann. § 1-23-120 (J), which requires an agency to conduct a formal review of its regulations every five years?				No
(End of Reorganization and Compliance Section)				

FY2023

Strategic Plan Results

as submitted for the Accountability Report by:

P210 - SC State University

- Goal 1** To generate greater harmony between agriculture and the environment.
- Goal 2** To develop a healthy, well-nourished population.
- Goal 3** To enhance economic opportunity and quality of life for Americans.
- Goal 4** To promote an agricultural system that is highly competitive in the global economy.
- Goal 5** To provide a safe and secure food and fiber system.

Perf. Measure Number	Description	Base	Target	Actual	Value Type	Desired Outcome	Time Applicable	Calculation Method	Data Source	Data Location	Stakeholder Need Satisfied	Primary Stakeholder	State Funded Program Number Responsible	Notes
1.1 To provide natural resource and environmental education programming and promote effective water quality strategies.														
State Objective: Education, Training, and Human Development														
1.1.1	Number of new media platforms developed.	6	10		Count	equal to or greater than	State Fiscal Year (July 1 - June 30).	Total Reported by Staff	1890 POW Reporting System	Each regional office and Office of Accountability and Reporting	Expand the media usage of virtual delivery to stakeholders	Children; youth; adults; limited resource persons; small farmers; producers	#1; #2; #3; #4; #5	
1.1.2	Number of participants gaining knowledge from small farm assistance and outreach programs.	1,307	1,538	1,843	Count	equal to or greater than	State Fiscal Year (July 1 - June 30).	Total Reported by Staff	1890 POW Reporting System	Each regional office and Office of Accountability and Reporting	Expanding knowledge on how program services can assist participants	Small farmers, ranchers, producers and landowners	#1; #2; #3; #4; #5	
1.1.3	Number of producers indicated adoption of recommended practices.	280	331	338	Count	equal to or greater than	State Fiscal Year (July 1 - June 30).	Total Reported by Staff	1890 POW Reporting System	Each regional office and Office of Accountability and Reporting	Provide practices to increase crop utilization	Small farmers and producers	#1; #2; #3; #4; #5	
1.1.4	Number of students reached through the 1890 Ag Innovation Scholarship Program	6	10	66	Count	equal to or greater than	State Fiscal Year (July 1 - June 30).	Total Reported by Staff	1890 POW Reporting System	Each regional office and Office of Accountability and Reporting	Identifying the method by which stakeholders prefer to use social media.	Children; youth; adults; limited resource persons; small farmers; producers	#1; #2; #3; #4; #5	
1.1.5	Number of new virtual classes added to the programs/activities	5	15	2	Count	equal to or greater than	State Fiscal Year (July 1 - June 30).	Total Reported by Staff	1890 POW Reporting System	Each regional office and Office of Accountability and Reporting	Increase the knowledge and participation of programs/activities.	Children; youth; adults; limited resource persons; small farmers; producers	#1; #2; #3; #4; #5	
1.1.6	Number of media platforms utilized.	42	62	7	Count	equal to or greater than	State Fiscal Year (July 1 - June 30).	Total Reported by Staff	1890 POW Reporting System	Each regional office and Office of Accountability and Reporting	Increase the number of students wanting to enhance their education	Children; youth; adults; limited resource persons; small farmers; producers	#1; #2; #3; #4; #5	
2.1 To provide family, resource management and educational programs to improve the well-being of the family structure within limited-resource communities.														
State Objective: Healthy and Safe Families														
2.1.1	Number of summer academics/camps designed to increase educational attainment and enhance the occupational outlook of participants.	9	12	26	Count	equal to or greater than	State Fiscal Year (July 1 - June 30).	Total Reported by Staff	1890 POW Reporting System	Each regional office and Office of Accountability and Reporting	Provide knowledge and implement educational activities to enhance student learning	Children and youth	#1; #2; #3; #4; #5	
2.1.2	Number of participants increased knowledge in safe food handling and nutrition.	826	972	280	Count	equal to or greater than	State Fiscal Year (July 1 - June 30).	Total Reported by Staff	1890 POW Reporting System	Each regional office and Office of Accountability and Reporting	Increase skills on safe and effective handling of food	Children, youth and families	#1; #2; #3; #4; #5	

Perf. Measure Number	Description	Base	Target	Actual	Value Type	Desired Outcome	Time Applicable	Calculation Method	Data Source	Data Location	Stakeholder Need Satisfied	Primary Stakeholder	State Funded Program Number Responsible	Notes
2.1.3	Number adopting recommended hand washing practices.	421	497	382	Count	equal to or greater than	State Fiscal Year (July 1 - June 30).	Total Reported by Staff	1890 POW Reporting System	Each regional office and Office of Accountability and Reporting	Provide safe and healthy tips to properly wash hands	Children, youth and families	#1; #2; #3; #4; #5	
3.1 To provide leadership programming to limited resource individuals through the development of educational programs and community economic development initiatives.													State Objective: Public Infrastructure and Economic Development	
3.1.1	Number of Outreach Activities held by 1890 for the External Community.	128	143	115	Count	equal to or greater than	State Fiscal Year (July 1 - June 30).	Total Reported by Staff	1890 POW Reporting System	Each regional office and Office of Accountability and Reporting	New partnerships and/or resources for program implementation	Partnerships with outside agencies	#1; #2; #3; #4; #5	
3.1.2	Number of participants for the External Community Outreach Activities.	5,408	6,367	9,472	Count	equal to or greater than	State Fiscal Year (July 1 - June 30).	Total Reported by Staff	1890 POW Reporting System	Each regional office and Office of Accountability and Reporting	Increase participant participation in outreach activities	Children, youth, families, small farmers, ranchers and landowners	#1; #2; #3; #4; #5	
3.1.3	Number of established cooperative agreements/MOUs.	49	54	86	Count	equal to or greater than	State Fiscal Year (July 1 - June 30).	Total Reported by Staff	1890 POW Reporting System	Each regional office and Office of Accountability and Reporting	Expand partnerships and/or resources for program implementation	Partnerships with faith-based organizations, community centers, government agencies, schools, etc.	#1; #2; #3; #4; #5	
4.1 To assist farmers (small socially disadvantaged, underserved, minority and owners) in retaining their land and reversing the decline in the number of farms in South Carolina.													State Objective: Government and Citizens	
4.1.1	Number of producers indicating adoption of recommended practices.	280	331	338	Count	equal to or greater than	State Fiscal Year (July 1 - June 30).	Total Reported by Staff	1890 POW Reporting System	Each regional office and Office of Accountability and Reporting	Identifying knowledge gained and implemented	Farmers, ranchers, landowners and producers	#1; #2; #3; #4; #5	
4.1.2	Number of attendees at outreach activities.	1,690	1,990	3,043	Count	equal to or greater than	State Fiscal Year (July 1 - June 30).	Total Reported by Staff	1890 POW Reporting System	Each regional office and Office of Accountability and Reporting	Identifying interest in specific program/activities	Children, youth, families, farmers, producers, landowners, etc.	#1; #2; #3; #4; #5	
4.1.3	Number of acres affected by Integrated Crop Management (ICM).	864	1,017	819	Count	equal to or greater than	State Fiscal Year (July 1 - June 30).	Total Reported by Staff	1890 POW Reporting System	Each regional office and Office of Accountability and Reporting	Identify acres affected and provide knowledge to better serve landowner	Producers, landowners and farmers	#1; #2; #3; #4; #5	
5.1 To provide nutrition education that promotes healthy living and allows opportunity for assessing healthy behaviors to deter the prevalence of obesity.													State Objective: Healthy and Safe Families	
5.1.1	Number gained knowledge on healthy eating patterns.	826	972	341	Count	equal to or greater than	State Fiscal Year (July 1 - June 30).	Total Reported by Staff	1890 POW Reporting System	Each regional office and Office of Accountability and Reporting	Demonstrate healthy eating patterns through education	Children, youth, families, farmers, etc.	#1; #2; #3; #4; #5	

Perf. Measure Number	Description	Base	Target	Actual	Value Type	Desired Outcome	Time Applicable	Calculation Method	Data Source	Data Location	Stakeholder Need Satisfied	Primary Stakeholder	State Funded Program Number Responsible	Notes
5.1.2	Number reported an intention to eat more or healthy foods.	675	795	320	Count	equal to or greater than	State Fiscal Year (July 1 - June 30).	Total Reported by Staff	1890 POW Reporting System	Each regional office and Office of Accountability and Reporting	Increase the knowledge of healthy eating through hands-on experiences	Children, youth, families, farmers, etc.	#1; #2; #3; #4; #5	
5.1.3	Number gained knowledge about eating more of healthy foods.	1,624	1,913	332	Count	equal to or greater than	State Fiscal Year (July 1 - June 30).	Total Reported by Staff	1890 POW Reporting System	Each regional office and Office of Accountability and Reporting	Expand skills and knowledge to change lifestyle	Children, youth, families, farmers, etc.	#1; #2; #3; #4; #5	

FY2024

Strategic Plan Development

as submitted for the Accountability Report by:

P210 - SC State University

- Goal 1** To generate greater harmony between agriculture and the environment.
- Goal 2** To develop a healthy, well-nourished population.
- Goal 3** To enhance economic opportunity and quality of life for Americans.
- Goal 4** To promote an agricultural system that is highly competitive in the global economy.
- Goal 5** To provide a safe and secure food and fiber system.

Perf. Measure Number	Description	Base	Target	Value Type	Desired Outcome	Time Applicable	Calculation Method	Data Source	Data Location	Stakeholder Need Satisfied	Primary Stakeholder	State Funded Program Number Responsible	Notes
1.1 To provide natural resource and environmental education programming and promote effective water quality strategies. State Objective: Education, Training, and Human Development													
1.1.1	Number of new media platforms developed.	6	10	Count	equal to or greater than	State Fiscal Year (July 1 - June 30).	Total Reported by Staff	1890 POW Reporting System	Each regional office and Office of Accountability and Reporting	Expand the media usage of virtual delivery to stakeholders	Children; youth; adults; limited-resource persons; small farmers; producers	#1; #2; #3; #4; #5	
1.1.2	Number of participants gaining knowledge from small farm assistance and outreach programs.	1,307	1,538	Count	equal to or greater than	State Fiscal Year (July 1 - June 30).	Total Reported by Staff	1890 POW Reporting System	Each regional office and Office of Accountability and Reporting	Expanding knowledge on how program services can assist participants	Small farmers, ranchers, producers and landowners	#1; #2; #3; #4; #5	
1.1.3	Number of producers indicated adoption of recommended practices.	280	331	Count	equal to or greater than	State Fiscal Year (July 1 - June 30).	Total Reported by Staff	1890 POW Reporting System	Each regional office and Office of Accountability and Reporting	Provide practices to increase crop utilization	Small farmers and producers	#1; #2; #3; #4; #5	
1.1.4	Number of students reached through the 1890 Ag Innovation Scholarship Program	6	10	Count	equal to or greater than	State Fiscal Year (July 1 - June 30).	Total Reported by Staff	1890 POW Reporting System	Each regional office and Office of Accountability and Reporting	Identifying the method by which stakeholders prefer to use social media.	Children; youth; adults; limited-resource persons; small farmers; producers	#1; #2; #3; #4; #5	
1.1.5	Number of new virtual classes added to the programs/activities	5	15	Count	equal to or greater than	State Fiscal Year (July 1 - June 30).	Total Reported by Staff	1890 POW Reporting System	Each regional office and Office of Accountability and Reporting	Increase the knowledge and participation of programs/activities.	Children; youth; adults; limited-resource persons; small farmers; producers	#1; #2; #3; #4; #5	
1.1.6	Number of media platforms utilized.	42	62	Count	equal to or greater than	State Fiscal Year (July 1 - June 30).	Total Reported by Staff	1890 POW Reporting System	Each regional office and Office of Accountability and Reporting	Increase the number of students wanting to enhance their education	Children; youth; adults; limited-resource persons; small farmers; producers	#1; #2; #3; #4; #5	
2.1 To provide family, resource management and educational programs to improve the well-being of the family structure within limited-resource communities. State Objective: Healthy and Safe Families													
2.1.1	Number of summer academics/camps designed to increase educational attainment and enhance the occupational outlook of participants.	9	12	Count	equal to or greater than	State Fiscal Year (July 1 - June 30).	Total Reported by Staff	1890 POW Reporting System	Each regional office and Office of Accountability and Reporting	Provide knowledge and implement educational activities to enhance student learning	Children and youth	#1; #2; #3; #4; #5	
2.1.2	Number of participants increased knowledge in safe food handling and nutrition.	826	972	Count	equal to or greater than	State Fiscal Year (July 1 - June 30).	Total Reported by Staff	1890 POW Reporting System	Each regional office and Office of Accountability and Reporting	Increase skills on safe and effective handling of food	Children, youth and families	#1; #2; #3; #4; #5	

Perf. Measure Number	Description	Base	Target	Value Type	Desired Outcome	Time Applicable	Calculation Method	Data Source	Data Location	Stakeholder Need Satisfied	Primary Stakeholder	State Funded Program Number Responsible	Notes
2.1.3	Number adopting recommended hand washing practices.	421	497	Count	equal to or greater than	State Fiscal Year (July 1 - June 30).	Total Reported by Staff	1890 POW Reporting System	Each regional office and Office of Accountability and Reporting	Provide safe and healthy tips to properly wash hands	Children, youth and families	#1; #2; #3; #4; #5	
3.1 To provide leadership programming to limited resource individuals through the development of educational programs and community economic development initiatives. State Objective: Public Infrastructure and Economic Development													
3.1.1	Number of Outreach Activities held by 1890 for the External Community.	128	143	Count	equal to or greater than	State Fiscal Year (July 1 - June 30).	Total Reported by Staff	1890 POW Reporting System	Each regional office and Office of Accountability and Reporting	New partnerships and/or resources for program implementation	Partnerships with outside agencies	#1; #2; #3; #4; #5	
3.1.2	Number of participants for the External Community Outreach Activities.	5,408	6,367	Count	equal to or greater than	State Fiscal Year (July 1 - June 30).	Total Reported by Staff	1890 POW Reporting System	Each regional office and Office of Accountability and Reporting	Increase participant participation in outreach activities	Children, youth, families, small farmers, ranchers and landowners	#1; #2; #3; #4; #5	
3.1.3	Number of established cooperative agreements/MOUs.	49	54	Count	equal to or greater than	State Fiscal Year (July 1 - June 30).	Total Reported by Staff	1890 POW Reporting System	Each regional office and Office of Accountability and Reporting	Expand partnerships and/or resources for program implementation	Partnerships with faith-based organizations, community centers, government agencies, schools, etc.	#1; #2; #3; #4; #5	
4.1 To assist farmers (small socially disadvantaged, underserved, minority and owners) in retaining their land and reversing the decline in the number of farms in South Carolina. State Objective: Government and Citizens													
4.1.1	Number of producers indicating adoption of recommended practices.	280	331	Count	equal to or greater than	State Fiscal Year (July 1 - June 30).	Total Reported by Staff	1890 POW Reporting System	Each regional office and Office of Accountability and Reporting	Identifying knowledge gained and implemented	Farmers, ranchers, landowners and producers	#1; #2; #3; #4; #5	
4.1.2	Number of attendees at outreach activities.	1,690	1,990	Count	equal to or greater than	State Fiscal Year (July 1 - June 30).	Total Reported by Staff	1890 POW Reporting System	Each regional office and Office of Accountability and Reporting	Identifying interest in specific program/activities	Children, youth, families, farmers, producers, landowners, etc.	#1; #2; #3; #4; #5	
4.1.3	Number of acres affected by Integrated Crop Management (ICM).	864	1,017	Count	equal to or greater than	State Fiscal Year (July 1 - June 30).	Total Reported by Staff	1890 POW Reporting System	Each regional office and Office of Accountability and Reporting	Identify acres affected and provide knowledge to better serve landowner	Producers, landowners and farmers	#1; #2; #3; #4; #5	
5.1 To provide nutrition education that promotes healthy living and allows opportunity for assessing healthy behaviors to deter the prevalence of obesity. State Objective: Healthy and Safe Families													
5.1.1	Number gained knowledge on healthy eating patterns.	826	972	Count	equal to or greater than	State Fiscal Year (July 1 - June 30).	Total Reported by Staff	1890 POW Reporting System	Each regional office and Office of Accountability and Reporting	Demonstrate healthy eating patterns through education	Children, youth, families, farmers, etc.	#1; #2; #3; #4; #5	
5.1.2	Number reported an intention to eat more or healthy foods.	675	795	Count	equal to or greater than	State Fiscal Year (July 1 - June 30).	Total Reported by Staff	1890 POW Reporting System	Each regional office and Office of Accountability and Reporting	Increase the knowledge of healthy eating through hands-on experiences	Children, youth, families, farmers, etc.	#1; #2; #3; #4; #5	
5.1.3	Number gained knowledge about eating more of healthy foods.	1624	1913	Count	equal to or greater than	State Fiscal Year (July 1 - June 30).	Total Reported by Staff	1890 POW Reporting System	Each regional office and Office of Accountability and Reporting	Expand skills and knowledge to change lifestyle	Children, youth, families, farmers, etc.	#1; #2; #3; #4; #5	

2023

Budget Data

as submitted for the Accountability Report by:

P210 - SC State University

State Funded Program No.	State Funded Program Title	Description of State Funded Program	(Actual) General	(Actual) Other	(Actual) Federal	(Actual) Total	(Projected) General2	(Projected) Other	(Projected) Federal4	(Projected) Total
0100.000000.000	Administration	SC State PSA (1890 Research and Extension) personnel are responsible for the overall operation of all activities associated with its land grant role at SC State University under Public Law 95-113 (Evans-Allen Research and Smith-Lever Act).	\$1,030,451.96	0	\$ 371,627.51	\$ 1,402,079.47	\$ 1,081,974.56	\$ -	\$ 390,208.89	\$ 1,472,183.44
0202.000000.000	Research & Extension	To assist small minority farmers in retaining their land and increasing their profitability with alternative enterprises. Also, to promote healthy living through nutrition and health education and provide youth and family development educational programs as well as addressing social, economic and leadership development initiatives in communities, especially rural areas.	\$ 6,382,307.00	\$ -	\$ 3,143,046.64	\$ 9,525,353.64	\$ 6,701,422.35	\$ -	\$ 3,300,198.97	\$ 10,001,621.32
9500.050000.000	State Employer Contributions	Fringe benefits paid on the salaries to the employees for SC State PSA.	\$ 1,390,951.24	\$ -	\$ 651,722.64	\$ 2,042,673.88	\$ 1,460,498.80	\$ -	\$ 684,308.77	\$ 2,144,807.57

2023

Legal Data

as submitted for the Accountability Report by:

P210 - SC State University

Law number	Jurisdiction	Type	Description	Purpose the law serves:	Notes:	Changes made during FY2023
95-113, Section 1444	Federal	Statute	Established authority for 1890 institutions to receive funds to continue agricultural and forestry extension at eligible colleges.	Report our agency must/may provide		No Change
95-113,Section 1445	Federal	Statute	Established authority for 1890 institutions to receive funds to continue agricultural research at eligible colleges.	Report our agency must/may provide		No Change

2023

Services Data

as submitted for the Accountability Report by:

P210 - SC State University

Description of Service	Description of Direct Customer	Customer Name	Others Impacted by Service	Division or major organizational unit providing the service.	Description of division or major organizational unit providing the service.	Primary negative impact if service not provided.	Changes made to services during FY2023	Summary of changes to services
Programs and Activities	Public: Citizens of South Carolina with a special emphasis on underserved communities.	Children; youth; adults	Farmers; ranchers; landowners; producers	1890 Research and Extension	1890 Research and Extension is an organization that provides quality of life opportunities to citizens of South Carolina with a special emphasis on limited-resource communities/individuals.	Funding will be cut and limited resource persons would suffer because of a lack of programs/activities.	No Change	

2023

Partnerships Data

as submitted for the Accountability Report by:

P210 - SC State University

Type of Partner Entity	Name of Partner Entity	Description of Partnership	Change to the partnership during the past fiscal year
K-12 Education Institute	Allendale-Fairfax High School (Low Country Region)	To provide outreach activities to help rural and urban limited-resource clients improve their quality of living in 4-H youth development, family life, small farm assistance and outreach and adult leadership and community development. Conduct program lessons, reviews and final evaluation. Secure media releases and provide classroom space. Promote participation in Extension Programs. A Memorandum of Agreement was established with the partner entity.	No Change
K-12 Education Institute	Anderson Area YMCA (Upstate Region)	To provide outreach activities to help rural and urban limited-resource clients improve their quality of living in 4-H youth development, family life, small farm assistance and outreach and adult leadership and community development. Conduct program lessons, reviews and final evaluation. Secure media releases and provide classroom space. Promote participation in Extension Programs. A Memorandum of Agreement was established with the partner entity.	No Change
Non-Governmental Organization	Beaufort Boys and Girls Club (Low Country Region)	To provide outreach activities to help rural and urban limited-resource clients improve their quality of living in 4-H youth development, family life, small farm assistance and outreach and adult leadership and community development. Conduct program lessons, reviews and final evaluation. Secure media releases and provide classroom space. Promote participation in Extension Programs. A Memorandum of Agreement was established with the partner entity.	No Change
K-12 Education Institute	Bethune-Bowman Middle School (Midlands Region)	To provide outreach activities to help rural and urban limited-resource clients improve their quality of living in 4-H youth development, family life, small farm assistance and outreach and adult leadership and community development. Conduct program lessons, reviews and final evaluation. Secure media releases and provide classroom space. Promote participation in Extension Programs. A Memorandum of Agreement was established with the partner entity.	No Change
K-12 Education Institute	Branchville Middle School (Midlands Regions)	To provide outreach activities to help rural and urban limited-resource clients improve their quality of living in 4-H youth development, family life, small farm assistance and outreach and adult leadership and community development. Conduct program lessons, reviews and final evaluation. Secure media releases and provide classroom space. Promote participation in Extension Programs. A Memorandum of Agreement was established with the partner entity.	No Change
Non-Governmental Organization	Bright Star Learning (Midlands Region)	To provide outreach activities to help rural and urban limited-resource clients improve their quality of living in 4-H youth development, family life, small farm assistance and outreach and adult leadership and community development. Conduct program lessons, reviews and final evaluation. Secure media releases and provide classroom space. Promote participation in Extension Programs. A Memorandum of Agreement was established with the partner entity.	No Change
K-12 Education Institute	Calhoun Academy of the Arts (Midlands Region)	To provide outreach activities to help rural and urban limited-resource clients improve their quality of living in 4-H youth development, family life, small farm assistance and outreach and adult leadership and community development. Conduct program lessons, reviews and final evaluation. Secure media releases and provide classroom space. Promote participation in Extension Programs. A Memorandum of Agreement was established with the partner entity.	No Change
Non-Governmental Organization	Camp Wildwood (Low Country Region)	To provide outreach activities to help rural and urban limited-resource clients improve their quality of living in 4-H youth development, family life, small farm assistance and outreach and adult leadership and community development. Conduct program lessons, reviews and final evaluation. Secure media releases and provide classroom space. Promote participation in Extension Programs. A Memorandum of Agreement was established with the partner entity.	No Change

Type of Partner Entity	Name of Partner Entity	Description of Partnership	Change to the partnership during the past fiscal year
Non-Governmental Organization	Cannon-Bridge Boys & Girls Club (Midlands Region)	To provide outreach activities to help rural and urban limited-resource clients improve their quality of living in 4-H youth development, family life, small farm assistance and outreach and adult leadership and community development. Conduct program lessons, reviews and final evaluation. Secure media releases and provide classroom space. Promote participation in Extension Programs. A Memorandum of Agreement was established with the partner entity.	No Change
K-12 Education Institute	Carver-Edisto Middle School (Midlands Region)	To provide outreach activities to help rural and urban limited-resource clients improve their quality of living in 4-H youth development, family life, small farm assistance and outreach and adult leadership and community development. Conduct program lessons, reviews and final evaluation. Secure media releases and provide classroom space. Promote participation in Extension Programs. A Memorandum of Agreement was established with the partner entity.	No Change
Non-Governmental Organization	Charity Springs Community Church (Anderson) Upstate Region)	To provide outreach activities to help rural and urban limited-resource clients improve their quality of living in 4-H youth development, family life, small farm assistance and outreach and adult leadership and community development. Conduct program lessons, reviews and final evaluation. Secure media releases and provide classroom space. Promote participation in Extension Programs. A Memorandum of Agreement was established with the partner entity.	No Change
K-12 Education Institute	Charleston County School District (Coastal Region)	To provide outreach activities to help rural and urban limited-resource clients improve their quality of living in 4-H youth development, family life, small farm assistance and outreach and adult leadership and community development. Conduct program lessons, reviews and final evaluation. Secure media releases and provide classroom space. Promote participation in Extension Programs. A Memorandum of Agreement was established with the partner entity.	No Change
K-12 Education Institute	Colleton County Middle School (Low Country Region)	To provide outreach activities to help rural and urban limited-resource clients improve their quality of living in 4-H youth development, family life, small farm assistance and outreach and adult leadership and community development. Conduct program lessons, reviews and final evaluation. Secure media releases and provide classroom space. Promote participation in Extension Programs. A Memorandum of Agreement was established with the partner entity.	No Change
K-12 Education Institute	Colleton County School District Afterschool (Low Country Region)	To provide outreach activities to help rural and urban limited-resource clients improve their quality of living in 4-H youth development, family life, small farm assistance and outreach and adult leadership and community development. Conduct program lessons, reviews and final evaluation. Secure media releases and provide classroom space. Promote participation in Extension Programs. A Memorandum of Agreement was established with the partner entity.	No Change
Non-Governmental Organization	Colleton Parks and Recreation (Low Country Region)	To provide outreach activities to help rural and urban limited-resource clients improve their quality of living in 4-H youth development, family life, small farm assistance and outreach and adult leadership and community development. Conduct program lessons, reviews and final evaluation. Secure media releases and provide classroom space. Promote participation in Extension Programs. A Memorandum of Agreement was established with the partner entity.	No Change
Non-Governmental Organization	Colleton Sports Group (Low Country Region)	To provide outreach activities to help rural and urban limited-resource clients improve their quality of living in 4-H youth development, family life, small farm assistance and outreach and adult leadership and community development. Conduct program lessons, reviews and final evaluation. Secure media releases and provide classroom space. Promote participation in Extension Programs. A Memorandum of Agreement was established with the partner entity.	No Change
Non-Governmental Organization	Concord Baptist Church (Anderson) (Upstate Region)	To provide outreach activities to help rural and urban limited-resource clients improve their quality of living in 4-H youth development, family life, small farm assistance and outreach and adult leadership and community development. Conduct program lessons, reviews and final evaluation. Secure media releases and provide classroom space. Promote participation in Extension Programs. A Memorandum of Agreement was established with the partner entity.	No Change

Type of Partner Entity	Name of Partner Entity	Description of Partnership	Change to the partnership during the past fiscal year
State Government	Dale Apartment Complex (Low Country Region)	To provide outreach activities to help rural and urban limited-resource clients improve their quality of living in 4-H youth development, family life, small farm assistance and outreach and adult leadership and community development. Conduct program lessons, reviews and final evaluation. Secure media releases and provide classroom space. Promote participation in Extension Programs. A Memorandum of Agreement was established with the partner entity.	No Change
Non-Governmental Organization	Distinctive Learning (Midlands Regions)	To provide outreach activities to help rural and urban limited-resource clients improve their quality of living in 4-H youth development, family life, small farm assistance and outreach and adult leadership and community development. Conduct program lessons, reviews and final evaluation. Secure media releases and provide classroom space. Promote participation in Extension Programs. A Memorandum of Agreement was established with the partner entity.	No Change
K-12 Education Institute	Edisto High School (Midlands Region)	To provide outreach activities to help rural and urban limited-resource clients improve their quality of living in 4-H youth development, family life, small farm assistance and outreach and adult leadership and community development. Conduct program lessons, reviews and final evaluation. Secure media releases and provide classroom space. Promote participation in Extension Programs. A Memorandum of Agreement was established with the partner entity.	No Change
K-12 Education Institute	Estill High School (Low Country Region)	To provide outreach activities to help rural and urban limited-resource clients improve their quality of living in 4-H youth development, family life, small farm assistance and outreach and adult leadership and community development. Conduct program lessons, reviews and final evaluation. Secure media releases and provide classroom space. Promote participation in Extension Programs. A Memorandum of Agreement was established with the partner entity.	No Change
K-12 Education Institute	Fairfax Elementary School (Low Country Region)	To provide outreach activities to help rural and urban limited-resource clients improve their quality of living in 4-H youth development, family life, small farm assistance and outreach and adult leadership and community development. Conduct program lessons, reviews and final evaluation. Secure media releases and provide classroom space. Promote participation in Extension Programs. A Memorandum of Agreement was established with the partner entity.	No Change
K-12 Education Institute	Felton Laboratory School (Midlands Region)	To provide outreach activities to help rural and urban limited-resource clients improve their quality of living in 4-H youth development, family life, small farm assistance and outreach and adult leadership and community development. Conduct program lessons, reviews and final evaluation. Secure media releases and provide classroom space. Promote participation in Extension Programs. A Memorandum of Agreement was established with the partner entity.	No Change
Non-Governmental Organization	Fruits of the Spirit (Upstate Region)	To provide outreach activities to help rural and urban limited-resource clients improve their quality of living in 4-H youth development, family life, small farm assistance and outreach and adult leadership and community development. Conduct program lessons, reviews and final evaluation. Secure media releases and provide classroom space. Promote participation in Extension Programs. A Memorandum of Agreement was established with the partner entity.	No Change
K-12 Education Institute	Glenview Middle School (Upstate Region)	To provide outreach activities to help rural and urban limited-resource clients improve their quality of living in 4-H youth development, family life, small farm assistance and outreach and adult leadership and community development. Conduct program lessons, reviews and final evaluation. Secure media releases and provide classroom space. Promote participation in Extension Programs. A Memorandum of Agreement was established with the partner entity.	No Change
K-12 Education Institute	GREAT Ballers Summer Camp/Colleton School District (Low Country Region)	To provide outreach activities to help rural and urban limited-resource clients improve their quality of living in 4-H youth development, family life, small farm assistance and outreach and adult leadership and community development. Conduct program lessons, reviews and final evaluation. Secure media releases and provide classroom space. Promote participation in Extension Programs. A Memorandum of Agreement was established with the partner entity.	No Change

Type of Partner Entity	Name of Partner Entity	Description of Partnership	Change to the partnership during the past fiscal year
K-12 Education Institute	Hampton Boys Club Summer Camp (Low Country Region)	To provide outreach activities to help rural and urban limited-resource clients improve their quality of living in 4-H youth development, family life, small farm assistance and outreach and adult leadership and community development. Conduct program lessons, reviews and final evaluation. Secure media releases and provide classroom space. Promote participation in Extension Programs. A Memorandum of Agreement was established with the partner entity.	No Change
K-12 Education Institute	Hardeeville Elementary School (Low Country Region)	To provide outreach activities to help rural and urban limited-resource clients improve their quality of living in 4-H youth development, family life, small farm assistance and outreach and adult leadership and community development. Conduct program lessons, reviews and final evaluation. Secure media releases and provide classroom space. Promote participation in Extension Programs. A Memorandum of Agreement was established with the partner entity.	No Change
K-12 Education Institute	Hardeeville Middle School (Low Country Region)	To provide outreach activities to help rural and urban limited-resource clients improve their quality of living in 4-H youth development, family life, small farm assistance and outreach and adult leadership and community development. Conduct program lessons, reviews and final evaluation. Secure media releases and provide classroom space. Promote participation in Extension Programs. A Memorandum of Agreement was established with the partner entity.	No Change
K-12 Education Institute	Hardeeville-Ridgeland Middle School (Low Country Region)	To provide outreach activities to help rural and urban limited-resource clients improve their quality of living in 4-H youth development, family life, small farm assistance and outreach and adult leadership and community development. Conduct program lessons, reviews and final evaluation. Secure media releases and provide classroom space. Promote participation in Extension Programs. A Memorandum of Agreement was established with the partner entity.	No Change
K-12 Education Institute	Hendersonville Elementary School (Low Country Region)	To provide outreach activities to help rural and urban limited-resource clients improve their quality of living in 4-H youth development, family life, small farm assistance and outreach and adult leadership and community development. Conduct program lessons, reviews and final evaluation. Secure media releases and provide classroom space. Promote participation in Extension Programs. A Memorandum of Agreement was established with the partner entity.	No Change
K-12 Education Institute	Holly Hill Roberts Middle (Midlands Region)	To provide outreach activities to help rural and urban limited-resource clients improve their quality of living in 4-H youth development, family life, small farm assistance and outreach and adult leadership and community development. Conduct program lessons, reviews and final evaluation. Secure media releases and provide classroom space. Promote participation in Extension Programs. A Memorandum of Agreement was established with the partner entity.	No Change
K-12 Education Institute	Hunter-Kinard Tyler School (Midlands Region)	To provide outreach activities to help rural and urban limited-resource clients improve their quality of living in 4-H youth development, family life, small farm assistance and outreach and adult leadership and community development. Conduct program lessons, reviews and final evaluation. Secure media releases and provide classroom space. Promote participation in Extension Programs. A Memorandum of Agreement was established with the partner entity.	No Change
Non-Governmental Organization	Masters Keys (Midlands Region)	To provide outreach activities to help rural and urban limited-resource clients improve their quality of living in 4-H youth development, family life, small farm assistance and outreach and adult leadership and community development. Conduct program lessons, reviews and final evaluation. Secure media releases and provide classroom space. Promote participation in Extension Programs. A Memorandum of Agreement was established with the partner entity.	No Change
K-12 Education Institute	Men of Distinction Colleton High School (Low Country Region)	To provide outreach activities to help rural and urban limited-resource clients improve their quality of living in 4-H youth development, family life, small farm assistance and outreach and adult leadership and community development. Conduct program lessons, reviews and final evaluation. Secure media releases and provide classroom space. Promote participation in Extension Programs. A Memorandum of Agreement was established with the partner entity.	No Change
Non-Governmental Organization	Mount Pleasant Community Center (Coastal Region)	To provide outreach activities to help rural and urban limited-resource clients improve their quality of living in 4-H youth development, family life, small farm assistance and outreach and adult leadership and community development. Conduct program lessons, reviews and final evaluation. Secure media releases and provide classroom space. Promote participation in Extension Programs. A Memorandum of Agreement was established with the partner entity.	No Change
Non-Governmental Organization	Mountainview Baptist Church (Upstate Region)	To provide outreach activities to help rural and urban limited-resource clients improve their quality of living in 4-H youth development, family life, small farm assistance and outreach and adult leadership and community development. Conduct program lessons, reviews and final evaluation. Secure media releases and provide classroom space. Promote participation in Extension Programs. A Memorandum of Agreement was established with the partner entity.	No Change

Type of Partner Entity	Name of Partner Entity	Description of Partnership	Change to the partnership during the past fiscal year
K-12 Education Institute	New Destiny Center (Low Country Region)	To provide outreach activities to help rural and urban limited-resource clients improve their quality of living in 4-H youth development, family life, small farm assistance and outreach and adult leadership and community development. Conduct program lessons, reviews and final evaluation. Secure media releases and provide classroom space. Promote participation in Extension Programs. A Memorandum of Agreement was established with the partner entity.	No Change
Non-Governmental Organization	New Foundations Home for Children (Upstate Region)	To provide outreach activities to help rural and urban limited-resource clients improve their quality of living in 4-H youth development, family life, small farm assistance and outreach and adult leadership and community development. Conduct program lessons, reviews and final evaluation. Secure media releases and provide classroom space. Promote participation in Extension Programs. A Memorandum of Agreement was established with the partner entity.	No Change
Non-Governmental Organization	Nicholtown Community Center - Greenville (Upstate Region)	To provide outreach activities to help rural and urban limited-resource clients improve their quality of living in 4-H youth development, family life, small farm assistance and outreach and adult leadership and community development. Conduct program lessons, reviews and final evaluation. Secure media releases and provide classroom space. Promote participation in Extension Programs. A Memorandum of Agreement was established with the partner entity.	No Change
K-12 Education Institute	North District Middle School (Midlands Region)	To provide outreach activities to help rural and urban limited-resource clients improve their quality of living in 4-H youth development, family life, small farm assistance and outreach and adult leadership and community development. Conduct program lessons, reviews and final evaluation. Secure media releases and provide classroom space. Promote participation in Extension Programs. A Memorandum of Agreement was established with the partner entity.	No Change
K-12 Education Institute	Northside Elementary School (Low Country Region)	To provide outreach activities to help rural and urban limited-resource clients improve their quality of living in 4-H youth development, family life, small farm assistance and outreach and adult leadership and community development. Conduct program lessons, reviews and final evaluation. Secure media releases and provide classroom space. Promote participation in Extension Programs. A Memorandum of Agreement was established with the partner entity.	No Change
Non-Governmental Organization	Orangeburg Area Development Center (Midlands Region)	To provide outreach activities to help rural and urban limited-resource clients improve their quality of living in 4-H youth development, family life, small farm assistance and outreach and adult leadership and community development. Conduct program lessons, reviews and final evaluation. Secure media releases and provide classroom space. Promote participation in Extension Programs. A Memorandum of Agreement was established with the partner entity.	No Change
Non-Governmental Organization	Renewed Faith Summer Camp (Low Country Region)	To provide outreach activities to help rural and urban limited-resource clients improve their quality of living in 4-H youth development, family life, small farm assistance and outreach and adult leadership and community development. Conduct program lessons, reviews and final evaluation. Secure media releases and provide classroom space. Promote participation in Extension Programs. A Memorandum of Agreement was established with the partner entity.	No Change
Non-Governmental Organization	Salvation Army Boys & Girls Club - Anderson (Upstate Region)	To provide outreach activities to help rural and urban limited-resource clients improve their quality of living in 4-H youth development, family life, small farm assistance and outreach and adult leadership and community development. Conduct program lessons, reviews and final evaluation. Secure media releases and provide classroom space. Promote participation in Extension Programs. A Memorandum of Agreement was established with the partner entity.	No Change
K-12 Education Institute	Southwood Academy of the Arts Middle School (Upstate Region)	To provide outreach activities to help rural and urban limited-resource clients improve their quality of living in 4-H youth development, family life, small farm assistance and outreach and adult leadership and community development. Conduct program lessons, reviews and final evaluation. Secure media releases and provide classroom space. Promote participation in Extension Programs. A Memorandum of Agreement was established with the partner entity.	No Change
Non-Governmental Organization	Westside Community Center (Upstate Region)	To provide outreach activities to help rural and urban limited-resource clients improve their quality of living in 4-H youth development, family life, small farm assistance and outreach and adult leadership and community development. Conduct program lessons, reviews and final evaluation. Secure media releases and provide classroom space. Promote participation in Extension Programs. A Memorandum of Agreement was established with the partner entity.	No Change
K-12 Education Institute	Young Men of Hope Club (Low Country Region)	To provide outreach activities to help rural and urban limited-resource clients improve their quality of living in 4-H youth development, family life, small farm assistance and outreach and adult leadership and community development. Conduct program lessons, reviews and final evaluation. Secure media releases and provide classroom space. Promote participation in Extension Programs. A Memorandum of Agreement was established with the partner entity.	No Change

Type of Partner Entity	Name of Partner Entity	Description of Partnership	Change to the partnership during the past fiscal year
Non-Governmental Organization	Youth Generation Matters (Low Country Region)	To provide outreach activities to help rural and urban limited-resource clients improve their quality of living in 4-H youth development, family life, small farm assistance and outreach and adult leadership and community development. Conduct program lessons, reviews and final evaluation. Secure media releases and provide classroom space. Promote participation in Extension Programs. A Memorandum of Agreement was established with the partner entity.	No Change
K-12 Education Institute	Carvers Bay Middle Middle School	To provide outreach activities to help rural and urban limited-resource clients improve their quality of living in 4-H youth development, family life, small farm assistance and outreach and adult leadership and community development. Conduct program lessons, reviews and final evaluation. Secure media releases and provide classroom space. Promote participation in Extension Programs. A Memorandum of Agreement was established with the partner entity.	No Change
K-12 Education Institute	Greeleyville Elementary School	To provide outreach activities to help rural and urban limited-resource clients improve their quality of living in 4-H youth development, family life, small farm assistance and outreach and adult leadership and community development. Conduct program lessons, reviews and final evaluation. Secure media releases and provide classroom space. Promote participation in Extension Programs. A Memorandum of Agreement was established with the partner entity.	No Change
K-12 Education Institute	Kenneth Gardner Elementary School	To provide outreach activities to help rural and urban limited-resource clients improve their quality of living in 4-H youth development, family life, small farm assistance and outreach and adult leadership and community development. Conduct program lessons, reviews and final evaluation. Secure media releases and provide classroom space. Promote participation in Extension Programs. A Memorandum of Agreement was established with the partner entity.	No Change
K-12 Education Institute	Scott's Branch Middle/High School	To provide outreach activities to help rural and urban limited-resource clients improve their quality of living in 4-H youth development, family life, small farm assistance and outreach and adult leadership and community development. Conduct program lessons, reviews and final evaluation. Secure media releases and provide classroom space. Promote participation in Extension Programs. A Memorandum of Agreement was established with the partner entity.	No Change
Non-Government Organization	Shiloh Project LIFT	To provide after-school programs to limited-resource participants to improve their quality of life. A Memorandum of Agreement was established with the partner entity.	No Change
Local Government	Town of Lane	To provide outreach programs to patients in the community. A Memorandum of Agreement was established with the partner entity.	No Change
Local Government	City of Florence Recreation Services	To serve limited resource students with STREAM activity education within the city and surrounding areas. Promote participation in Extension Programs. A Memorandum of Agreement was established with the partner entity.	No Change
Non-Government Organization	Avery C. Thompson Community Center	To provide leadership and coordinate after-school and summer activities with a focus on technology and leadership to the community. A Memorandum of Agreement was established with the partner entity.	No Change

2023

Reports Data

as submitted for the Accountability Report by:

P210 - SC State University

Report Name	Law Number (if applicable)	Summary of information requested in the report	Date of most recent submission DURING the past fiscal year	Reporting Frequency	Type of entity/entities	Method to access the report	Direct access hyperlink or agency contact (if not provided to LSA for posting online)	Changes to this report during the past fiscal year	Explanation why a report wasn't submitted
1890 Scholarship Program	P. L. 115-34	Defines the progress made during the year with the program participants and their accomplishments.	May-23	Annually	Entity within federal government	Electronic copy available upon request	Maroharan.muthusamy@usda.gov	No Change	
Agricultural Research at 1890 Land-Grant Institutions		Supports continuing agriculture research at colleges eligible to receive funds under the Act of August 30, 1890. Conduct research, printing, disseminate results, contribute to retirement, purchase and rental of land and construction, acquisitions, repairs, etc. of buildings.	September-21	Annually	Entity within federal government	Available on another website	http://www.nifa.usda.gov/program/agricultural-research-1890-land-grant-institutions	No Change	
Budget Plan		Identifying information relating to the upcoming fiscal year budget request process.	September-22	Annually	South Carolina state agency or agencies	Electronic file available upon request	Kevin.etheridge@admin.sc.gov	No Change	
EFNEP Final Budget 2021		Identifies the funding spent during the listed year.	October-22	Annually	Entity within federal government	Electronic copy available upon request	Electronic copy available upon request	No Change	
EFNEP Preliminary Budget 2022		Identifies the funding to be spent in the upcoming year.	February-23	Annually	Entity within federal government	Electronic copy available upon request	Electronic copy available upon request	No Change	
ES 237 Report (4-H)		A workbook of 5 spreadsheets designed to complete the State 4-H enrollment data.	January-23	Annually	Entity within federal government	Electronic copy available upon request	pardern@clermson.edu	No Change	
Expanded Food and Nutrition Education Program (EFNEP)		Carrying out a program of extension activities designed to employ and train professional and paraprofessional aides to engage in direct nutrition education of low-income families and in other appropriate nutrition education programs.	September-22	Annually	Entity within federal government	Available on another website	www.nifa.usda.gov/efnep	No Change	
Plan of Work (POW) Annual Combined Research and Extension Accomplishments and Results Report		A tool used for data collection, including the Annual Report of Accomplishments. A vehicle for Land Grant Universities to report accomplishments of Agriculture Research and Extension programs and results.	May-23	Annually	Entity within federal government	Available on another website	www.nifa.usda.gov/tool/pow	No Change	
Plan of Work (POW) Annual Report Plan		A five year tool used to plan programs and activities. A vehicle for Land Grant Universities to report plans of Agriculture Research and Extension programs.	June-23	Annually	Entity within federal government	Available on another website	www.nifa.usda.gov/tool/pow	No Change	
REEReport (AD-419 Research Funds and Staff Support)		Documents the performance plans of the 1890 Program for continuous improvement and quality of service. It is linked to the University's mission, goals and objectives. The information provides for efficiency and effectiveness of the strategic plan.	January-23	Annually	Entity within federal government	Available on agency's website	http://www.scsu.edu	No Change	

Report Name	Law Number (if applicable)	Summary of information requested in the report	Date of most recent submission DURING the past fiscal year	Reporting Frequency	Type of entity/entities	Method to access the report	Direct access hyperlink or agency contact (if not provided to LSA for posting online)	Changes to this report during the past fiscal year	Explanation why a report wasn't submitted
Renewable Resources Extension Act (RREA)		Data collected to develop plans of work and report program accomplishments and impacts.	February-23	Annually	Entity within federal government	Available on agency's website	https://nifa.usda.gov/program/renewable-resources-extension-act-capacity-grant	No Change	
Request for Applications (RFA)		An electronically submitted document giving notice to submit applications for program funding.	June-23	Annually	Entity within federal government	Available on another website	www.grants.gov	No Change	
RREA: Popular Report		A one-page document used as support for collecting and compiling data for submission to legislators.	December-22	Annually	Entity within federal government	Available on agency's website	https://nifa.usda.gov/program/renewable-resources-extension-act-capacity-grant	No Change	
RREA: Progress Report		Communicates program effectiveness to its funders, stakeholders and other clients.	August-22	Annually	Entity within federal government	Available on agency's website	https://nifa.usda.gov/program/renewable-resources-extension-act-capacity-grant	No Change	
SC State PSA Accountability Report		Identifies an agency's goals, mission, objectives and measuring performance of the objectives. Also, link the expenditures to the program areas.	September-23	Annually	South Carolina state agency or agencies	Available on another website	AAR@admin.sc.gov	No Change	
SC State University Assessment Plan Report		Establishes the agency's budget request for the Governor	June-23	Annually	South Carolina state agency or agencies	Available on another website	www.admin.sc.gov/budget/agency-budget-plans	No Change	
SC State University Assessment Report		Documents the actual work performance of the 1890 Program for the fiscal year. Identifying the strategies and results for the year	June-23	Annually	South Carolina state agency or agencies	Available on agency's website	http://www.sc.edu	No Change	
WebNEERS Year End Data Expanded Food and Nutrition Education Program (EFNEP)		An end of the fiscal year report of the accomplishments to low-income youth and families dealing with food and nutrition and physical activities.	November-22	Annually	Entity within federal government	Electronic copy available upon request	EFNEP-admin@webneers.net	No Change	

AGENCY NAME:	South Carolina State PSA		
AGENCY CODE:	P210	SECTION:	046

**2023
Accountability Report**

SUBMISSION FORM

I have reviewed and approved the data submitted by the agency in the following templates:

- Data Template
 - Reorganization and Compliance
 - FY2023 Strategic Plan Results
 - FY2024 Strategic Plan Development
 - Legal
 - Services
 - Partnerships
 - Report or Review
 - Budget
- Discussion Template
- Organizational Template

I have reviewed and approved the financial report summarizing the agency’s budget and actual expenditures, as entered by the agency into the South Carolina Enterprise Information System.

The information submitted is complete and accurate to the extent of my knowledge.

AGENCY DIRECTOR <i>(SIGN AND DATE):</i>	SIGNATURE ON FILE	Signature Received: 9/14/2023 4:37 PM
<i>(TYPE/PRINT NAME):</i>	Dr. Louis Whitesides	

BOARD/CMSN CHAIR <i>(SIGN AND DATE):</i>	N/A	
<i>(TYPE/PRINT NAME):</i>		